



Cell therapy

CultiMaxx Shelving Systems for G-Rex bioreactors

Shelving systems for Heracell VIOS 250i CO₂ Incubators and Heracell Vios 250i CR CO₂ Incubators CTS Series

Life-changing cell therapies can't wait. With a focus on increasing production yield for cell therapies, we redesigned the interior components for our popular Thermo Scientific™ Heracell™ VIOS™ 250i CO₂ Incubator and Thermo Scientific™ Heracell™ Vios™ 250i CR CO₂ Incubator CTS™ Series. The result is the Thermo Scientific™ CultiMaxx™ Shelving System optimized to incubate up to 150% more Wilson Wolf G-Rex® 500M-CS bioreactors in the same footprint.¹

With the standard incubator interior configuration, the VIOS 250i/ Vios 250i CR CO₂ incubators (255 L/9.0 cu.ft.) could accommodate up to four G-Rex® 500M-CS units. The CultiMaxx shelving system for G-Rex® 500M-CS increases usable space in the incubator chamber to accommodate up to ten G-Rex® 500M-CS bioreactors simultaneously.

The CultiMaxx shelving system is also suitable for G-Rex® bioreactors in other sizes, e.g. G-Rex® 100M-CS and G-Rex® 10M-CS.



Features:

- 1 Holds up to 10x G-Rex® 500M-CS
- 2 Increases production per footprint
- 3 Stainless steel reinforced shelves
- 4 Retrofittable in the field
- 5 Available as accessory

¹ Compared to the standard shelving system provided with every Heracell VIOS 250i and Heracell Vios CR 250i CO₂ Incubator.

Optimize your incubator space

Increase VIOS/Vios CR incubator capacity by up to 150%¹

Standard system: 4x G-Rex[®] 500M-CS bioreactors

CultiMaxx system: 10x G-Rex[®] 500M-CS bioreactors

BEFORE



AFTER



150% more capacity

When the G-Rex[®] shelving is used in a stack of two VIOS 250i/ Vios 250i CR CO₂ incubators, the number of G-Rex[®] 500M-CS bioreactors per footprint increases from eight to twenty.



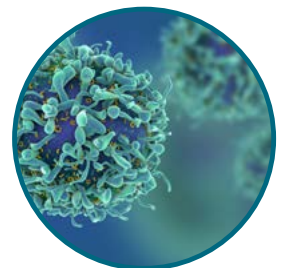
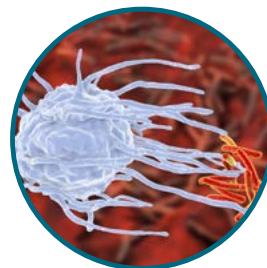
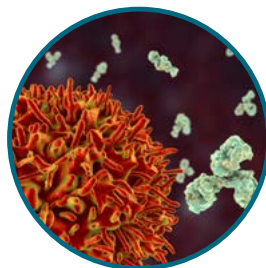
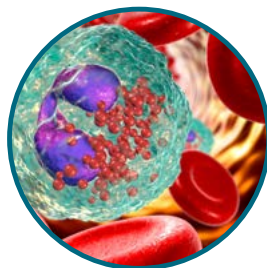
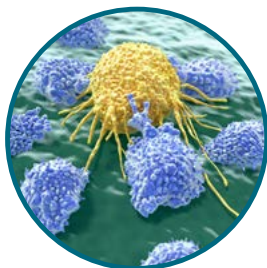
Redesigned for greater load bearing

CultiMaxx shelving system is an innovative design featuring reinforced stainless steel shelving which provides a maximum weight capacity of 65 kg/144 lbs.



Space efficient

More production capacity and culture throughput in the footprint of a single CO₂ incubator.



¹ Compared to the standard shelving system provided with every Heracell VIOS 250i and Heracell Vios CR 250i CO₂ Incubator.

Wilson Wolf G-Rex bioreactors

Production of suspension cells

Wilson Wolf G-Rex® bioreactors

G-Rex® bioreactors were designed by Wilson Wolf Corporation for predictable, efficient, and scalable cell expansion. They enable parallel patient processing and can produce the large numbers of cells needed for cell-based therapeutics, from preclinical through commercial scale manufacturing. By giving cells unlimited and undisturbed access to nutrients and oxygen, G-Rex® bioreactors help eliminate media exchanges and the complex and expensive hardware required in integrated systems which can make them an ideal cell therapy production platform for immune cells such as T cells, natural killer cells, and hematopoietic cells.



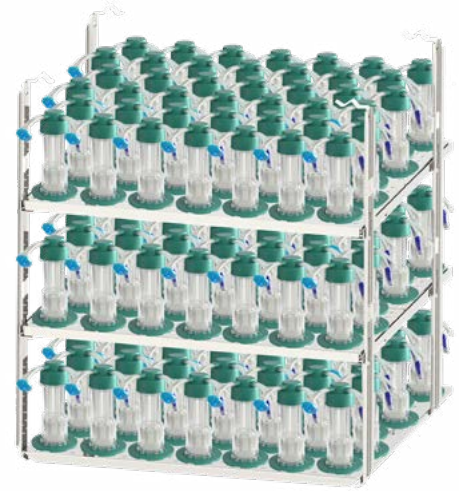
Learn more at scaleready.com/g-rex



For up to 10x G-Rex 500M-CS



For up to 45x G-Rex 100M-CS



For up to 123x G-Rex 10M-CS

G-Rex® 500M-CS (closed system)

500 cm² gas permeable membrane surface area with 5000 mL media capacity. Expand 250 million cells into between 10 to 20 billion cells in about 10 days with NO medium exchange.

- Sterile Fluid Path – P/N G285500-CS [Validated Sterile Fluid Path]

G-Rex® 100M-CS (closed system)

100 cm² gas permeable membrane surface area with 1000 mL media capacity. Expand 50 million cells into between 2 to 4 billion cells in about 10 days with NO medium exchange.

- Sterile Fluid Path – P/N 81100-CS [Validated Sterile Fluid Path]

G-Rex® 10M-CS (closed system)

10 cm² gas permeable membrane surface with 100 mL media capacity. Expand 5 million cells into between 200 to 400 million cells in about 10 days with NO medium exchange.

- Sterile Fluid Path – P/N 80110-CS [Validated Sterile Fluid Path]

Ordering information

CultiMaxx system for G-Rex bioreactors

Specifications

Description		Maximum number of G-Rex® bioreactors*	Maximum weight capacity
Shelving for G-Rex® 500M-CS bioreactors		10	65 kg/ 144 lbs
500M-CS	Top level	4	26 kg/ 57.4 lbs
	Mid level	4	26 kg/ 57.4 lbs
	Bottom level	2	13 kg/ 28.7 lbs
Shelving for G-Rex® 100M-CS bioreactors		45	65 kg/ 144 lbs
100M-CS	Top level	18	26 kg/ 57.4 lbs
	Mid level	18	26 kg/ 57.4 lbs
	Bottom level	9	13 kg/ 28.7 lbs
Shelving for G-Rex® 10M-CS bioreactors		123	65 kg/ 144 lbs
10M-CS	Top level	42	26 kg/ 57.4 lbs
	Mid level	42	26 kg/ 57.4 lbs
	Bottom level	39	13 kg/ 28.7 lbs

* Maximum amount of bioreactors is determined by available space and maximum weight with filled vessels

Ordering information

Description	Cat. No.
Shelving System optimized for G-Rex® 500M-CS*	
CultiMaxx Shelving System to support up to 10 G-Rex 500M-CS bioreactors for Heracell VIOS 250i (CR), Forma Steri-Cycle i250 (CR) CO ₂ incubator	50164781

* Only the shelving system, customer-installation (no technician needed). G-Rex® bioreactors must be ordered from Wilson Wolf Corporation.



Learn more at thermofisher.com/co2

thermo scientific