

thermo scientific

Choosing the best vacuum  
concentrator for your laboratory

**ThermoFisher**  
SCIENTIFIC

# One-click Evaporation

**For more than 50 years, scientists around the world have been using Thermo Scientific™ Savant™ SpeedVac™ Vacuum Concentrators to remove solvents from their samples.**

SpeedVac systems use state-of-the-art centrifugation, vacuum, and heat technologies for removing solvents and concentrating samples while maintaining sample integrity.

A diverse product range provides solutions for a wide variety of solvent applications ranging from the traditional drying down of DNA preparations in water and methanol, to the more complex and aggressive applications presented by the combinatorial chemistry and drug discovery sectors of the pharmaceutical industry.

To make the operation of a SpeedVac system easier than ever, we now offer pre-programmed and customizable protocols. All eight Savant SpeedVac Vacuum Concentrators, come with at least three presets, and up to eight, customizable programs to aid in drying solvents for your application.

Savant SpeedVac systems are designed to help provide quick, simple evaporation resulting in viable samples time after time.



# Savant SpeedVac System selection guide

Selecting the correct vacuum concentrator system is critical for optimum performance and reliability. Savant SpeedVac Kits come in two formats:

- Modular kits allow you to choose the vacuum concentrator, trap, rotor, and pump components that are best for your application and can be easily swapped out for solvent compatibility
- Integrated kits are complete systems, containing the vacuum concentrator, trap, rotor and pump, fully ready to install and run upon arrival

Use the charts below to select the right system for your application. Email [speedvac@thermofisher.com](mailto:speedvac@thermofisher.com) for any ordering questions or to discuss a customized system to suit your needs.

## Small and medium capacity vacuum concentrator kits by model

Applications	DNA130	SPD1030P1 "Op" With ANT100 & ANS121	SPD120P1	SPD120P2	SPD1030 "Integrated"	SPD130P1	SPD140P1	SPD140P2
Maximum number of 1.5 mL tubes vacuum concentrator holds	36	120	120	120	120	120	120	120
<b>DNA/RNA</b> ethanol, H <sub>2</sub> O, buffers	●	●	●	●	●	●	●	●
<b>DNA/RNA</b> Ammonium hydroxide (oligos)		●	●	●	●	●	●	●
<b>DNA/RNA</b> DNA in acetonitrile or H <sub>2</sub> O		●	●	●	●	●	●	●
<b>Proteins, enzymes, HPLC fractions</b> H <sub>2</sub> O, acetonitrile, methanol, ethanol + 0.1% TFA			●	●	●	●	●	●
<b>Low boiling-point solvents (Aggressive)</b> <b>Organic chemistry, drug discovery</b> Chloroform, ethyl acetate, acetone, methylene chloride, hexane						●	●	●
<b>High boiling point solvents (Aggressive)</b> <b>Organic chemistry, drug discovery</b> DMSO, DMF, toluene, nitrobenzene, pyridine							●	●
<b>Strong acids and bases</b> <b>Organic chemistry, drug discovery</b> TFA, HCL, acetic acid, formic acid, sodium hydroxide							●	●



## Large capacity vacuum concentrator kits by model

Applications	SPD1030	SPD2030P1 "OP" with ANT100 & ANS121	SPD210P1	SPD210P2	SPD2030 "Integrated"	SPD300P2	SPD300P1
Number of 1.5 mL tubes vacuum concentrator holds	120	200	200	200	200	200	200
<b>DNA/RNA</b> ethanol, H <sub>2</sub> O, buffers	●	●	●	●	●	●	●
<b>DNA/RNA</b> Ammonium hydroxide (oligos)		●	●	●	●	●	●
<b>DNA/RNA</b> DNA in acetonitrile or H <sub>2</sub> O		●	●	●	●	●	●
<b>Proteins, Enzymes, HPLC Fractions</b> H <sub>2</sub> O, acetonitrile, methanol, ethanol + 0.1% TFA			●	●	●	●	●
<b>Low boiling-point solvents (Aggressive)</b> <b>Organic chemistry, drug discovery</b> Chloroform, ethyl acetate, acetone, methylene chloride, hexane						●	●
<b>High boiling point solvents (Aggressive)</b> <b>Organic chemistry, drug discovery</b> Toluene, nitrobenzene, pyridine						●	
<b>High boiling point solvents (Aggressive)</b> <b>Organic chemistry, drug discovery</b> DMSO, DMF, toluene, nitrobenzene, pyridine							●
<b>Strong acids and bases</b> <b>Organic chemistry, drug discovery</b> TFA, HCL, acetic acid, formic acid, sodium hydroxide						●	●



## Support sample preparation with ease and efficiency

Compact and integrated vacuum concentrator for sample safety and reproducible results



Designed for DNA and RNA applications, the compact and integrated Thermo Scientific™ Savant™ SpeedVac™ DNA130 vacuum concentrator supports the rapid and safe concentration and drying-down of samples, including nucleic acids, PCR preps, and synthetic oligos.

Support your low-volume sample preparation needs with the easy-to-use Savant SpeedVac DNA130 concentrator. Use one of three user-defined programs for efficiency of operation.

### Solvents

- Ethanol
- H<sub>2</sub>O
- Buffers

### Benefits

- **Proven reliability**

With over 50 years of high-quality vacuum concentrators, you can feel confident the Savant SpeedVac family of products will help deliver the reproducible results you depend on.

- **Compact, easy to use design**

- Only 29 cm (11.5 in) wide – freeing up valuable bench space.
- Create and save up to three user-defined methods for faster operation.

- **Safety assurance**

- External post trap neutralizes ammonium hydroxide vapors.
- For concentrating radioactive samples, an optional radioactive chemical trap kit can be used to minimize concerns in handling hazardous fumes and chemicals.
- Lid lock illuminates when lid is closed and locked.

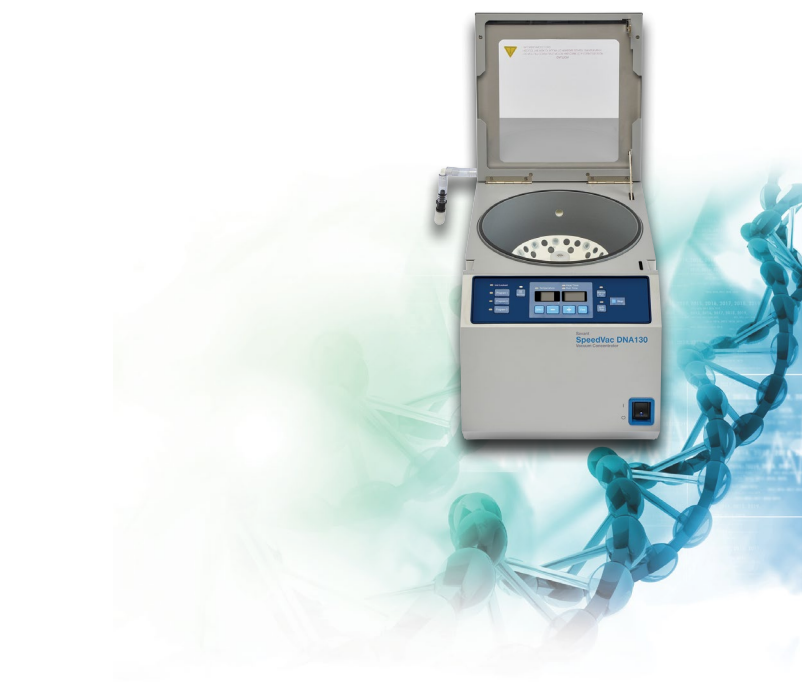
- **Sample integrity**

- DNA/RNA samples require careful handling during the denaturing process. Dry at ambient temperatures or at very low heat to ensure maximum sample protection.
- Data integrity and transfer ability to download data from a USB port.

Product specifications	
Physical properties	
Dimensions (WxDxH)	11.5 x 25 x 12 in / 29 x 64 x 31 cm
Additional required ventilation space	3 in / 8 cm on all sides
Shipping dimensions	
Boxed (WxDxH)	20 x 32 x 19 in / 66 x 81 x 61 cm
Product weight	39 kg / 86 lbs
Shipping weight (boxed)	48 kg / 105 lbs
Materials of construction	
Chamber	Teflon coated aluminum
Chamber seal	Silicone rubber
Pump heads	2-headed pump with ETFE diaphragms
Cover	Transparent acrylic lid with safety lock
Operational requirements	
Voltage input/frequency/power	
DNA130-115	115V AC / 60 Hz, 10 A
DNA130-230	230 VAC / 50 Hz, 6 A
Plug configuration	
DNA130-115	NEMA 5-15P
DNA130-230	SCHUKO CEE 7-7
Typical rotor spin speed	50Hz 1300 RPM (Max) 60Hz 1600 RPM (Max)
Motor	Maintenance-free induction motor
Performance properties	
Noise	<65 dBA
Vacuum pump	ETFE oil-free diaphragm pump
Capacity	36 L/min at 60 Hz, 30 L/min at 50 Hz
Vacuum control (ultimate vacuum level)	<10 Torr (13 mbar, 1.3 kPa)
Temperature range	Ambient* to 65°C
Display/user interface	
Programs	3 selectable programs by application Can be modified and stored Auto and manual run selector
Control panel	LED read out of temperature, run time, and heat time
Temperature set point	Ambient, 35-65°C in 5°C increments
Timer range (heat and run)	1 minute to 9 hours and 59 minutes, continuous
Modes of operation	Auto, Manual, and Pre-heat temperature
Compliance	
Certifications	UL listed to U.S. and Canadian requirements. CE marked.

Ordering information			
Cat. No.	Description		
DNA130-115	DNA SpeedVac system, 115 VAC 60 Hz. Includes one RD36 rotor		
DNA130-230	DNA SpeedVac system, 230 VAC 50 Hz. Includes one RD36 rotor		
Rotor accessories			
	Rotor Part No.	Working Volume	No. of Tubes
Micro Centrifuge Tubes	RD24	1.5 - 2.0 mL	24
	RD36*	1.5 - 2.0 mL	36
	RD48	0.5 mL	48
	RD72	0.5 mL	72
Microplate	RD2MP	Multi-well Shallow-well	2
*included with the DNA130-115 and DNA130-230 SpeedVac Systems			
Other accessories			
SCT120	Chemical trap (order cartridges separately)		
DTK120R	Chemical trap kit for radioactivity		
DC120A	Disposable cartridge for neutralizing acid		
DC120R	Disposable cartridge for trapping volatile radioactivity		
ANT100	Post-trap assembly used with ANS121 for Oligo Preps		
ANS121	Ammonia-neutralizing solution for Oligo Preps		
CC120/DX	Deluxe convenience cart		

\*Ambient Temperature = 17-32°C



Find out more at [thermofisher.com/speedvac](https://thermofisher.com/speedvac)

**ThermoFisher**  
SCIENTIFIC

This product is intended for General Laboratory Use. It is the customer's responsibility to ensure that the performance of the product is suitable for customers' specific use or application. © 2019-2020 Thermo Fisher Scientific Inc. All rights reserved. All trademarks are the property of Thermo Fisher Scientific and its subsidiaries unless otherwise specified. **DSSPDVCDNA130 0320**

## Two capacities for flexible and streamlined evaporation



Thermo Scientific™ Savant™ SpeedVac™ SPD1030 and SPD2030 Vacuum Concentrators are fully integrated systems that combine a concentrator, refrigerated cold trap, diaphragm pump and a vacuum gauge into a single, compact unit.



### Applications

- DNA/RNA
- Proteomics
- Metabolite research
- Drug and forensics testing
- Environmental sampling

### Industries

- Life Science
- Biotech (molecular biology and protein)
- Academic research
- Pharmaceutical
- Industrial
- Agriculture
- Food

### Convenience and flexibility in two capacity ranges

The Savant SpeedVac SPD1030 System is designed for medium capacity (i.e., 120 x 1.5 mL tubes and other formats) while the Savant SpeedVac SPD2030 System accommodates higher capacity (i.e., 200 x 1.5 mL tubes and other formats). A variety of rotors are available for both systems to support sample formats from micro-centrifuge tubes, vials, and microplates to large-volume flasks. Both systems fit in a standard laboratory fume hood.

## Benefits

- **Proven reliability:** Over 50 years of experience stand behind the Savant SpeedVac family of products. Each unit contains an oil-free PTFE diaphragm vacuum pump, making it virtually maintenance-free.
- **Speed and efficient solvent removal:** Rapid evaporation and efficient solvent removal is enhanced with a radiant cover, while vacuum ramping and pressure controls eliminate sample bumping to maintain sample integrity.
- **Ease of use:** An integrated design and intuitive user interface ensure simplicity and control. The intuitive control panel incorporates a bright display and offers three preset programs and three user-defined programs. An oil-free vacuum source eliminates the need to add or change oil. Includes data integrity and transfer ability to download data from a USB port.
- **Safety assurance:** SpeedVac Systems' standard glass lids are equipped with a soft-close mechanism that locks securely to help ensure safety for both samples and technicians.

Product Specifications	SpeedVac SPD1030 integrated system	SpeedVac SPD2030 integrated system
<b>Physical properties</b>		
<b>Dimensions (WxDxH)</b>	25 x 26 x 16 in / 64 x 66 x 41 cm	31 x 28 x 19 in / 79 x 71 x 49 cm
<b>Required ventilation space</b>	3 in / 8 cm on all sides	3 in / 8 cm on all sides
<b>Shipping dimensions</b>		
<b>Boxed (WxDxH)</b>	33 x 37 x 31 in / 83 x 94 x 79 cm	33 x 37 x 31 in / 83 x 94 x 79 cm
<b>Product weight</b>	69 kg / 139 lbs	93 kg / 205 lbs
<b>Shipping weight (boxed)</b>	90 kg / 198 lbs	118 kg / 260 lbs
<b>Materials of construction</b>		
<b>Type of cover</b>	Radiant glass cover	Radiant glass cover
<b>Chamber</b>	PTFE coated aluminum	PTFE coated aluminum
<b>Chamber seal</b>	BUNA N-70	BUNA N-70
<b>Fittings</b>	Polypropylene	Polypropylene
<b>Vacuum pump</b>	2-headed pump with ETFE diaphragms	2-headed pump with ETFE diaphragms
<b>Vacuum control (ultimate vacuum level)</b>	36 l / 60 Hz, 30 l / 50 Hz <10 Torr (13 mbar, 1.3 kPa)	36 l / 60 Hz, 30 l / 50 Hz <10 Torr (13 mbar, 1.3 kPa)
<b>Operational requirements</b>		
	SPD1030-115: 115 VAC/60 Hz, 12 A	SPD2030-220: 220 VAC/60 Hz, 8 A
	SPD1030-230: 230 VAC/50 Hz, 6 A	SPD2030-230: 230 VAC/50 Hz, 8 A
<b>User interface/display</b>		
<b>Temperature setting</b>	35 - 80 °C in 5 °C increments	35 - 80 °C in 5 °C increments
<b>Two separate timer settings for heat and run</b>	1 minute to 9 hours and 59 minutes, continuous	1 minute to 9 hours and 59 minutes, continuous
<b>Vacuum ramp rate setting</b>	1 to 5	1 to 5
<b>Vacuum level control</b>	30 to 5.1 torr in 0.1 increments (40 to 67 mbr)	30 to 5.1 torr in 0.1 increments (40 to 67 mbr)
<b>Number of preset programs</b>	3	3
<b>Number of user-defined programs</b>	3	3
<b>Lid lock indicator</b>	Yes	Yes
<b>Auto and manual run buttons</b>	Yes	Yes
<b>Radiant lamp on/off button</b>	Yes	Yes
<b>Pre-heat button</b>	Yes	Yes
<b>Compliance</b>		
<b>Certifications</b>	UL listed to U.S. and Canadian requirements. CE marked.	





Small capacity rotors for SpeedVac SPD1030 Vacuum Concentrator				
Tube type	Description	No. of tubes	Working volumes (mL)	Rotor Cat. No.
Microcentrifuge tube	1.5 - 2.0 mL	40	1.2 - 1.6	RH40-11
	1.5 - 2.0 mL	64	1.2 - 1.6	RH64-11
	1.5 - 2.0 mL	120	1.2 - 1.6	RH120-11
Glass and plastic tubes	0.5 mL (8 x 29 mm)	100	0.3	RH100-8
	0.4 mL (6 x 50 mm)	40	0.3	RH40-6
	0.4 mL (6 x 50 mm)	100	0.3	RH100-6
	12 x 75 mm, 13 x 100 mm	20	4	RH20-12
	1.5 - 2.0 (12 x 75 mm)	40	4	*RH40-12
	12 x 75 mm	72	4	RH72-12
	13 x 100 mm	20	8	RH20-12
	13 x 100 mm	32	8	RH32-13
	17.5 x 102 mm, 15 mL	8	15	RH8-17.5
	17 x 100 mm, 18 x 100 mm	8	10	RH8-18
	17 x 95 mm, 16 x 100 mm			
	18 x 150 mm	4	24	RH4-18-150
	25 x 105 mm, 30 mL	6	30	RH6-25
	16 x 120 mm, 17 x 120 mm, 15 mL	10	12	RH10-15
	50 mL, 28 x 115 mm	6	40	RH6-50
	12 x 32 mm, 12 x 40 mm	60	2	RH60-12-40
	20 x 47 mm, 20 x 58 mm	12	2.4	RH12-20
Glass vials	1 dram vial, 15 x 45 mm (4 mL)	24	3	RH24-15
	20 x 60 mm, 20 x 58 mm, 20 x 47 mm	12	4	RH12-20
Mini-scintillation vial	18 x 52 mm	24	5.6	RH24-18
	28 x 60 mm	12	16	RH12-28
Pear-shaped flask	100 mL	4	80	RH4-100
Microplate	Shallow well plates	2	0.3	RH2MP

\*Standard with SPD1030P1 unit

Large capacity rotors for SpeedVac SPD2030 Vacuum Concentrator				
Tube type	Description	No. of tubes	Working volumes (ml)	Rotor Cat. No.
Microcentrifuge tube	1.5 - 2.0 mL	200	1.2 - 1.6	*RH200-12
Glass and plastic tubes	12 x 75 mm	200	4	*RH200-12
	13 x 100 mm	118	8	*RH200-12
	16 x 100 mm	96	10	RH96-16-100
	16 x 125 mm (for UMA)	88	12	**RH88-16-125U
	17 x 100 mm, 16 x 100 mm	60	10	RH60-17-100
	18 x 125 mm	48	15	RH48-18-125
	18 x 150 mm, 16 x 125 mm	32	24	RH32-18-150
	15 mL (16 x 120 mm, 17 x 120 mm)	52	12	RH52-15
Centrifuge tubes	15 mL (17 x 120 mm)	30	12	RH60-17-100
	50 mL (28 x 115 mm), (for UMA)	48	40	**RH48-50U
Glass vials	1 dram vial, 15 x 45 mm (4 mL)	192	3	RH192-15
	28 x 60 mm, 28 x 50 mm	50	16	RH50-28-60
Flasks	100 mL flask	8	80	RH8-200
	100 mL recovery flask	8	80	RH8-100
Bottles	250 mL centrifuge bottles	8	250	RH8-200
Microplate	Shallow well	12	0.3	MPTR12-210
	Deep well	8	42737	MPTR8-210
Rotor with swings	4-position rotor holds 4 carriers/4 blocks			**FPR-4A

\*Standard with SPD2030P1 unit

\*\*Use with PRO-10, PRO-20 or PRO-50 Upgrades (SUMAX400)

# Efficient evaporation of biological samples

The Thermo Scientific™ Savant™ SpeedVac™ SPD120 Vacuum Concentrator can be used with a wide variety of solvents and offers resistance to methanol, acetonitrile w/ 0.1% TFA, and other aggressive solvents used in DNA and biological samples. With a medium-capacity, modular-design, the SPD120 Vacuum Concentrator can also be used for applications where freeze-drying or lyophilization is needed.

## Benefits

- **Proven reliability:** Over 50 years of experience behind the Savant SpeedVac family of products.
- **Consistency of drying time:** Glass lid helps reduce drying times and prevents condensation.
- **User friendly:** An intuitive interface allows the use of 3 modifiable preset programs to set the temperature and run time for efficient operation.
- **Safety assurance:** Standard lid is equipped with a soft-close mechanism that locks securely to help ensure safety for samples and users. Provides hands-free operation when loading or unloading the rotor lid-stay mechanism. Audible alarm to alert user when operation is finished.
- **Data transfer:** Ability to download live run data from a USB port helps ensure accurate and consistent data collection and transferability.

## Applications

- DNA biological samples
- DNA/RNA precipitates
- HPLC samples



- PCR sample preparations
- Oligonucleotide samples
- Drying lipid extracts
- Flash chromatography fractions
- Solid-phase synthesis cleavage solutions such as protein hydrolysates and evaporating synthesis solids
- Natural product purification

## Industries

- Pharmaceutical
- Life science
- Biotech (molecular and protein biology)
- Academic research
- Industrial
- Agricultural
- Food and beverage

Product specifications for the Savant SpeedVac SPD120 Vacuum Concentrator	
Physical properties	
Dimensions (W x D x H)	13 x 18 x 14 in (33 x 46 x 36 cm)
Additional required ventilation space	3 in. (8 cm) on all sides
Shipping dimensions	
Boxed (W x D x H)	24 x 32 x 24 in. (61 x 81 x 61 cm)
Product weight	57 lb (26 kg)
Shipping weight (boxed)	75 lb (34 kg)
Materials of construction	
Type of cover	Glass safety cover
Chamber	PTFE-coated aluminum
Chamber seal	Silicone rubber
Fittings	Polypropylene
Operational requirements	
SPD120-115	115 VAC, 60 Hz, 6 A
SPD120-230	230 VAC, 50 Hz, 3 A
Plug configuration: SpeedVac SPD120-115	NEMA 5-15P
Plug configuration: SpeedVac SPD120-230	SCHUKO CEE 7-7 (European plug), IEC 60320 C13 (Chinese Plug), B1363W/13A (UK plug)
Typical rotor spin speed (without rotor)	50 Hz, 1,300 RPM
	60 Hz, 1,630 RPM
User interface/display	
Temperature settings	Ambient, 35–80°C in 5°C increments
Heat-time setting	1 min to 9 hr 59 min and continuous
Run-time setting	1 min to 9 hr 59 min and continuous, manual mode
Vacuum ramp rate	NA
Vacuum level control	NA
Number of modifiable preset programs	3
Lid-lock indicator	Yes
Auto and manual run buttons	Yes
Preheat button	Yes
Compliance	
Certifications	UL listed to US and Canadian requirements; CE marked



SpeedVac SPD120P1 Vacuum Concentrator Kit

## SpeedVac SPD120 Vacuum Concentrator kits and components

Choose from one of two kits available: The SpeedVac SPD120P1 kit for standard evaporation or the SpeedVac SPD120P2 kit for standard evaporation including lyophilization

SPD120 kits and components		
Cat. No.	Component Cat. No.	Description
SPD120P1-115	SPD120-115	SpeedVac Vacuum Concentrator
	UVS450-115	Universal vacuum source (–55 °C)
	TFK100	Tubing kit
	SCC1	CryoCool™ heat transfer (1 L)
	GCF400	Glass condensation flask
	RH40-11	Rotor
SPD120P2-115	SPD120-115	Vacuum Concentrator
	RVT5105-115	Ultralow-temperature refrigerated vapor trap (–105°C)
	VLP120-115	Vacuum pump
	DVG50-UNV	Digital vacuum gauge
	RH40-11	Rotor
	SCT120	Chemical trap cartridge
	DC120A	Cartridge for vapor trap
	SCC1	CryoCool heat transfer (1 L)
	GCF400	Glass condensation flask
	SPO1-B	Vacuum pump oil
	UTP-TYG	Universal tubing kit





SpeedVac SPD120P2 Vacuum Concentrator Kit

SpeedVac SPD120 Vacuum Concentrator kits and components		
Cat. No.	Component Cat. No.	Description
SPD120P1-230	SPD120-230	Vacuum concentrator
	UVS450A-230	Universal vacuum source (–55°C)
	TFK100	Tubing kit
	SCC1	Cryocool™ heat transfer (1 L)
	GCF400	Glass condensation flask
	RH40-11	Rotor
SPD120P2-230	SPD120-230	Vacuum concentrator
	RVT5105-230	Ultralow-temperature refrigerated vapor trap (–105°C)
	VLP120-230	Vacuum pump
	DVG50-UNV	Digital vacuum gauge
	RH40-11	Rotor
	SCT120	Chemical trap cartridge
	DC120A	Cartridge for vapor trap
	SCC1	CryoCool™ heat transfer (1 L)
	GCF400	Glass condensation flask
	SPO1-B	Vacuum pump oil
	UTP-TYG	Universal tubing kit

Traditional rotors for SpeedVac SPD120 Vacuum Concentrator				
Sample format type	Working volume (mL)	No.	Description	Traditional rotor Cat. No.
Microcentrifuge tubes	1.2–1.6	40	1.5–2.0 mL	RH40-11
	1.2–1.6	64	1.5–2.0 mL	RH64-11
	1.2–0.6	120	1.5–2.0 mL	RH120-11
	3.5	10	17 x 60 mm (5 mL)	RH10-15
Glass and plastic tubes	0.3	100	0.4 mL (96 x 50 mm)	RH100-6
	0.3	100	0.5 mL (8 x 29)	RH100-8
	4	40	1.5–20 mL (12 x 75 mm)	RH40-12
	4	72	12 x 75 mm	RH72-12
	8	32	13 x 100 mm	RH32-13
	15	8	17.5 x 102 mm, 15 mL Corex tubes	RH8-17.5
	10	8	18 x 100 mm, 17 x 95, 16 x 100	RH8-18
Centrifuge tubes	12	10	15 mL conical (16 x 120 mm)	RH10-15
	40	6	50 mL conical (28 x 115 mm)	RH6-50
Flasks	80	4	100 mL pear-shaped flask	RH4-100
Vials	2	60	12 x 32 mm, 12 x 40 mm	RH60-12-40
	3	24	1-dram vials, 15 x 45 mm (4 mL)	RH24-15
	2.4, 4.0	12	20 x 47 mm, 20 x 60 mm	RH12-20
	5.6	24	18 x 52 mm scintillation vial	RH24-18
	16	12	28 x 60 mm, 20 mL scintillation vial	RH12-28
Microwell plates	–	2	Shallow-well plates	RHDW2MP
	–	6	Shallow-well plates	RHSW6MP

## Ordering information

SPD120 models and kits	
Description	Cat. No.
SPD120 Vacuum Concentrator, 115 V/60 Hz	SPD120-115
SPD120 Vacuum Concentrator, 230 V/50 Hz	SPD120-230
SPD120P1 Vacuum Concentrator Kit, 115 V/60 Hz	SPD120P1-115
SPD120P1 Vacuum Concentrator Kit, 230 V/50 Hz	SPD120P1-230
SPD120P2 Vacuum Concentrator Kit, 115 V/60 Hz	SPD120P2-115
SPD120P2 Vacuum Concentrator Kit, 230 V/50 Hz	SPD120P2-230
SpeedVac Vacuum Concentrator accessories	
Glass condensation flask	GCF400
Flask cover for Cat. No. GCF400	FC400
Foam insulating ring	145-6012-00
CryoCool heat transfer fluid (1 L)	SCC1*
Post-trap assembly for oligo preps; used on UVS850DDA only	ANT100
Ammonia-neutralizing solution for oligo preps; used on UVS850DDA only	ANS121
Chemical trap (order cartridges separately)	SCT120
Chemical trap kit for radioactivity (compatible with all Thermo Scientific™ Vacuum Concentrator products)	DTK120R
Disposable cartridge for neutralizing acid	DC120A
Disposable cartridge for trapping volatile radioactivity	DC120R
Deluxe convenience cart for SpeedVac™ systems	CC120/DX

\* Hazardous materials: These items require special shipping and handling when shipped by air.

Find out more at [thermofisher.com/speedvac](https://thermofisher.com/speedvac)

This product is intended for General Laboratory Use. It is the customer's responsibility to ensure that the performance of the product is suitable for customers' specific use or application. © 2018-2020 Thermo Fisher Scientific Inc. All rights reserved. All trademarks are the property of Thermo Fisher Scientific and its subsidiaries unless otherwise specified. COL07105 0320

Ordering Information					
SpeedVac Kit	Cat. No.	Description	SpeedVac Kit	Cat. No.	Description
SPD1030P1-115	SPD1030-115	Vacuum concentrator	SPD1030P1-230	SPD1030-230	Vacuum concentrator
	RH40-11	Rotor		RH40-11	Rotor
	SCC1	CryoCool™ 1L heat transfer liquid		SCC1	CryoCool 1L heat transfer liquid
	GCF400	Glass condensation flask		GCF400	Glass condensation flask
SPD1030A-115	SPD1030-115	Vacuum concentrator	SPD1030A-230	SPD1030-230	Vacuum concentrator
	GCF400	Glass condensation flask		GCF400	Glass condensation flask
	FC400	Flask cover for GCF400		FC400	Flask cover for GCF400
SPD2030P1-220	SPD2030-220	Vacuum concentrator	SPD2030P1-230	SPD2030-230	Vacuum concentrator
	RH200-12	Rotor		RH200-12	Rotor
	SCC1	CryoCool 1L heat transfer liquid		SCC1	CryoCool 1L heat transfer liquid
	GCF400	Glass condensation flask		GCF400	Glass condensation flask
SPD2030A-220	SPD2030-220	Vacuum concentrator	SPD2030A-230	SPD2030-230	Vacuum concentrator
	GCF400	Glass condensation flask		GCF400	Glass condensation flask
	FC400	Flask cover for GCF400		FC400	Flask cover for GCF400

#### Rotor upgrade kits for SPD2030 only

PRO-10	Includes FPR-4A rotor, (4) UPC-1 single-shelf carriers, and SUMAX400 upper magnet assembly
PRO-20	Includes FPR-4A rotor, (4) UPC- 2 two-shelf carriers for microplates, and SUMAX400 upper magnet assembly
PRO-50	Includes FPR-4A rotor, (4) UPC-5 5-shelf carriers for shallow-well microplates, and SUMAX400 upper magnet assembly

#### Additional accessories

##### Vapor trap (included with the system)

GCF400	Glass condensation flask
FC400	Flask cover for GCF400
145-6012-00	Foam insulating ring
*SCC1	CryoCool heat transfer fluid (1 liter)

##### Oligo prep

ANT100	Oligo prep post-trap assembly
ANS121	Ammonia-neutralizing solution (1 bottle) for use with ANT100

##### Chemical traps

SCT120	Chemical trap (order cartridges separately)
DTK120R	Chemical trap kit for radioactivity
*DC120A	Disposable cartridge for neutralizing acid
DC120R	Disposable cartridge for trapping volatile radioactivity

##### Cart

CC120/DX	Deluxe convenience cart
----------	-------------------------

\*Hazardous Materials -These items require special handling when shipped by air.

Find out more at [thermofisher.com/speedvac](https://thermofisher.com/speedvac)

**ThermoFisher**  
SCIENTIFIC



# Evaporation of solvents for combinatorial chemistry

The Thermo Scientific™ Savant™ SpeedVac™ SPD130DLX Vacuum Concentrator is a medium-capacity, vacuum concentrator with a modular design. It is compatible with a wide variety of solvents and offers resistance to TFA, DMSO, and other aggressive solvents used in combinatorial chemistry applications.

## Benefits

- **Proven reliability:** Over 50 years of experience stand behind the Savant SpeedVac family of products.
- **Consistency of drying time:** Heated glass lid helps reduce drying times and prevents condensation.
- **User friendly:** Intuitive interface allows use of 3 preset programs and 3 user-defined programs to set the temperature, run time, and to control the end-point determination of the vacuum for efficient operation.
- **Safety assurance:** Standard lid is equipped with a soft-close mechanism that locks securely to help ensure safety for samples and users. Hands-free operation when loading or unloading the rotor is enabled with a lid stay mechanism. An audible alarm alerts the user when the operation is finished.
- **Data transfer:** Ability to download live run data from a USB port enhances data transferability.

## Applications

- Removing ethyl acetate from samples for CAT assay
- Drug metabolites in solid phase extracts
- Analyte elution solvents for evaporation



## Solvents and solvent combinations

- Acetone
- Chloroform
- Ethyl acetate
- Hexane
- Methylene chloride

## Industries

- Pharmaceutical
- Life science
- Biotech (molecular and protein biology)
- Academic research
- Industrial
- Agricultural
- Food and beverage

Product specifications for the Savant SpeedVac SPD130DLX Vacuum Concentrator	
Physical properties	
Dimensions (W x D x H)	13 x 18 x 14 in. (33 x 46 x 36 cm)
Additional required ventilation space	3 in. (8 cm) on all sides
Shipping dimensions	
Boxed (W x D x H)	24 x 32 x 24 in. (61 x 81 x 61 cm)
Product weight	57 lb (26 kg)
Shipping weight (boxed)	75 lbs (34 kg)
Materials of construction	
Type of cover	Radiant glass safety cover
Chamber	PTFE-coated aluminum
Chamber seal	Silicone rubber
Fittings	Polypropylene
Operational requirements	
SPD130DLX-115	115 VAC, 60 Hz, 6 A
SPD130DLX-230	230 VAC, 50 Hz, 3 A
Plug configuration: SPD130DLX-115	NEMA 5-15P
Plug configuration: SPD130DLX-230	SCHUKO CEE 7-7 (European plug), IEC 60320 C13 (Chinese Plug), B1363W/13A (UK plug)
Typical rotor spin speed (without rotor)	50 Hz, 1,300 RPM
	60 Hz, 1,630 RPM
User interface/display	
Temperature settings	Ambient, 35 to 80°C in 5°C increments
Heat time setting	1 min to 9 hr 59 min and continuous
Run time setting	1 min to 9 hr 59 min and continuous in manual mode
Vacuum ramp rate	NA
Vacuum level control	Vacuum end point mode
Number of preset programs	3
Number of user-defined programs	3
Lid lock indicator	Yes
Auto and manual run buttons	Yes
Radiant lamp on/off buttons	Yes
Preheat button	Yes
Compliance	
Certifications	UL listed to US and Canadian requirements; CE marked



SpeedVac SPD130P1 Vacuum Concentrator Kit

SpeedVac SPD130DLX Vacuum Concentrator Kits and components		
Cat. No.	Component Cat. No.	Description
SPD130P1-115	SPD130DLX-115	Vacuum concentrator
	RVT5105-115	Ultralow-temperature refrigerated vapor trap (−105°C)
	OFP400-115	Vacuum pump
	DVG50-UNV	Digital vacuum gauge
	VTK80	Vacuum tubing kit
	SCT120	Chemical cartridge trap
	DC120A	Cartridge for vapor trap
	SCC1	CryoCool™ heat transfer fluid (1 L)
	GCF400	Glass condensation flask
	RH64-11	Rotor
SPD130P1-230	SPD130DLX-230	Vacuum concentrator
	RVT5105-230	Ultralow-temperature refrigerated vapor trap (−105°C)
	OFP400-230	Vacuum pump
	DVG50-UNV	Digital vacuum gauge
	VTK80	Vacuum tubing kit
	SCT120	Chemical cartridge trap
	DC120A	Cartridge for vapor trap
	SCC1	CryoCool heat transfer fluid (1 L)
	GCF400	Glass condensation flask
	RH64-11	Rotor

SpeedVac SPD130DLX Vacuum Concentrator	
Cat. No.	Description
SPD130DLX-115	SPD130DLX Vacuum Concentrator, 115 V/60 Hz
SPD130DLX-230	SPD130DLX Vacuum Concentrator, 230 V/50 Hz
SPD130P1-115	SPD130P1 Vacuum Concentrator Kit, 115 V/60 Hz
SPD130P1-230	SPD130P1 Vacuum Concentrator Kit, 230 V/50 Hz

Traditional rotors for the SpeedVac SPD130DLX Vacuum Concentrator				
Sample format type	Working volume (mL)	No.	Description	Traditional rotor model
Microcentrifuge tubes	1.2–1.6	40	1.5–2.0 mL	RH40-11
	1.2–1.6	64	1.5–2.0 mL	RH64-11
	1.2–1.6	120	1.5–2.0 mL	RH120-11
	3.5	10	17 x 60 mm (5 mL)	RH10-15
Glass and plastic tubes	0.3	100	0.4 mL (96 x 50 mm)	RH100-6
	0.3	100	0.5 mL (8 x 29)	RH100-8
	4	40	1.5 – 20 mL (12 x 75 mm)	RH40-12
	4	72	12 x 75 mm	RH72-12
	8	32	13 x 100 mm	RH32-13
	15	8	17.5 x 102 mm, 15 mL Corex tubes	RH8-17.5
	10	8	18 x 100 mm, 17 x 95 mm, 16 x 100 mm	RH8-18
Centrifuge tubes	12	10	15 mL conical (16 x 120 mm)	RH10-15
	40	6	50 mL conical (28 x 115 mm)	RH6-50
Flasks	80	4	100 mL pear-shaped flask	RH4-100
Vials	2	60	12 x 32 mm, 12 x 40 mm	RH60-12-40
	3	24	1-dram vials, 15 x 45 mm (4 mL)	RH24-15
	2.4, 4	12	20 x 47 mm, 20 x 60 mm	RH12-20
	5.6	24	18 x 52 mm scintillation vial	RH24-18
	16	12	28 x 60 mm, 20 mL scintillation vial	RH12-28
Microwell plates	–	2	Shallow-well plates	RHDW2MP
	–	6	Shallow-well plates	RHSW6MP

SpeedVac Vacuum Concentrator accessories	
Cat. No.	Description
GCF400	Glass condensation flask
FC400	Flask cover for Cat. No. GCF400
145-6012-00	Foam insulating ring
SCC1*	CryoCool heat transfer fluid (1 liter)
ANT100	Post-trap assembly for oligo preps; used on UVS850DDA only
ANS121	Ammonia-neutralizing solution for oligo preps; used on UVS850DDA only
SCT120	Chemical trap (order cartridges separately)
DTK120R	Chemical trap kit for radioactivity (compatible with all Thermo Scientific vacuum concentrator products)
DC120A	Disposable cartridge for neutralizing acid
DC120R	Disposable cartridge for trapping volatile radioactivity
CC120/DX	Deluxe convenience cart for SpeedVac™ Vacuum Concentrator systems

\* Hazardous materials: These items require special shipping and handling when shipped by air.

Find out more at [thermofisher.com/speedvac](https://thermofisher.com/speedvac)

**ThermoFisher**  
SCIENTIFIC



# Dry-down aggressive organic solvents with efficiency

The Thermo Scientific™ Savant™ SpeedVac™ SPD140DDA Vacuum Concentrator is a medium-capacity vacuum concentrator with a modular design, ideal for drying aggressive organic solvents, strong acids, bases, and combinatorial chemistry solvents.

## Benefits

- **Proven reliability:** Over 50 years of experience stand behind the Savant SpeedVac family of products.
- **Consistency of drying time:**
  - Is aided by radiant lamps, a PTFE-coated chamber, and tubing for drying solvents with low and high-boiling points and strong acids and bases such as DMSO, methylene chloride, TFA, and more.
  - Heated glass lid helps reduce drying times and prevent condensation. Dual control of vacuum ramp and vacuum levels help eliminate sample bumping and freezing.
- **User friendly:** Intuitive interface allows use of 4 preset programs and 8 user-defined programs to set the temperature, ramp rate, and vacuum level for efficient operation.
- **Safety assurance:** Standard lid is equipped with a soft-close mechanism that locks securely to help ensure safety for samples and users. Hands-free operation when loading or unloading the rotor is enabled with a lid stay mechanism. An audible alarm alerts the user when operation is finished.
- **Data transfer:** Ability to download live run data from a USB port enhances data transferability.

## Applications

- Solid-phase extractions
- Drying lipid extracts



- Flash chromatography fractions
- Solid-phase synthesis cleavage solutions such as protein hydrolysates and evaporating synthesis solids
- Compound management

## Industries

- Pharmaceutical
- Life science
- Biotech (molecular and protein biology)
- Academic research
- Industrial
- Agricultural
- Food and beverage

## Product specifications for the Savant SpeedVac SPD140DDA Vacuum Concentrator

### Physical properties

Dimensions (W x D x H) 13 x 18 x 14 in. (33 x 46 x 36 cm)

Additional required ventilation space 3 in. (8 cm) on all sides

### Shipping dimensions

Boxed (W x D x H) 24 x 32 x 24 in. (61 x 81 x 61 cm)

Product weight 57 lb (26 kg)

Shipping weight (boxed) 75 lb (34 kg)

### Materials of construction

Type of cover Heated glass safety cover

Chamber PTFE-coated aluminum

Chamber seal Viton™ rubber

Fittings Polypropylene

### Operational requirements

SPD140DDA-115 115 VAC, 60 Hz, 6 A

SPD140DDA-230 230 VAC, 50 Hz, 3 A

Plug configuration: SPD140DDA-115 NEMA 5-15P

Plug configuration: SPD140DDA-230 SCHUKO CEE 7-7 (European plug), IEC 60320 C13 (Chinese Plug), B1363W/13A (UK plug)

Typical rotor spin speed (without rotor)  
50 Hz, 1,300 RPM  
60 Hz, 1,630 RPM

### User interface/display

Temperature settings Ambient, 35 to 80°C in 5°C increments

Heat time setting 1 min to 9 hr 59 min and continuous

Run time setting 1 min to 9 hr 59 min and continuous in manual mode

Vacuum ramp rate setting 1 to 5

Vacuum level control 20 Torr to 100 mTorr in 0.1 Torr increments (26 mbar to .13 mbar)

Number of preset programs 4

Number of user-defined programs 8

Lid lock indicator Yes

Auto and manual run buttons Yes

Radiant lamp on/off buttons Yes

Preheat button Yes

### Compliance

Certifications UL listed to US and Canadian requirements; CE marked

SpeedVac SPD140DDA vacuum concentrator	
Cat. No.	Description
SPD140DDA-115	SPD140DDA Vacuum Concentrator, 115 V/60 Hz
SPD140DDA-230	SPD140DDA Vacuum Concentrator, 230 V/50 Hz
SPD140P1-115	SPD140P1 Vacuum Concentrator Kit, 115 V/60 Hz
SPD140P1-230	SPD140P1 Vacuum Concentrator Kit, 230 V/50 Hz
SPD140P2-115	SPD140P2 Vacuum Concentrator Kit, 115 V/60 Hz
SPD140P2-230	SPD140P2 Vacuum Concentrator Kit, 230 V/50 Hz



SpeedVac SPD140P1 Vacuum Concentrator Kit



SpeedVac SPD140P2 Vacuum Concentrator Kit

SpeedVac SPD140DDA Vacuum Concentrator Kits and components		
Cat. No.	Component Cat. No.	Description
SPD140P1-115	SPD140DDA-115	Vacuum concentrator
	RVT5105-115	Ultralow-temperature refrigerated vapor trap (−105°C)
	OFP400-115	Vacuum pump
	RH40-12	Rotor
	VTK80	Vacuum tubing kit
	SCC1	CryoCool™ heat transfer fluid (1 L)
	GCF400	Glass condensation flask
SPD140P2-115	SPD140DDA-115	Vacuum concentrator
	UVS850DDA-115	Universal vacuum source (−50°C)
	RH24-15	Rotor
	VTK80	Vacuum tubing kit
	SCC1	CryoCool heat transfer fluid (1 L)
	GCF400	Glass condensation flask



## SpeedVac SPD140DDA Vacuum Concentrator Kits and components

Cat. No.	Component Cat. No.	Description
SPD140P1-230	SPD140DDA-230	Vacuum concentrator
	RVT5105-230	Ultralow-temperature refrigerated vapor trap (–105°C)
	OFP400-230	Vacuum pump
	RH40-12	Rotor
	VTK80	Vacuum tubing kit
	SCC1	CryoCool heat transfer fluid (1 L)
	GCF400	Glass condensation flask

## Traditional rotors for the SpeedVac SPD140DDA Vacuum Concentrator

Sample format type	Working volume (mL)	Number	Description	Traditional rotor model
Microcentrifuge tubes	1.2–1.6	40	1.5–2.0 mL	RH40-11
	1.2–1.6	64	1.5–2.0 mL	RH64-11
	1.2–1.6	120	1.5–2.0 mL	RH120-11
	3.5	10	17 x 60 mm (5 mL)	RH10-15
Glass and plastic tubes	0.3	100	0.4 mL (96 x 50 mm)	RH100-6
	0.3	100	0.5 mL (8 x 29)	RH100-8
	4	40	1.5–20 mL (12 x 75 mm)	RH40-12
	4	72	12 x 75 mm	RH72-12
	8	32	13 x 100 mm	RH32-13
	15	8	17.5 x 102 mm, 15 mL corex tubes	RH8-17.5
	10	8	18 x 100 mm, 17 x 95, 16 x 100	RH8-18
Centrifuge tubes	12	10	15 mL conical (16 x 120 mm)	RH10-15
	40	6	50 mL conical (28 x 115 mm)	RH6-50
Flasks	80	4	100 mL pear-shaped flask	RH4-100
Vials	2	60	12 x 32 mm, 12 x 40 mm	RH60-12-40
	3	24	1-dram vials, 15 x 45 mm (4 mL)	RH24-15
	2.4, 4	12	20 x 47 mm, 20 x 60 mm	RH12-20
	5.6	24	18 x 52 mm scintillation vial	RH24-18
	16	12	28 x 60 mm, 20 mL scintillation vial	RH12-28
Microwell plates	–	2	Shallow-well plates	RHDW2MP
	–	6	Shallow-well plates	RHSW6MP

**SpeedVac Vacuum Concentrator accessories**

Cat. No.	Description
GCF400	Glass condensation flask
FC400	Flask cover for GCF400
145-6012-00	Foam insulating ring
SCC1*	CryoCool heat transfer fluid (1 L)
ANT100	Post-trap assembly for oligo preps; used on UVS850DDA only
ANS121	Ammonia-neutralizing solution for oligo preps; used on UVS850DDA only
SCT120	Chemical trap (order cartridges separately)
DTK120R	Chemical trap kit for radioactivity (compatible with all Thermo Scientific vacuum concentrator products)
DC120A	Disposable cartridge for neutralizing acid
DC120R	Disposable cartridge for trapping volatile radioactivity
CC120/DX	Deluxe convenience cart for SpeedVac systems

\* Hazardous materials: These items require special shipping and handling when shipped by air.

Find out more at [thermofisher.com/speedvac](https://thermofisher.com/speedvac)

**ThermoFisher**  
SCIENTIFIC

# High-volume evaporation of aqueous and organic solvents

The Thermo Scientific™ Savant™ SpeedVac™ SPD210 Vacuum Concentrator is a large-capacity vacuum concentrator with a modular design, ideal for drying aqueous and organic solvents. It is capable of drying larger quantities of samples at one time and will support your high-volume sample preparation needs.

## Benefits

- **Proven reliability:** Over 50 years of experience stands behind the Savant SpeedVac family of products.
- **Convenience and flexibility:** The heavy-duty universal rotor is optimized for efficient large-sample processing while accommodating various sample handling formats, from microcentrifuge tubes and microplates to 250 mL centrifuge bottles.
- **User friendly:** Intuitive interface has three preset programs that can be easily modified by the user to set the temperature and run time for efficient operation.
- **Safety assurance:** Lid is equipped with a soft-close mechanism that locks securely to help ensure safety for samples and users. An alarm alerts the user when the when operation is finished.
- **Sample integrity:** Ability to download live run data from a USB port enhances data transferability.

## Applications

- Solid-phase extractions
- Drying lipid extracts
- Flash chromatography fractions
- Solid-phase synthesis cleavage solutions such as protein hydrolysates and evaporating synthesis solids
- HPLC



## Industries

- Pharmaceutical
- Life science
- Biotech (molecular and protein biology)
- Academic research
- Industrial
- Agricultural
- Food and beverage

## Product specifications for the Savant SpeedVac SPD210 Vacuum Concentrator

### Physical properties

**Dimensions (W x D x H)** 19 x 26 x 18 in. (48 x 66 x 46 cm)

**Additional required ventilation space** 3 in. (8 cm) on all sides

### Shipping dimensions

**Boxed (W x D x H)** 31 x 25 x 42 in. (79 x 64 x 107 cm)

**Product weight** 106 lb (48 kg)

**Shipping weight (boxed)** 131 lb (65 kg)

### Materials of construction

**Type of cover** Glass safety cover

**Chamber** PTFE-coated aluminum

**Chamber seal** Viton™ rubber

**Fittings** Polypropylene

### Operational requirements

**SPD210-115** 115 VAC, 60 Hz, 8 A

**SPD210-230** 230 VAC, 50 Hz, 6 A

**Plug configuration: SPD210-115** NEMA 5-15P

**Plug configuration: SPD210-230** SCHUKO CEE 7-7 (European plug), IEC 60320 C13 (Chinese Plug), B1363W/13A (UK plug)

**Typical rotor spin speed (without rotor)**  
50 Hz, 850 RPM  
60 Hz, 1,060 RPM

### User interface/display

**Temperature settings** Ambient, 35 to 65°C in 5°C increments

**Heat time settings** 1 min to 9 hr 59 min and continuous

**Run time settings** 1 min to 9 hr 59 min and continuous in manual mode

**Programs** 3 selectable programs by applications—can be modified and stored.

**Lid lock indicator** Yes

**Auto and manual run buttons** Yes

**Preheat button** Yes

### Compliance

**Certifications** UL listed to US and Canadian requirements; CE marked

## SpeedVac SPD210 Vacuum Concentrator

Cat. No.	Description
SPD210-115	SpeedVac SPD210 Vacuum Concentrator, 115 V/60 Hz
SPD210-230	SpeedVac SPD210 Vacuum Concentrator, 230 V/50 Hz
SPD210P1-115	SpeedVac SPD210 Modular System for use with oil pump, 115 V/60 Hz
SPD210P1-230	SpeedVac SPD210 Modular System for use with oil pump, 230 V/50 Hz
SPD210P2-115	SpeedVac SPD210 Modular System for use with oil-free pump, 115 V/60 Hz
SPD210P2-230	SpeedVac SPD210 Modular System for use with oil-free pump, 230V/50Hz



SpeedVac SPD210P1 Vacuum Concentrator Kit



## SpeedVac SPD210P2 Vacuum Concentrator Kit

SpeedVac SPD210 Vacuum Concentrator kit components		
Cat. No.	Component Cat. No.	Description
SPD210P1-115	SPD210-115	Vacuum concentrator
	RVT5105-115	Ultra-low temperature refrigerated vapor trap (−105°C)
	VLP120-115	Oil pump
	DVG50-UNV	Digital vacuum gauge
	SCT120	Chemical trap cartridge
	DC120A	Cartridge for vapor trap
	SCC1	CryoCool heat transfer fluid (1 L)
	GCF400	Glass condensation flask
	SPO1-B	Vacuum oil
	RH200-12	Rotor
	UTP-TYG	Universal tubing kit
SPD210P2 -115	SPD210-115	Vacuum concentrator
	UVS450-115	Universal vacuum source (−55°C)
	TFK100	Tubing kit
	SCC1	CryoCool heat transfer fluid (1 L)
	GCF400	Glass condensation flask
	RH200-12	Rotor



## SpeedVac SPD210 Vacuum Concentrator kit components

Cat. No.	Component Cat. No.	Description
SPD210P1-230	SPD210-230	Vacuum concentrator
	RVT5105-230	Ultra-low temperature refrigerated vapor trap (–105°C)
	VLP120-230	Oil pump
	DVG50-UNV	Digital vacuum gauge
	SCT120	Chemical trap cartridge
	DC120A	Cartridge for vapor trap
	SCC1	CryoCool heat transfer fluid (1 L)
	GCF400	Glass condensation flask
	SPO1-B	Vacuum oil
	RH200-12	Rotor
	UTP-TYG	Universal tubing kit
SPD210P2-230	SPD210-230	Vacuum concentrator
	UVS450A-230	Universal vacuum source (–55°C)
	TFK100	Tubing kit
	SCC1	CryoCool heat transfer fluid (1 L)
	GCF400	Glass condensation flask
	RH200-12	Rotor

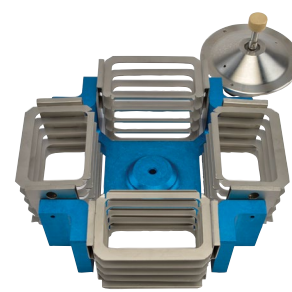
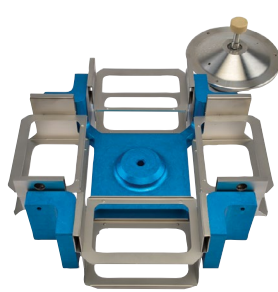
## Traditional rotors for the SpeedVac SPD210 Vacuum Concentrator

Tube type	Working volume (mL)	No.	Tube description	Traditional rotor model
Microcentrifuge tubes	1.2–1.6	200	1.5–2.0 mL	RH200-12
	3.5	30	17 x 60 mm (5 mL)	RH60-17-100
Glass and plastic tubes	4	200	12 x 75 mm	RH200-12
	8	118	13 x 100 mm	RH200-12
	12	48	16 x 125 mm, 18 x 125 mm	RH48-18-125
	24	32	18 x 150 mm, 16 x 125 mm	RH32-18-150
	24	88	16 x 125 mm	RH88-16-125
	12	30	15 mL conical (17 x 120 mm)	RH60-17-100
Centrifuge tubes	12	52	15 mL conical (16 x 120 mm)	RH52-15
	40	48	50 mL conical (28 x 115 mm)	RH48-50U
Flasks	80	8	100 mL pear-shaped flask	RH8-200
Vials	3	192	1-dram vials (15 x 45 mm), 4 mL	RH192-15
	16	50	28 x 60 mm, 20 mL scintillation vial	RH50-28-60
	–	12	Shallow-well	MPTR12-210

**PRO rotors: For use with four-position rotor (FPR-4A) for the SpeedVac SPD210 Vacuum Concentrator**

Type	Description	Number	Working volumes (mL)	Rotor block part no.
All blocks come as sets of two.				
Microcentrifuge tubes	1.5 mL	25	1.2–1.6	RBA25-11-39
	13 x 100 mm	35	8	RBA35-13-100
	16 x 100 mm	24	10	RBA24-16-100
	16 x 125 mm	15	12	RBA15-16-125
	17 x 60 mm	24	5	RBA24-17-60
Centrifuge tubes	50 mL conical (30 x 115 mm)	6	40	RBA6-30-115
	15 mL conical (17 x 120 mm)	24	12	RBA24-16-100
Vials	28 x 60 mm, 20 mL scintillation vial	12	4	RBA12-28-58
	19 x 65 flat bottom	24	4	RBA24-19-65
	12 x 32 mm	54	2	RBA54-12-32
	15 x 45 mm, 1 dram	24	–	RBA24-15-45
Round or flat bottom flask*	–	8	50 mL ea. flask	RBA2-FLSK-100
Microwell plates	Deep well (shallow well)	4	–	PRO-10 (rotor upgrade kit)
	Deep well (shallow well)	8	–	PRO-20 (rotor upgrade kit)
	Shallow well	20	–	PRO-50 (rotor upgrade kit)

\* On special order only.



In order, from left to right: Thermo Scientific PRO-10, PRO-20, and PRO-50 PRO-rotor upgrade kits

**PRO-rotor upgrade kits**

Rotor kit	Components
PRO-10	FPR-4A rotor, (4) UPC-1 single-shelf carriers, SUMAX400 upper magnet assembly
PRO-20	FPR-4A rotor, (4) UPC- 2 two-shelf carriers for microplates, SUMAX400 upper magnet assembly
PRO-50	FPR-4A rotor, (4) UPC-5 5-shelf carriers for shallow-well microplates, SUMAX400 upper magnet assembly

#### SpeedVac Vacuum Concentrator accessories

Cat. No.	Description
GF4000	Glass condensation flask (4 L)
FC400	Flask cover for Cat. No. GCF400
145-6012-00	Foam insulating ring
SCC1*	CryoCool heat transfer fluid (1 L)
RAD200	Rotor adapter for the SUMAX400 upper magnet assembly when using traditional rotors
ANT100	Post-trap assembly for oligo preps; used on UVS850DDA only
ANS121	Ammonia-neutralizing solution for oligo preps; used on UVS850DDA only
SCT120	Chemical trap (order cartridges separately)
DTK120R	Chemical trap kit for radioactivity (compatible with all Thermo Scientific™ vacuum concentrator products)
DC120A	Disposable cartridge for neutralizing acid
DC120R	Disposable cartridge for trapping volatile radioactivity
CC120/DX	Deluxe convenience cart for SpeedVac® systems

\* Hazardous materials: These items require special shipping and handling when shipped by air.

Find out more at [thermofisher.com/speedvac](https://thermofisher.com/speedvac)

This product is intended for General Laboratory Use. It is the customer's responsibility to ensure that the performance of the product is suitable for customers' specific use or application. © 2019-2020 Thermo Fisher Scientific Inc. All rights reserved. All trademarks are the property of Thermo Fisher Scientific and its subsidiaries unless otherwise specified. COL07131 0320

# High-volume drying of aggressive agents

Thermo Scientific™ Savant™ SpeedVac™ SPD300DDA Vacuum Concentrator is a large-capacity vacuum concentrator with a modular design, ideal for drying aggressive organic solvents, strong acids, bases, and combinatorial chemistry solvents. It is capable of drying larger quantities of samples at one time and can support high-volume sample preparation needs.

## Benefits

- **Proven reliability:** Over 50 years of experience stands behind the Savant SpeedVac family of products.
- **Consistency of drying time:** 4 IR heat lamps, a PTFE-coated chamber, and tubing for drying low and high-boiling point solvents and strong acids and bases such as DMSO, methylene chloride, TFA, and other acids. Heated glass lid reduces drying times and prevents condensation. Built-in digital vacuum gauge allows continuous monitoring of process to avoid “bumping” or uncontrolled boiling of solvents.
- **Convenience and flexibility:** The heavy-duty universal rotor is optimized for efficient large-sample processing while accommodating various sample handling formats, such as microcentrifuge tubes, microplates, and 250 mL centrifuge bottle.
- **User friendly:** User interface allows the use of 4 preset programs and 8 user-defined programs to set heat, run time, ramp rate, and vacuum level for efficient operation.
- **Safety assurance:** Standard glass lid locks securely to help ensure safety for samples and users. Hands free operation when loading or unloading the rotor with the lid stay mechanism. An audible alarm alerts the user when the operation is finished.
- **Sample integrity:** Ability to download live run data from a USB port enhances data integrity.



## Applications

- Solid-phase extractions
- Drying lipid extracts
- Flash chromatography fractions
- Solid-phase synthesis cleavage solutions such as protein hydrolysates and evaporating synthesis solids
- HPLC

## Industries

- Pharmaceutical
- Life science
- Biotech (molecular biology and protein)
- Academic research
- Industrial
- Agricultural
- Food and beverage

Product specifications for Savant SpeedVac SPD300DDA Vacuum Concentrator	
Physical properties	
Dimensions (W x D x H)	19 x 16 x 18 in (48 x 66 x 46 cm)
Additional required ventilation space	3 in (8 cm) on all sides
Shipping dimensions	
Boxed (W x D x H)	31 x 26 x 42 in (79 x 64 x 107 cm)
Product weight	117 lb (53 kg)
Shipping weight (boxed)	160 lb (73 kg)
Materials of construction	
Type of cover	Heated glass safety cover
Chamber	Teflon™ PTFE-coated aluminum
Chamber seal	Viton™ rubber
Fittings	Polypropylene
Operational requirements	
SPD300DDA-115	115 VAC, 60 Hz, 10 A
SPD300DDA-230	230 VAC, 50 Hz, 6 A
Plug configuration: SPD300DDA-115	Nema 5-15p
Plug configuration: SPD300DDA-230	Schuko cee 7-7 (Euro plug), BS1363W/13a fuse (UK plug), and IEC 60320 C13 (Chinese Plug)
Typical rotor spin speed (without rotor)	50 Hz 1,040 rpm
	60 Hz 1,060 rpm
User interface/display	
Temperature settings	Ambient, 35 to 80°C in 5°C increments
Heat time settings	1 min to 9 hr 59 min and continuous
Run time settings	1 min to 9 hr 59 min and continuous in manual mode
Vacuum ramp rate setting	1 to 5
Vacuum level control	20 Torr to 100 mTorr in 0.1 Torr increments (26 mbar to 0.13 mbar)
Number of preset programs	4
Number of user-defined programs	8
Lid lock indicator	Yes
Auto and manual run buttons	Yes
Radiant lamp on/off buttons	Yes
Preheat button	Yes
Compliance	
Certifications	UL listed to US and Canadian requirements; CE marked



SPD300P1 kit



SPD300P2 kit

### SpeedVac SPD300DDA kit components

Cat. No.	Part No.	Description
SPD300P1-115	SPD300DDA-115	Vacuum concentrator
	RVT5105-115	Ultralow-temperature refrigerated vapor trap (−105°C)
	FPR-4A	4-place flask/plate rotor accessory
	UPC-1	Single-shelf universal plate
	SCC1	Cryocool™ 1 L heat transfer fluid
	GF4000	Glass condensation flask
	VTK80	Vacuum tubing kit
	SPO1-B	Vacuum pump oil
	VLP120-115	Vacuum pump
SPD300P2-115		Vacuum concentrator
		Universal vacuum system (cold trap with oil-free pump)
	FPR-4A	4-place flask/plate rotor accessory
	UPC-1	Single-shelf universal plate
	SCC1	Cryocool 1 L heat transfer fluid
	GF4000	Glass condensation flask
SPD300P1-230	VTK80	Vacuum tubing kit
		Vacuum concentrator
	RVT5105-230	Ultralow-temperature refrigerated vapor trap (−105°C)
	FPR-4A	4-place flask/plate rotor accessory
	UPC-1	Single-shelf universal plate
	SCC1	Cryocool 1 L heat transfer fluid
	GF4000	Glass condensation flask
	VTK80	Vacuum tubing kit
SPD300P2-230	SPO1-B	Vacuum pump oil
	VLP120-230	Vacuum pump
		Vacuum concentrator
		Universal vacuum system (cold trap with oil-free pump)
	FPR-4A	4-place flask/plate rotor accessory
	UPC-1	Single-shelf universal plate
	SCC1	Cryocool 1 L heat transfer fluid
SPD300DDAA-115	GF4000	Glass condensation flask
	SPD30DDA-115	Vacuum concentrator
	FPR-4A	4-place flask/plate rotor accessory
SPD300DDAA-230	UPC-1	Single-shelf universal plate
	FPR-4A	4-place flask/plate rotor accessory
	GF4000	Glass condensation flask



Rotor blocks: for use with four-position rotor (FPR-4A)				
Type	Description	No. of tubes	Working volumes (mL)	Rotor block Cat. No.
All blocks come as sets of two.				
Microcentrifuge tubes	1.5 mL	50 (two packs of 25)	1.2–1.6	RBA25-11-39
	13 x 100 mm	70 (two packs of 35)	8	RBA35-13-100
	16 x 100 mm	48 (two packs of 24)	10	RBA24-16-100
	16 x 125 mm	30 (two packs of 15)	12	RBA15-16-125
	17 x 60 mm	48 (two packs of 24)	5	RBA24-17-60
Centrifuge tubes	50 mL conical (30 x 115 mm)	6	40	RBA6-30-115
	15 mL conical (17 x 120 mm)	24	12	RBA24-16-100
Vials	28 x 60 mm, 20 mL scintillation vial	12	4	RBA12-28-58
	19 x 65 flat bottom	24	4	RBA24-19-65
	12 x 32 mm	54	2	RBA54-12-32
	15 x 45 mm, 1-dram	24	3	RBA24-15-45
Round or flat bottom flask*	–	8	50 mL each flask	RBA2-FLSK-100

\* Note: Must be special ordered.

Traditional rotors for SPD300DDA vacuum concentrator (Requires purchase of adapter Cat. No. RAD200)				
Type	Description	No. of tubes	Working volumes (mL)	Rotor Cat. No.
Microcentrifuge tubes	1.5–2.0 mL	200	1.2–1.6	RH200-12
	17 x 60 mm (5 mL)	30	3.5	RH10-15
Glass and plastic tubes	12 x 75 mm	200	4	RH200-12
	13 x 100 mm	32	8	RH32-13
	16 x 25 mm, 18 x 125 mm	48	12	RH48-18-125
	18 x 150 mm, 16 x 125 mm	32	24	RH32-18-150
	16 x 125 mm	88	24	RH88-16-125
Centrifuge tubes	50 mL conical (28 x 115 mm)	48	40	RH48-50U
Flasks	100 mL pear-shaped flask	8	80	RH8-200
Vials	1-Dram vial (15 x 45 mm), 4 mL	192	3	RH192-15
	28 x 60 mm, 20 mL scintillation vial	50	16	RH50-28-60
Microwell plates	Shallow well	12	–	MPTR12-210
	Deep well (shallow well)	4	–	MPTR8-210

**SpeedVac vacuum concentrator accessories**

Description	Cat. No.
Glass condensation flask (4 L)	GF4000
White foam insulating ring for coverglass trap	121-6162-00
Cryocool heat transfer fluid (1 L)	SCC1*
Rotor adapter for the sumax400 upper magnet assembly	RAD200
Post-trap assembly for oligo preps; used on UVS850DDA only	ANT100
Ammonia-neutralizing solution for oligo preps; used on UVS850DDA only	ANS121
Chemical trap (order cartridges separately)	SCT120
Chemical trap kit for radioactivity	DTK120R
Disposable cartridge for neutralizing acid	DC120A
Disposable cartridge for trapping volatile radioactivity	DC120R
Deluxe convenience cart for SpeedVac systems	CC120/DX

\* Hazardous Materials: These items require special shipping and handling when shipped by air.

**SpeedVac ordering information**

Description	Cat. No.
SPD300 Modular System, 115 V/60 Hz, FPR-4A and UPC-1 carrier included. Order rotor blocks separately.	SPD300DDAA-115
SPD300 Modular Vacuum System, 230 V/50 Hz, FPR-4A and UPC-1 carrier included. Order rotor blocks separately.	SPD300DDAA-230
SPD300P1 Vacuum Concentrator Kit, 115 V	SPD300P1-115
SPD300P1 Vacuum Concentrator Kit, 230 V	SPD300P1-230
SPD300P2 Vacuum Concentrator Kit, 115 V	SPD300P2-115
SPD300P2 Vacuum Concentrator Kit, 230 V	SPD300P2-230

Find out more at [thermofisher.com/speedvac](https://thermofisher.com/speedvac)

This product is intended for General Laboratory Use. It is the customer's responsibility to ensure that the performance of the product is suitable for customers' specific use or application. © 2019-2020 Thermo Fisher Scientific Inc. All rights reserved. All trademarks are the property of Thermo Fisher Scientific and its subsidiaries unless otherwise specified. COL06840 0320

# Safely recover vapors after solvent evaporation

The recovery of solvents from samples after evaporation is complete is critical for safety. Without the aid of a trap, solvents would be released into the environment, exposing users to harmful vapors. Thermo Scientific offers two types of vapor recovery systems when using a modular vacuum concentrator system: Thermo Scientific™ Savant™ Refrigerated Vapor Traps and Thermo Scientific™ Savant™ Universal Vacuum Systems.

## Choosing a solvent extraction system

If you are using an oil pump with your vacuum concentrator, a refrigerated vacuum trap will complete your vacuum system. Alternatively a universal vacuum system is ideal if you do not already have a refrigerated vacuum trap or prefer to use an oil-free pump.

## Benefits

### Savant Refrigerated Vacuum Trap

- Reliable, easy-to-use benchtop cold traps for solvent vapor condensation and collection
- A replacement for dry ice/methanol traps and helps protect high-vacuum rotary vane oil pumps in a vacuum system



**Savant Refrigerated Vacuum Trap RVT5105 (front) and Savant Universal Vacuum System UVS450 (rear)**

## Savant Universal Vacuum System

- Low-maintenance vacuum system offers an alternative to systems based on an oil-filled vacuum pump, which require frequent maintenance and can be damaged by contaminating liquids
- Multi-purpose vacuum source and solvent recovery systems combined into a single, integrated unit
- Systems include a refrigerated vapor trap and an oil-free vacuum pump
- Thermo Scientific VaporNet™ technology allows increased control in the flow of molecules between the cold trap and vacuum in the UVS450A and UVS850 Vacuum Trap models

## Savant Refrigerated Vapor Trap product specifications

	RVT5105	RVT450
Physical properties		
Dimensions (W x D x H)	24 x 24 x 18.3 in (61 x 61 x 47 cm)	14 x 24 x 12 in (35 x 31 x 60 cm)
Weight	150 lb (68 kg)	71 lb (32 kg)
Operational specifications		
Capacity	4 L	4 L
Temperature	-105°C	-50°C
Solvent types	High boiling point solvents Low boiling solvents (DMSO, DMF)	Aqueous, organic solvents MEOH, ACN
Operational requirements		
Electrical 115 V	50/60Hz	50/60Hz
Electrical 230 V	50/60Hz	50/60Hz
Plug 115 V	NEMA 5-15P	NEMA 5-15P
Plug 230 V	SCHUKO CEE 7-7 (European plug), IEC 60320 C13 (Chinese Plug), B1363W/13A (UK plug)	SCHUKO CEE 7-7 (European plug), IEC 60320 C13 (Chinese Plug), B1363W/13A (UK plug)
Compliance		
Certifications	UL Listed to US and Canadian requirements. CE marked.	
Included accessories		
Glass condensation flask	GCF400	GCF400
Flask cap	FC400	FC400
Recommended accessories		
Heat transfer fluid	CryoCool™ SCC1 Fluid 1L, or CryoCool SCC5 Fluid 5L	CryoCool SCC1 Fluid 1L, or CryoCool SCC5 Fluid 5L



Savant RVT5105 Refrigerated Vapor Trap, Glass Condensation Flask and Flask Cap, disassembled

Savant RVT450 Refrigerated Vapor Trap, Glass Condensation Flask and Flask Cap, assembled



Savant UVS450 Universal Vacuum System



Savant UVS850DDA Universal Vacuum System

## Savant Universal Vacuum System product specifications

	UVS450 (115V)/UVS450A (230V)	UVS850DDA
<b>Physical properties</b>		
Dimensions (W x D x H)	14 x 18 x 24 in (25 x 45 x 60 cm)	14 x 18 x 24 in (25 x 45 x 60 cm)
Weight	113 lb (51 kg)	126 lb (57 kg)
<b>Operational specifications</b>		
Capacity	4 L	4 L
Temperature	-50°C	-50°C
Solvent types	Aqueous, organic solvents ME OH, ACN	High boiling point solvents using the vapor-net* feature; low boiling point solvents
<b>Operational requirements</b>		
Electrical 115 V	50Hz	50/60Hz
Electrical 230 V		50/60Hz
Plug 115 V	NEMA 5-15P	NEMA 5-15P
Plug 230 V	SCHUKO CEE 7-7 (European plug), IEC 60320 C13 (Chinese Plug), B1363W/13A (UK plug)	SCHUKO CEE 7-7 (European plug), IEC 60320 C13 (Chinese Plug), B1363W/13A (UK plug)
<b>Recommended accessories</b>		
Ammonia neutralizing	Post-trap Assembly ANT100	Ammonia-neutralizing Solution ANS121/4
Heat transfer fluid	CryoCool SCC1 Fluid 1L, or CryoCool SCC5 Fluid 5L	CryoCool SCC1 Fluid 1L, or CryoCool SCC5 Fluid 5L

\* Vapor-net: Vapor net prevents pump contamination and extends pump life by increasing the solvent vapor dwell time in the refrigerated vapor trap. It prevents volatile emissions. Vapor net can be used with aggressive high and low boiling point solvents.

## Compatible pump options to use with SpeedVac Vacuum Concentrators

Description	Pump Displacement	Cat. No.
Oil-free FTE/PFA 4-headed vacuum pump	30 L/min throughput at 50 Hz	OFP400
Oil-free scroll pump	96.7 L/min throughput at 50 Hz	OFP5C
Oil vacuum pump for freeze drying	76 L/min throughput at 60 Hz	FDP80
Oil vacuum pump for freeze drying	195 L/min throughput at 60 Hz	FDP200
Oil vacuum pump for freeze drying	195 L/min throughput at 60 Hz	VLP195FD
Deep oil vacuum pump for freeze drying	116 L/min throughput at 60 Hz; 97 L/min throughput at 50 Hz	VLP120
Deep oil vacuum pump for freeze drying	195 L/min throughput at 60 Hz; 162 L/min throughput at 50 Hz	VLP200
Deep oil vacuum pump for freeze drying	283 L/min throughput at 60 Hz; 237 L/min throughput at 50 Hz	VLP285
Deep oil vacuum pump for freeze drying	76 L/min throughput at 60 Hz; 62 L/min throughput at 60 Hz	VLP80

### Small capacity rotors compatible with the Savant SpeedVac DNA130 Vacuum Concentrator

Working volume (ml)	Capacity	Sample container	Rotor Cat. No.
1.2-1.6	24	1.5-2.0 ml microcentrifuge tubes	RD24
1.2-1.6	36	1.5-2.0 ml microcentrifuge tubes	RD36
0.5	48	0.5 ml microcentrifuge tubes	RD48
0.5	72	0.5 ml microcentrifuge tubes	RD72
--	2	Shallow well plates	RD2MP

### Medium capacity rotors compatible with Savant SpeedVac SPD120, SPD130DLX, SPD140DDA and SPD1030 Vacuum Concentrators

Working volume (ml)	Capacity	Sample container	Rotor Cat. No.
50	6	50 ml conical tubes	RH6-50
12	10	15 ml conical tubes	RH10-15
3.5	10	5 ml microcentrifuge tubes	RH10-15
1.2-1.6	40	1.5-2.0 ml microcentrifuge tubes	RH40-11
1.2-1.6	64	1.5-2.0 ml microcentrifuge tubes	RH64-11
1.2-1.6	120	1.5-2.0 ml microcentrifuge tubes	RH120-11
15	8	15 ml Corex™ plastic tubes	RH8-17.5
10	8	18 x 100, 17 x 95, or 16 x 100 mm glass or plastic tubes	RH8-18
8	32	1.5-2.0 ml microcentrifuge tubes	RH32-13
4	40	1.5-2.0 ml glass or plastic tubes	RH40-12
4	72	1.5-2.0 ml glass or plastic tubes	RH72-12
0.3	100	0.4 ml glass or plastic tubes	RH100-6
0.3	100	0.5 ml glass or plastic tubes	RH100-8
80	4	100 ml pear-shaped flasks	RH4-100
2.4	12	4 ml vials	RH12-20
16	12	20 ml scintillation vial	RH12-28
3	24	1 4 ml dram vial or 15 x 45 mm vials	RH24-15
5.6	24	18 x 52 mm scintillation vial	RH24-18
2	60	12 x 32 or 12 x 40 mm vials	RH60-12-40
--	2	Shallow well plates	RH2MP
--	2	Deep well plates	RHDW2MP*†
--	6	Shallow well plates	RHSW6MP*

\* Not available for the Savant SpeedVac SPD1030 Vacuum Concentrator

† Can be used to upgrade to a Savant SpeedVac PRO Rotor Kit



Savant RH24-15 Medium Capacity Rotor



Savant RH40-11 Medium Capacity Rotor

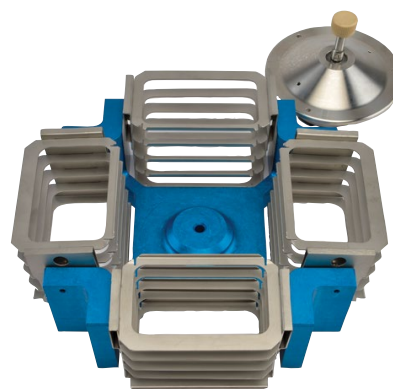


**Large capacity rotors compatible with Savant SpeedVac SPD210 and SPD2030 Vacuum Concentrators.**  
**All large capacity rotors are also compatible with the Savant SpeedVac SPD300DDA Vacuum Concentrator**  
**when used with a Thermo Scientific RAD200 Adapter.**

Working volume (ml)	Capacity	Sample container	Rotor Cat. No.
12	10	50 ml conical tubes	RH12-29
40	48	50 ml conical tubes	RH48-50U
12	52	15 ml conical tubes	RH52-15
12	30	15 ml conical tubes	RH60-17-100
3.5	30	5 ml microcentrifuge tubes	RH60-17-100
1.5	200	1.5 -2.0 ml microcentrifuge tubes	RH200-12
4	200	13 x 100 mm glass or plastic tubes	RH200-12
40	12	28 x 150 mm glass or plastic tubes	RH12-29
40	32	18 x 150 or 16 x 125 mm glass or plastic tubes	RH32-18-150
12	48	16 x 125 mm or 18 x 125 mm glass or plastic tubes	RH48-18-125
24	88	16 x 125 mm glass or plastic tubes	RH88-16-125
80	8	100 ml pear-shaped flasks	RH8-200
3	192	1 4 ml dram vial or 15 x 45 mm vials	RH192-15
16	50	20 ml scintillation vial	RH50-28-60
--	12	Shallow well plates	MPTR12-210
--	4	Deep well plates	MPTR8-210

### Savant rotor upgrade kits

The Savant PRO Rotor Kits are an alternative to traditional rotors. This highly versatile rotor system consists of a four-position rotor along with mix-and-match carriers and blocks. This system can be used with Savant SpeedVac SPD210, SPD2030, and SPD300 Large Volume Vacuum Concentrators.



**Savant PRO-50 Rotor Kit**

### Savant PRO rotor systems

Description	Tubes	Cat. No.
Single-shelf, heavy duty rotor kit, consisting of UPR-4A Rotor, UPC-1 Carrier Set and SUMAX 400 Upper Magnetic Assembly	See PRO-Rotor Components table for compatible blocks	PRO-10 Rotor Kit
Single-shelf, heavy duty rotor kit, consisting of UPR-4A Rotor, UPC-2 Carrier Set and SUMAX 400 Upper Magnetic Assembly	8 deep well plates	PRO-20 Rotor Kit
Single-shelf, heavy duty rotor kit, consisting of UPR-4A Rotor, UPC-5 Carrier Set and SUMAX 400 Upper Magnetic Assembly	20 shallow well plates	PRO-50 Rotor Kit

## Savant PRO rotor blocks

Working volume (ml)	Capacity	Sample container	Rotor Cat. No.
1.2-1.6	25	1.5 ml microcentrifuge tubes	RBA25-11-39
--	126	6 x 32 mm glass or plastic tubes	RBA126-6-32
8	35	13 x 100 mm glass or plastic tubes	RBA35-13-100
12	24	16 x 25 mm glass or plastic tubes	RBA15-16-125
5	24	17 x 60 mm glass or plastic tubes	RBA24-17-60
12	24	16 x 100 mm glass or plastic tubes	RBA24-16-100
12	24	15 ml conical tubes	RBA24-16-100
40	6	50 ml conical tubes	RBA6-30-115
4	12	20 ml scintillation vials**	RBA12-28-58
4	24	19 x 65 mm flat-bottom vials	RBA24-19-65
2	54	12 x 32 mm vials	RBA54-12-32
3	24	1 4 ml dram or 12 x 45 mm vials**	RBA24-15-45
--	--	100 ml round or flat-bottom flask	RBA2-FLSK-100
--	--	3 ml beaker	RBA24-17-31

\*\* Requires Savant RHDW2MP Rotor for use

## Savant PRO rotor components

Component	Capacity	Cat. No.
UPC Carrier	1 shelf, set of 4 carriers, 4 shallow well plats, 4 deep well plates, 4 rotor blocks for vials and tubes	UPC-1
UPC Carrier	2 shelf, set of 4 carriers, 8 shallow well plates, 8 deep well plates	UPC-2
UPC Carrier	5 shelf, set of 4 carriers, 20 shallow well plates	UPC-5
Universal Plate	4 position swing-out horizontal universal plate rotor for UPC carriers	FPR-4A
Magnetic Assembly	Magnetic assembly required for use with individually assembled carrier blocks and carriers	SUMAX400



Savant UPC-1 Carrier



Savant FPR-4A Universal Plate



Savant PRO-10 Rotor Kit

## Savant SpeedVac PRO Rotor components

Component	Description	Cat. No.
UPC carrier	1 shelf, set of 4 carriers, 4 shallow well plats, 4 deep well plates, 4 rotor blocks for vials and tubes	UPC-1
UPC carrier	2 shelf, set of 4 carriers, 8 shallow well plates, 8 deep well plates	UPC-2
UPC carrier	5 shelf, set of 4 carriers, 20 shallow well plates	UPC-5
Universal plate	4 position swing-out horizontal universal plate rotor for UPC carriers	FPR-4A
Magnetic assembly	Magnetic assembly required for use with individually assembled carrier blocks and carriers	SUMAX400

## Additional Savant SpeedVac Vacuum Concentrator accessories

Accessory	Cat. No.
<b>Solutions</b>	
CryoCool heat transfer fluid, 1 L bottle	SCC1
CryoCool heat transfer fluid, 5 L bottle	SCC5
<b>Parts and filters</b>	
Glass condensation flask	GCF400
Glass condensation flask cover	FC400
Tubing pack	UTP-TYG
Mist filter replacement cartridge	MF190
Vacuum pump oil recirculate / filter used on all VLP pumps	VPOF-110
Oil-mist exhaust filter	EMF-10
LyoPump for aggressive solvents	VLP195FD
Recirculating oil filter for use with acids or DMSO/DMF	VPOF110
Muffler (OME190 Oil Mist Eliminator) two oil filters	MF190
<b>Measurement and storage</b>	
Digital vacuum gauge	DVG50-UNV
Deluxe cart	CC120DX

Find out more at [thermofisher.com/speedvac](https://thermofisher.com/speedvac)

This product is intended for General Laboratory Use. It is the customer's responsibility to ensure that the performance of the product is suitable for customers' specific use or application. © 2019-2020 Thermo Fisher Scientific Inc. All rights reserved. All trademarks are the property of Thermo Fisher Scientific and its subsidiaries unless otherwise specified. S-RVTUVS-E 0320