

New cell imaging system

Introducing the EVOS FL Auto 2 Imaging System

Bring high performance and fast automated imaging right to your lab bench with the new Invitrogen™ EVOS™ FL Auto 2 Imaging System. This system has been designed with advanced capabilities to simplify demanding cell-based imaging applications such as live-cell imaging, image tiling, and Z-stacking, so researchers can focus on their data rather than instrument operation.

Features

- **Speed**—scan a 96-well plate in 3 fluorescent channels in less than 5 minutes
- **Flexibility**—customize the system with more than 20 user-changeable LED light cubes, dual cameras (monochrome and color), a variety of objectives ranging from 1.25x to 100x, and multiple vessel holders
- **Time-lapse live-cell imaging**—option for precise control of temperature, humidity, and gases for normoxic or hypoxic conditions allows a wide range of biological studies under physiological conditions with an onstage incubator
- **Area view**—move rapidly and seamlessly between low-magnification, single-field mode and high-magnification scan mode to easily define and capture the area of interest
- **Automation**—time-saving features such as autofocus, rapid stage movement, and automated routines help reduce time to complete experiments, allowing high throughput, high data quality, and improved experimental reproducibility
- **Data analysis**—optional advanced software package for quantitative and statistical analysis

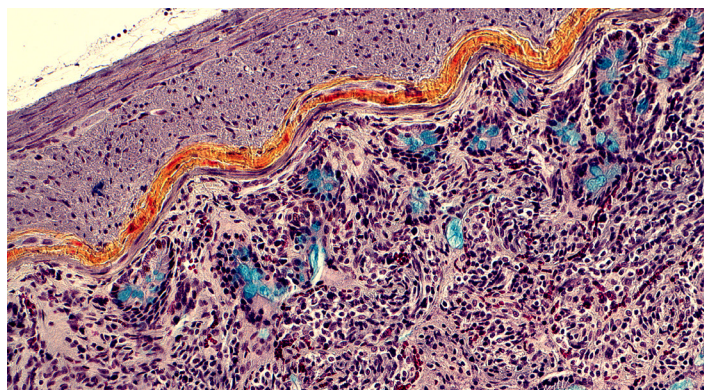


Proactive instrument monitoring

The Remote Monitoring and Diagnostics Service allows our support teams to monitor critical operating parameters and provide peace of mind that your unit is functioning as designed.

Smart-start installation and training

A dedicated installation and training program will get you up and running in just one day. One of our dedicated experts comes to your site to provide hands-on workflow training and make sure your lab is quickly enabled to utilize the powerful instrument features to maximize productivity.



FFPE section of rat intestine tissue labeled with the Invitrogen™ Click-iT™ EdU Colorimetric IHC Detection Kit combined with Movat's pentachrome stain to show proliferating cells. Image was collected on the EVOS FL Auto 2 Imaging System using the color camera and 20x objective.

EVOS FL Auto 2 Imaging System specifications

Attribute	Detail
Illumination	Adjustable-intensity LED light cubes (>50,000-hour life per light cube)
Fluorescence channels	Simultaneously accommodates 4 fluorescence cubes plus bright-field imaging. Broad selection of standard and specialty light cubes (more than 20 to choose from)
Contrast methods	Fluorescence and transmitted light (bright-field and phase-contrast)
Objective capacity	5-position; front-mounted control
Objectives (not included)	Wide selection of high-quality, long working distance (LWD), and coverslip-corrected objectives ranging from 1.25x to 100x
Condenser	60 mm LWD condenser, 4-position turret with a clear aperture and three phase annuli
Stage	Motorized X/Y scanning stage; travel range 120 x 80 mm with submicron resolution. Drop-in inserts to receive vessel holders, and lockdown holders to fix sample in place during long scans
LCD display	23 inch high-resolution touch-screen color monitor (also fully controllable via mouse); 1,920 x 1,080 pixel resolution
Cameras (dual option)	High-sensitivity 1.3 MP CMOS monochrome camera with 1,328 x 1,048 pixels; high-sensitivity 3.2 MP CMOS color camera with 2,080 x 1,552 pixels
Captured images	16-bit monochrome TIFF or PNG; 8-bit per channel TIFF, PNG, or JPG; time-lapse AVI
Dimensions (L x W x H)	46 x 33 x 36 cm (18 x 14 x 13 inch)
Weight	16 kg (35 lb.)

Common light cubes

Light cube	Excitation (nm)	Emission (nm)	Common compatible dye
DAPI	357/44	447/60	DAPI, Hoechst™ stain, BFP
TagBFP	390/18	447/60	TagBFP
CFP	445/45	510/42	eCFP, Lucifer Yellow™, Evans Blue
GFP	470/22	510/42	GFP, Alexa Fluor™ 488, SYBR™ Green, FITC
YFP	500/24	524/27	eYFP, acridine orange + DNA
RFP	531/40	593/40	RFP, Alexa Fluor™ 546, Alexa Fluor™ 555, Alexa Fluor™ 568, Cy®3, MitoTracker™ Orange, Rhodamine Red™, DsRed
Texas Red™	585/29	624/40	Texas Red™, Alexa Fluor 568, Alexa Fluor™ 594, MitoTracker™ Red, mCherry, Cy®3.5
Cy® 5	628/40	692/40	Cy5, Alexa Fluor™ 647, Alexa Fluor™ 660, DRAQ5™
Cy® 5.5	655/46	794/16	Cy5.5, Alexa Fluor 660, Alexa Fluor™ 680, Alexa Fluor™ 700
Cy® 7	710/40	775/46	Cy7, IRDye™ 800CW

For more information or to request a demo, please go to thermofisher.com/evosflauto2

ThermoFisher
SCIENTIFIC