

# Spend less time western blotting

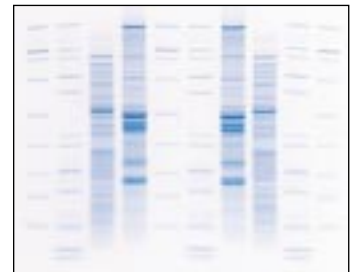


8:25 am  
Start

## Run gels in 35 minutes

using **NuPAGE® Novex Gels:**

- 35-minute run time
- One-year shelf life
- Excellent resolution
- Efficient transfers



NuPAGE® Novex 4-12% Bis-Tris Gel



9:00 am

## Transfer gels in 1 hour

using the **XCell II™ Blot Module**, which slips easily into the XCell SureLock™ Mini-Cell:

- Fast transfer times
- Simple set-up
- Never leaks
- Even transfers



XCell II™ Blot Module



10:00 am

## Detect proteins in 3 hours

using the **WesternBreeze® Kits** for Chromogenic or Chemiluminescent detection:

- Fast, easy-to-use
- Low background
- High sensitivity and long-lasting signals
- Anti-Mouse, Anti-Rabbit, and Anti-Goat Kits available

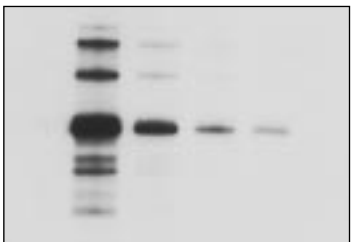


WesternBreeze® Immunodetection Kit



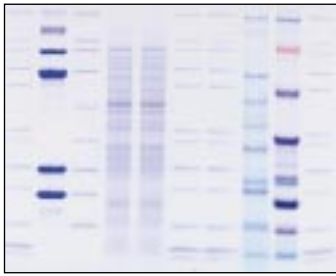
1:00 pm  
Finish

## Get great results in just 5 hours!



Blot of human IgG detected with the WesternBreeze® Chemiluminescent Kit

To learn more, call Invitrogen today **1 800 955 6288**



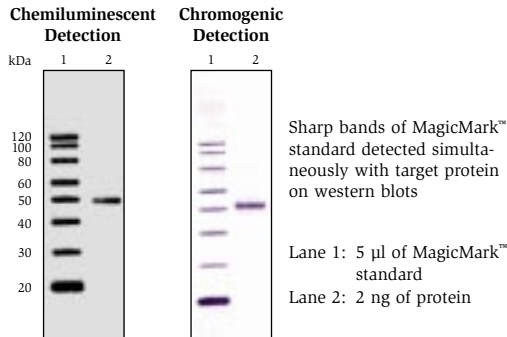
NuPAGE® Novex 4-12% Bis-Tris Gel run w/MES SDS Buffer (35-minute run time)

## NuPAGE® Pre-Cast Gels

### Reliable, high-performance protein separations

NuPAGE® pre-cast gels take SDS-PAGE to the next level with a patented neutral pH electrophoresis system that offers significant advantages over traditional SDS-PAGE buffer systems. With NuPAGE® gels you'll get:

- 12-month shelf life
- Accurate results time after time
- Excellent transfer efficiency
- Fastest run time



## MagicMark™ Western Protein Standard

### For easy and accurate western blot analysis

MagicMark™ standard lets you visualize standard bands simultaneously with your target protein using the same protocol. Get sharp bands and precise molecular weight estimation directly on blots. MagicMark™ standard offers:

- Direct visualization of standard bands
- Accurate molecular weight estimation
- Convenient, ready-to-use format

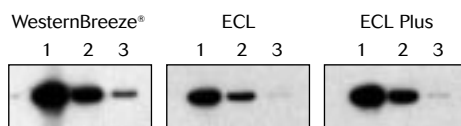


## Pre-Cut Membrane/Filter Paper

### The only pre-cut membrane/filter paper sandwiches for simplifying blotting

The Novex® pre-cut, pre-assembled membrane/filter paper sandwiches make setting up blotting procedures easy and convenient. The pre-cut membrane offers:

- Pre-cut membrane/filter paper that perfectly fit Novex® mini-gels
- Convenient assembly of the gel for blotting
- Nitrocellulose, PVDF, or nylon membranes to meet your needs



A 53 kD protein containing a V5 epitope was separated on a NuPAGE® 4-12% gel then transferred to a Novex® PVDF membrane. Blots were probed with the Anti-V5 Antibody and detected with anti-mouse versions of the indicated system. Blots were exposed for 2 minutes on the same piece of film.

Lane 1: 20 ng protein  
Lane 2: 2 ng protein  
Lane 3: 200 pg protein

## WesternBreeze® Immunodetection Kits

### The fast and easy-to-use western blot detection

The WesternBreeze® Kits provide a complete set of reagents for ultra-sensitive detection of primary antibodies immobilized on nitrocellulose or PVDF membranes. Develop with your choice of either a chromogenic or chemiluminescent substrate. WesternBreeze® Kit offers:

- Low background and strong, long-lasting signals
- Complete detection kit—everything is included but your membrane and primary antibody
- One simple, easy protocol
- Ready-to-use reagents

The XCell SureLock™ Mini-Cell is covered under U.S. Patent No. 6,001,233. The NuPAGE® System is covered under U.S. Patent Nos. 6,059,948, 5,578,180, 5,922,185, EP0753142 and corresponding patents in other countries. For research purposes only. Novex®, XCell SureLock®, NuPAGE®, WesternBreeze®, MagicMark™ and XCell II™ are trademarks of Invitrogen. ECL and ECL Plus are trademarks of Amersham Biosciences Limited. Printed in the U.S.A. ©2002 Invitrogen Corporation. Reproduction forbidden without permission.



#### Corporate headquarters:

1600 Faraday Avenue • Carlsbad, CA 92008 USA • Tel: 760 603 7200 • Fax: 760 602 6500 • Toll Free Tel: 800 955 6288 • E-mail: tech\_service@invitrogen.com • www.invitrogen.com

#### European headquarters:

Invitrogen Ltd, 3 Fountain Drive • Inchinnan Business Park • Paisley PA4 9RF, UK • Tel (Free Phone Orders): 0800 269 210 • Tel (General Inquiries): 0800 5345 5345  
Fax: +44 (0) 141 814 6260 • E-mail: eurotech@invitrogen.com