

# The ArcturusXT Laser Capture Microdissection (LCM) System

Microgenomics is within your reach



Exclusive to our microdissection platform, the Applied Biosystems™ ArcturusXT™ dual laser LCM System has a solid-state infrared (IR) laser and an ultraviolet (UV) cutting laser that offer a gentle cell-capture method, preserving biomolecular integrity. This methodology makes the system ideal for single cells and small numbers of cells.

Having pioneered LCM technology, we offer comprehensive support and system knowledge that extends across the entire microgenomics workflow, including real-time PCR, Sanger and next-generation sequencing (NGS), and digital PCR. State-of-the-art LCM is within reach with an ArcturusXT LCM System configured to meet your specific needs.

## A complete microgenomics workflow

Get more from your sample by selecting your cells of interest from a heterogeneous sample. Access the complete solution for microgenomics, from sample selection to genetic analysis, with a system that enables a variety of downstream capabilities, including sequencing by capillary electrophoresis (CE), quantitative PCR, NGS, and digital PCR.

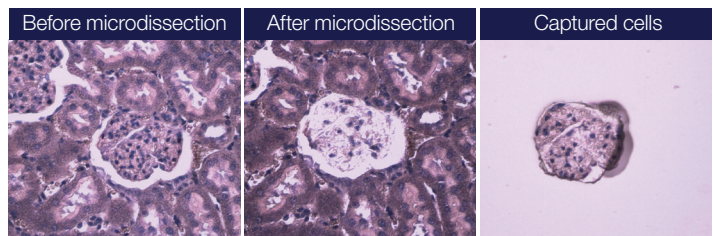
- LCM, in conjunction with NGS, has demonstrated the identity of molecular signatures uncovered from specific cells of interest taken from heterogeneous tumor tissue samples

[Download app note here](#)

- The ArcturusXT LCM dual laser system ensures gentle sample treatment, enabling the study of gene expression profiles with the UV laser allowing sample cutting, while the gentle IR laser allows for capturing while maintaining sample integrity

[Download app note here](#)

- LCM, in conjunction with digital PCR, enables precise measurement and copy number variation analysis of typically less than 1- to 2-fold differences within FFPE tissue samples



Rat kidney FFPE section, Paradise™ Plus Reagent stain, microdissected using IR-LCM only.

## ArcturusXT LCM System benefits:

- **System flexibility**—different sample preparations and slide types are accommodated with the dual laser system; the modular stage insert handles petri dishes, whole-mount slides, and caps
- **Affordability**—a cost-effective solution for LCM
- **Simplicity, ease of use**—fully automated, computer-guided sample selection with simplified software and graphical user interface
- **Custody of sample maintained**—retain the sample's spatial orientation

## The modular design of this system provides the ability to:

- Add a fluorescence option to work with fluorescently labeled cells
- Add a second camera that will enable capture of higher-resolution images
- Add a second monitor to allow advanced sample manipulation, such as marking sections of a sample

## Ordering information

Product	System components	Cat. No.
ArcturusXT Laser Capture Microdissection (LCM) System	LED tower Nikon TI microscope base Dell XE2 monitor Dual laser system	A26818

Find out more at [thermofisher.com/lcm](http://thermofisher.com/lcm)

**ThermoFisher**  
SCIENTIFIC