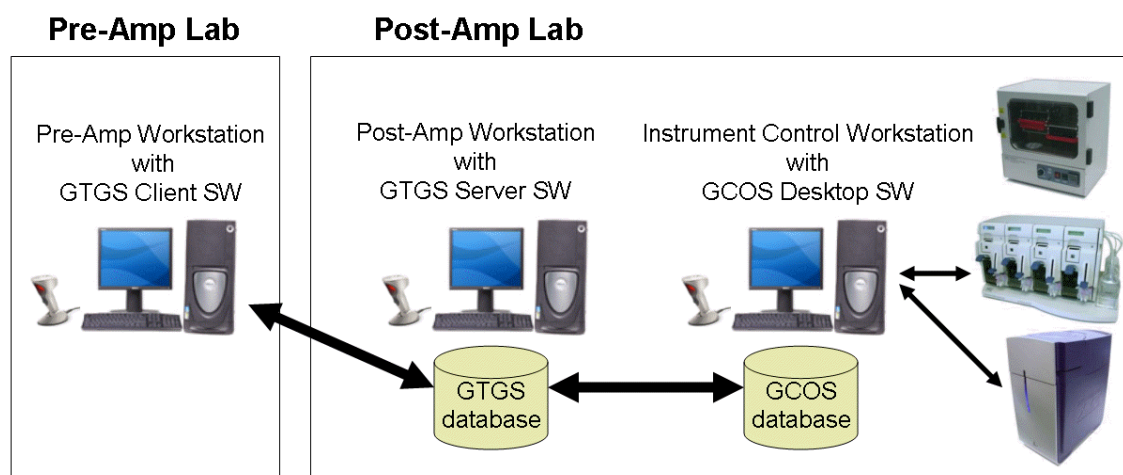


GTGS 1.5 Installation Verification - Technical Note

This procedure verifies installation and proper configuration of Affymetrix GeneChip® Targeted Genotyping Analysis Software (GTGS) on the Pre-Amp and Post-Amp Lab Workstations, and proper communication with the GCOS Instrument Control Workstation. It is assumed that GTGS settings have already been modified by Affymetrix to communicate with GCOS.

This procedure should also be followed to verify system integrity whenever there are network configuration or security changes to the GTGS or GCOS computers.

This procedure applies to the standard 3-computer configuration, each of which is connected to the local area network and has a barcode reader:



This procedure does not describe how to test all the functions of GTGS, only those that interact with the other computers of the system. It is assumed that if these major functions work, the other components of the software will also work.

System configuration worksheet, for your records

Who completed this worksheet _____
Date worksheet was completed _____

GCOS Instrument Control Workstation

Computer name (on the network) _____
Serial number _____
GCOS version _____
Computer Administrator name _____
Administrator password _____

GTGS Post-Amp Lab Workstation

Computer name (on the network) _____
Serial number _____
GTGS version _____
Authentication mode (NT or DB)(*DB = SQL authentication*) _____
Computer Administrator name _____
Administrator password _____
SQL "SA" password _____

GTGS Pre-Amp Lab Workstation

Computer name (on the network) _____
Serial number _____

Is the Windows Firewall on? _____

Are you using a Proxy server? _____

Antivirus policy _____

Windows updating policy _____

GTGS Installation Verification Procedure

NOTE: The system is not considered verified unless you can CIRCLE “Yes” to all the checkpoints. Unless otherwise stated, do not proceed to the next checkpoint until you can answer “Yes” to the current checkpoint.

Yes No 1. Turn on the GCOS and Lab computers. If they’re already on, restart them all.

Post-Amp Lab Workstation Verification

Yes No 2. Log into Microsoft Windows as a user on the computer's domain (NOT Administrator on “this computer”).

Yes No 3. Is there a “GeneChip TG Software” Microsoft Internet Explorer shortcut on the Desktop?

Yes No 4. Double-click on the GeneChip TG Software shortcut. Does a web page open containing the Affymetrix logo?

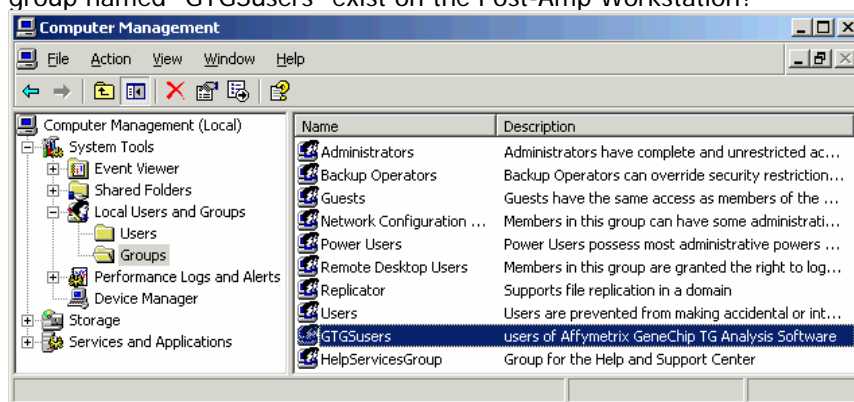
NOTE on the following steps: By default, GTGS is configured for “DB authentication”, which means that when GTGS launches, the user is asked to select their name from a pull-down menu. If this is your configuration, do steps number 5 and 6 and then skip to step number 11 when completed. However, if you switched the application to use Windows NT Authentication (by following the instructions in the document *Windows Authentication for GTGS Technical Note*), then skip steps number 5 and 6 and continue with step number 7.

Yes No 5. (DB only) Click on the [GeneChip Targeted Genotyping Analysis Software](#) link in the GeneChip TG Software web page. Does a pull-down menu appear asking for users to select their name?

Note: Another dialog may appear the first time the application is launched, asking whether to integrate the application into the desktop. If it does, select **No** in the dialog.

Yes No 6. (DB only) Select the user **admin** and click **OK**. Does the application finish starting up without any error messages?

Yes No 7. (NT only) Navigate to Start Menu > right-click on My Computer > Manage. Then navigate to System Tools > Local Users and Groups > Groups. Does a local users group named “GTGSusers” exist on the Post-Amp Workstation?



- Yes No 8. (NT only) Double-click on GTGSusers local user group. Does it contain the domain users that will use GTGS?
- Yes No 9. (NT only) Log out of Windows, and log in as an authorized NT user in the "GTGSusers" group. Click on the [GeneChip Targeted Genotyping Analysis Software](#) link in the GeneChip TG Software web page.

Note: If a security warning appears, click **Start** to continue launching the application. If the application is running with a Trial license, click **No** when asked to enter the permanent license and click **Accept** in the End User License Agreement.

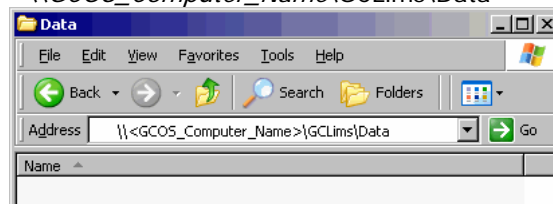
Does main application window appear?

- Yes No 10. (NT only) Log out of Windows, and log in as an NT user who is NOT a member of "GTGSusers". Launch GeneChip Targeted Genotyping Analysis Software. Does the following error message appear?:
"java.sql.SQLException: [DataDirect][SQLServer JDBC Driver]Login failed for user '<username>'. Exception"

Dismiss this message, and then log out of Windows. Log in as an authorized NT user in the "GTGSusers" group.

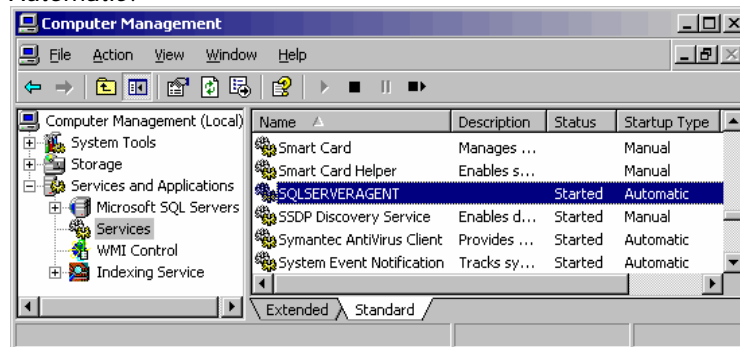
- Yes No 11. Verify that an authorized user can still access the shared GCOS data folder: From the Windows desktop, open any folder window, and type the following into the address bar (using the actual GCOS computer name):

\\GCOS_Computer_Name\GCLims\Data



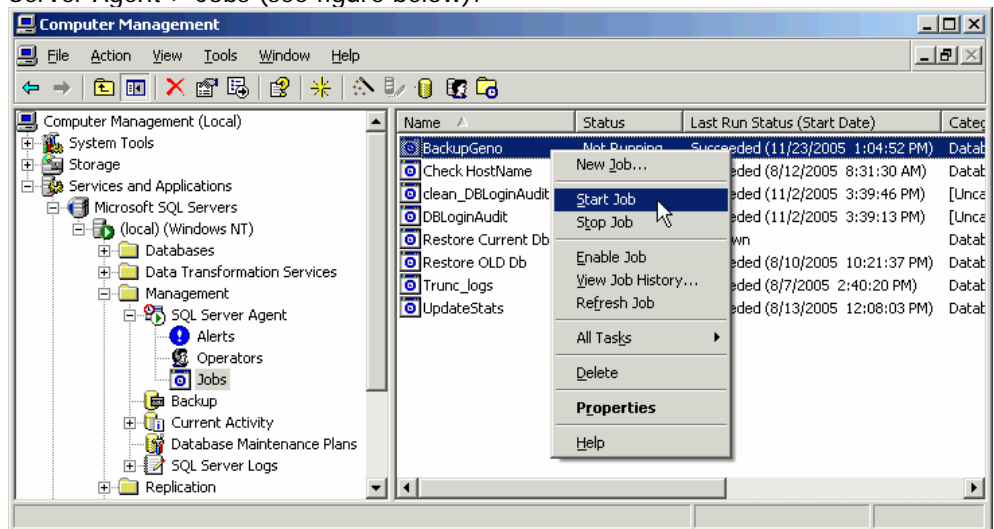
Press return. Can you get access to this folder without any error messages?

- Yes No 12. Log into the Post-Amp Workstation as a user with local administrator privileges (like "Administrator"). Navigate to Start Menu > right-click on My Computer > Manage. Using the screenshot below as a guide, navigate to Services and Applications > Services > SQLSERVERAGENT service. Is the Status *Started*, and the Startup Type *Automatic*?



Keep this window open

- Yes No 13. Still within the Computer Management window, navigate to Services and Applications > Microsoft SQL Servers > (local) (Windows NT) > Management > SQL Server Agent > Jobs (see figure below):



Right-click on the **BackupGeno** job, and select **Start Job**. When the job starts, refresh the window by right-clicking on the window containing this job and selecting **Refresh**. When the Status for **BackupGeno** is "Not Running," does the Last Run Status report "Succeeded"?

Close the Computer Management window

- Yes No 14. Open Microsoft Notepad on the Post-Amp Workstation, and scan in an array barcode, or any other barcode that's available. Is the cursor blinking *on the next line, right below the barcode*?

Pre-Amp Lab Workstation Verification

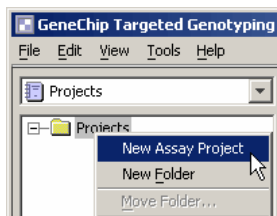
- Yes No 15. Log into Windows as a domain user who should have access to GTGS. Is there a "GeneChip TG Software" Internet Explorer shortcut on the Desktop?
- Yes No 16. Double-click on the GeneChip TG Software shortcut. Does a web page with the Affymetrix® logo open having?
- Yes No 17. Double-click on the [GeneChip Targeted Genotyping Analysis Software](#) link in the GeneChip TG Software web page.

Note: If a security warning appears, click **Start** to continue launching the application. If the application is running with a Trial license, click **No** when asked to enter the permanent license and click **Accept** in the End User License Agreement.

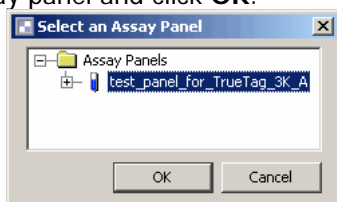
Does the application load directly to the main window?

Yes No 18.

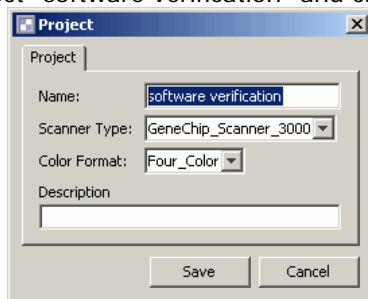
Within the application, select the Projects item in the pull-down menu below the File menu. Right-click on the Projects folder in the tree and select **New Assay Project**.



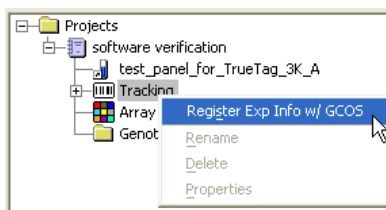
Select a test assay panel and click **OK**.



Name the project "software verification" and click **Save**.



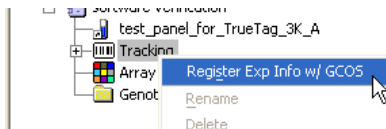
Expand the software verification project, and right-click on the Tracking section. See if the "Register Exp Info w/ GCOS" operation option appears (but do not select it):



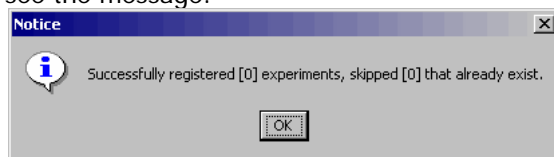
Is a GCOS operation available? (if not, the "GCOS.properties" file on the Post-Amp Workstation hasn't been properly configured, and you should not continue.)

Yes No 19.

Right-click on Tracking section of the same project and select **Register Exp Info w/GCOS**.



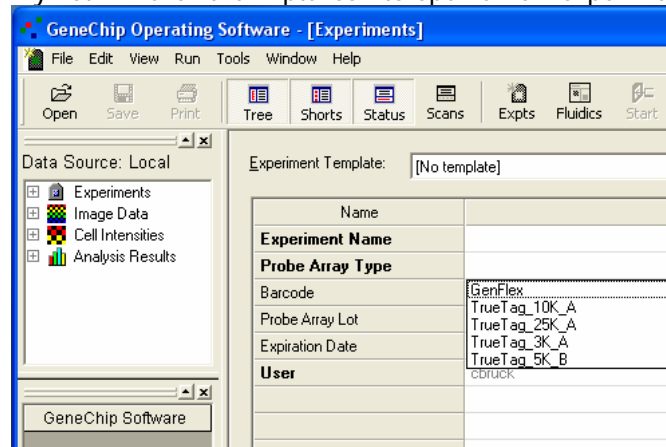
Do you see the message:



- Yes No 20. Open Notepad on the Pre-Amp Workstation, and scan in an array barcode, or any barcode that's available. Is the cursor blinking *on the next line, right below the barcode?*

GeneChip® Instrument Workstation Verification for GTGS

- Yes No 21. From the GCOS Instrument Workstation, launch GCOS from Start Menu > Programs > Affymetrix. Click the Expts icon to open a new experiment window.

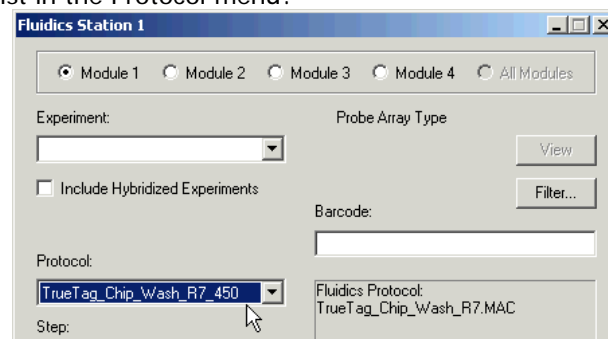


In the Probe Array Types field in this window, does the **TrueTag_3K_A** array type appear in the pull-down menu? It is required for training.

- Yes No 22. Do you see the “MegAllele Processing” tool in the GeneChip Software section of the Shortcut Bar window? You may need to scroll through the tools in this window to find it.



- Yes No 23. Within GCOS, press the Fluidics button (next to Expts). Does the TrueTag protocol exist in the Protocol menu?



- Yes No 24. From the GCOS Workstation, open Start Menu > Programs > Accessories > Notepad. Scan an array barcode into Notepad, or any barcode that's available. Is the cursor blinking at the end of the barcode, *on the same line?*