

# Affymetrix® Laboratory Information Management System (LIMS) 3.0

The Affymetrix® LIMS is a valuable data management addition for the moderate to high throughput GeneChip® analysis laboratory. LIMS was developed to meet our customers' requirements for management of the large amount of experimental information generated using Affymetrix® GeneChip® technology. When using LIMS, you benefit from increased systems flexibility, streamlined user interface integration, enhanced automation, and advances in robust data handling and security.

## Benefits Include

### • Central Data Management

- Enhances data sharing among groups
- Improves data security through managed access
- Protects against data loss when standard archiving techniques are employed
- Enables automation of data analysis
- Increases efficiency and throughput by liberating workstations from analysis tasks
- Insures comparability of results through controlled vocabulary conventions

### • Software Integration

- Affymetrix® Microarray Suite automation support for instrument data capture, primary analysis and storage
- Data Mining Tool for analysis and data mining
- AADM compliant 3rd party vendor and customer analysis tools

### • Open Architecture Flexibility

- Promotes broader range of options for analyzing your data
- Enables automation of analysis and workflow
- Enhances developer support through the use of AADM and the LIMS SDK
- Comprehensive online help
- Links to external data resources

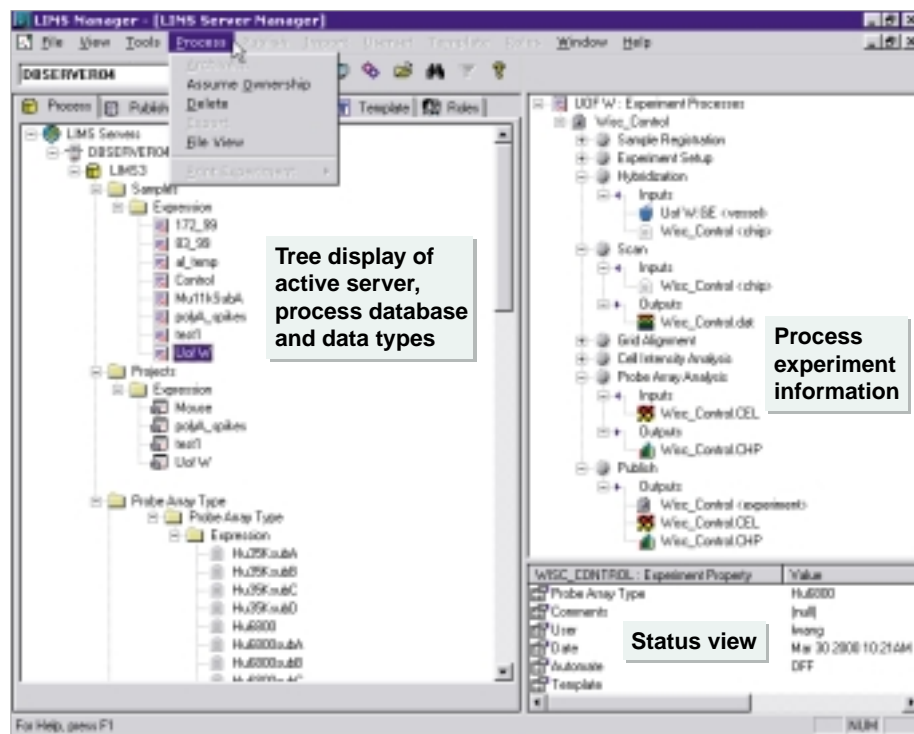
### • Strengthened Data Security

- Process data access governed by user assigned roles within defined groups
- Password protected Publish databases (AADM) for mining
- Data archiving and recovery using commercially available systems

### • Enhanced Systems Choice

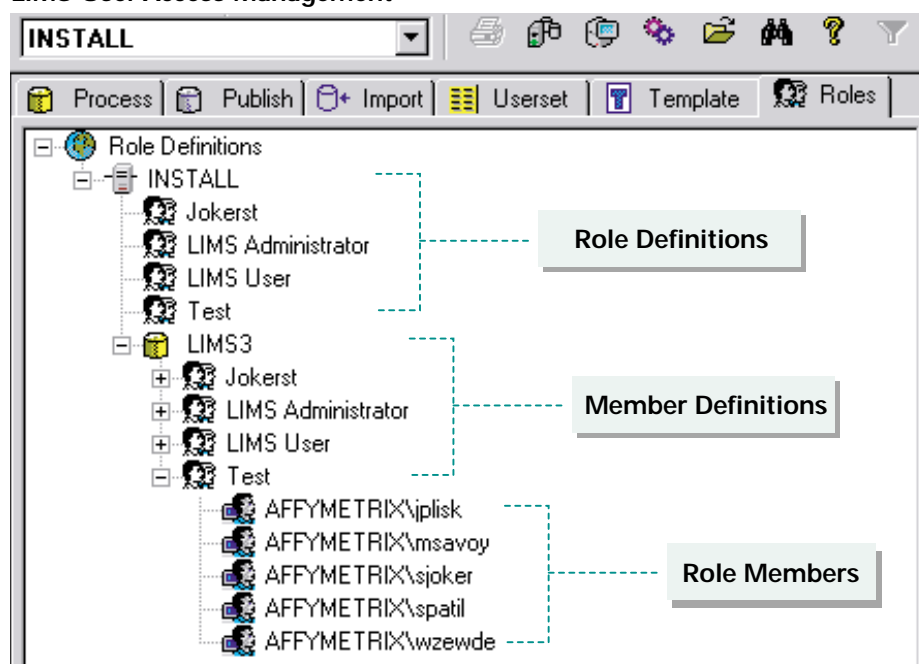
- Supports both Oracle and SQL Server data management systems
- Allows user defined experiment and sample attributes, extending the system to address custom needs

## LIMS Process Management



## SOFTWARE SOLUTIONS

### LIMS User Access Management



### Affymetrix® Analysis Data Model Support

The Affymetrix® LIMS creates Affymetrix® Analysis Data Model (AADM) compliant Publish databases. Alternative software vendors whose tools are AADM compliant are also able to analyze GeneChip® results managed within the LIMS. Affymetrix' commitment to open architecture standards means you are able to select appropriate data analysis and mining tools which best meet your needs.

### Supported Affymetrix Arrays

- All GeneChip® Expression Arrays

### Supported Affymetrix Software

- Microarray Suite 5.0
- Data Mining Tool 3.0
- LIMS Manager 3.0

### Database Management Systems Support Options

- Oracle® 8.1.7 for Microsoft Windows NT® Server with Patches 1 and 3
- Microsoft® SQL Server 2000, Service Pack 1

### Operating System Support

- Windows 2000 SP2

### Hardware Details

#### • Computer Server Type Ia (Dell) (Included with 900253)

- 4 Intel Xeon 700 MHz processors, 2 MB Level 2 cache each
- 4 GB RAM
- 144 GB hard disk space
- 17" monitor, CDROM, keyboard, mouse

#### • Computer Server Type Ib (Dell) (Included with 900355)

- 2 Intel Xeon 1000 MHz processors, 256 kb Level 2 cache each
- 2 GB RAM
- 144 GB hard disk space
- 17" monitor, CDROM, keyboard, mouse

#### • Computer Server Type II (Compaq) (Included with 900254)

- 4 Intel Xeon 700 MHz processors, 2 MB Level 2 cache each
- 4 GB RAM
- 144 GB hard disk space
- 17" monitor, CDROM, keyboard, mouse

#### • Computer Workstation Type II (Dell) (Included with system packages)

- Pentium III 933 MHz processor
- 512 MB RAM
- 40 GB hard disk space
- 21" high resolution monitor, CDROM, DVD ROM, keyboard, mouse

### Ordering Information:

Part No.	Description	Includes
690002	LIMS Server Software	Server software, plus LIMS Manager
900245	Bioinformatics Starter Kit	Above, plus Microarray Suite, Data Mining Tool
900253	Bioinformatics System 1	900245, plus Dell server Ia, Dell workstation
900254	Bioinformatics System 2	900245, plus Compaq server, Dell workstation
900355	Bioinformatics System 1 LITE	900245, plus Dell server Ib, Dell workstation
690014	LIMS Development Server Software	Server software, LIMS Manager Development use only
690015	LIMS Software Development Kit	LIMS Application Programming Interfaces and Documentation
690013	LIMS Development Package	690014, plus 690015
900337	LIMS Development Server System 1	690014, plus Dell server Ia, Dell workstation
900338	LIMS Development Server System 2	690014, plus Compaq server, Dell workstation

### AFFYMETRIX, INC.

3380 Central Expressway  
Santa Clara, CA 95051 USA  
Tel: 1-888-362-2447 (1-888-DNA-CHIP)  
Fax: 1-408-731-5441  
sales@affymetrix.com  
support@affymetrix.com

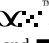

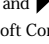
### AFFYMETRIX UK Ltd.,

Voyager, Mercury Park,  
Wycombe Lane, Wooburn Green,  
High Wycombe HP10 0HH  
United Kingdom  
Tel: +44 (0)1628 552550  
Fax: +44 (0)1628 552585  
saleseurope@affymetrix.com  
supporteurope@affymetrix.com

www.affymetrix.com

For research use only. Not for use in diagnostic procedures.

Part No. 700517 Rev 3

©2001 Affymetrix, Inc. All rights reserved. Affymetrix®, GeneChip®, , HuSNP™, Jaguar™, EASI™, MicroDB™, GenFlex™, 417™, 418™, 427™, 428™, Pin-and-Ring™, Flying Objective™, , CustomExpress™, NetAffx™ and  are trademarks owned or used by Affymetrix, Inc. Pentium is a registered U.S. trademark of Intel. Windows NT® is a registered trademark of Microsoft Corporation. Oracle is a registered trademark of Oracle Corporation. Dell is a trademark of Dell Corporation. Software products may be covered by one or more of the following patents: U.S. Patent Nos. 5,733,729; 5,795,716; 5,974,164; 6,066,454; 6,090,555; 6,185,561 and 6,188,783; and other U.S. or foreign patents.

