



Comprehensive approach

Harvest solutions that help strengthen your supply chain and market position

The Applied Biosystems™ harvest panel consists of diagnostic tests for the detection of the most relevant zoonotic pathogens in pigs and ruminants at slaughter. This meat harvest panel gives you the additional data you require to help better protect your supply chain.

Improve quality and efficiency of supply chain

Meat producers do everything in their power to introduce healthy animals in their supply chain. The meat harvest panel helps you to:

- Detect whether animals at the farm have been in contact with unwanted microorganisms
- Verify the biosecurity at the farm
- Take corrective action

Reduce costs

Without comprehensive biosecurity data to mitigate food safety threats, it becomes increasingly difficult to protect your supply chain, business, and customers against harmful food recalls. The meat harvest panel can:

- Help reduce the risk of recalls related to zoonotic agents
- Help ensure that animals reach their slaughter weight earlier, saving feed and medication costs

Increase profit

Positioning your product and satisfying evolving food safety demands are critical to ensuring your profitability in today's competitive global meat market. Our meat harvest panel helps you to:

- Deliver a safer, higher-quality food product to market at a premium price
- Open new market segments

Leading European slaughterhouses have partnered with us to successfully implement the harvest concept within their supply chain, enabling them to reduce their chance of zoonotic-related recalls by 90% and establish a clear competitive advantage.

The numbers

- The top zoonotic pathogens account for \$14 billion in annual lost revenue*
- Average cost of recalls is \$250,000 per 1 million pigs slaughtered per year**
- Slow-growing pigs can cost as much as \$7.50 per pig for additional feed costs alone†

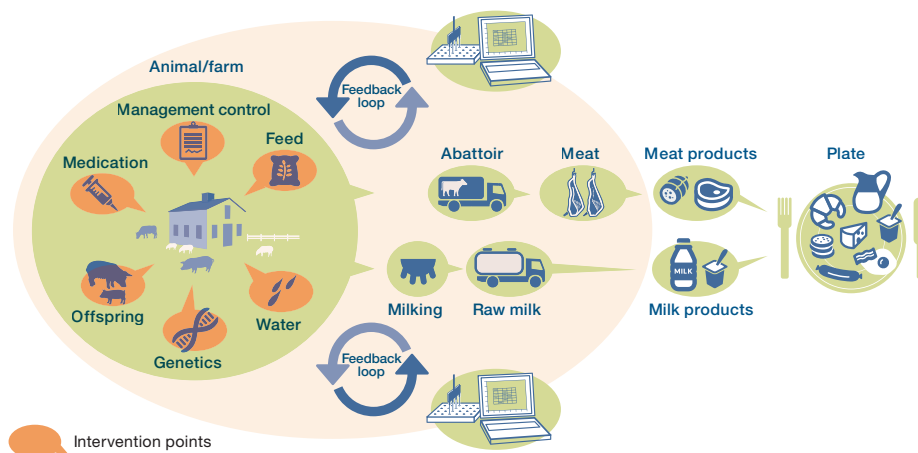
* Estimation by the Centre for Disease Control

** Swiss Re Report & Pozo VF and Schroeder TC (2015) Utah State University Fact Sheet

† Agri-Food and Biosciences Institute (AFBI, 2011), "Does it Pay to Take Pigs to Heavy Slaughter Weights?" www.thepigsite.com

Giving you the additional data you require to help better protect your value chain

- Identify intervention points
- Facilitate implementation of appropriate measures
- Continuously improve the value chain
- Help reduce production costs
- Help protect livestock and consumers in an efficient, effective, and holistic way



Blood samples taken at the abattoir are tested for antibodies against zoonotic pathogens. The results are fed back to the producer and, if needed, corrective measures can be taken at the intervention points. Success is then monitored in every batch delivered to the slaughterhouse. This comprehensive approach supports continuous improvement of the value chain.

Ordering information

Product	Type	Quantity	Cat. No.
Diagnostics for swine			
PrioCHECK Porcine <i>Trichinella</i> Ab Strip Kit	ELISA	5-strip plate kit (450 tests)	7610150
PrioCHECK Porcine <i>Toxoplasma</i> Ab Kit	ELISA	5-strip plate kit (450 tests)	7610230
PrioCHECK Porcine HEV Ab Strip Kit	ELISA	5-strip plate kit (450 tests)	4600010
PrioCHECK Porcine <i>M. avium</i> Plate Kit	ELISA	5-strip plate kit (450 tests)	7610720
PrioCHECK Porc. <i>Salmonella</i> Ab 2.0 Strip Kit	ELISA	5-plate kit (450 tests)	7610660
PrioCHECK Porcine <i>Salmonella</i> Kit	ELISA	50-plate kit (4,500 tests)	7610480
Diagnostics for ruminants			
PrioCHECK Bovine <i>Salmonella</i> Ab Strip Kit	ELISA	5-plate kit (450 tests)	7610620
PrioCHECK <i>S. Dublin</i> Ab Strip Kit	ELISA	5-plate kit (450 tests)	7610640
PrioCHECK Small Rum. <i>Toxoplasma</i> Ab Strip Kit	ELISA	5-plate kit (450 tests)	7610240
PrioCHECK Ruminant <i>T. gondii</i> Serum Plate Kit	ELISA	2-plate kit (180 tests)	ELISATOXO2
VetMAX <i>T. gondii</i> Kit	Real-time PCR	50 tests	TXP50

Find out more at thermofisher.com/harvestsolutions

ThermoFisher
SCIENTIFIC