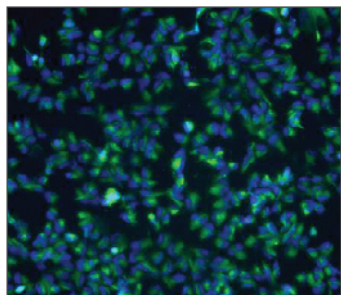


Stem Cells

Tools for Stem Cell Research

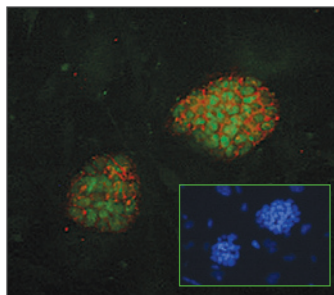
Human Nestin



Human LIF was used at 10ng/ml for culturing human neural stem cells (NSC line I6 1B). After 5 passages cells were characterized by immunocytochemistry using Anti-human Nestin Alexa Fluor[®] 488 (cat. no. 53-9843) at 5 µg/ml. Nearly 100% cells were Nestin positive.

* Image provided courtesy of Xianmin Zeng, Buck Institute in San Francisco, CA

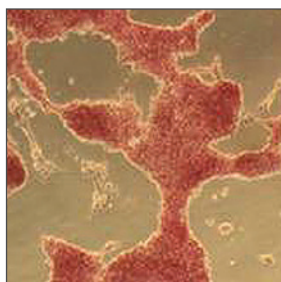
Oct 3/4



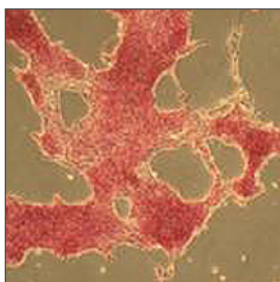
Mouse embryonic stem cells were stained with Anti-mouse/human Oct 3/4 (cat. no. 14-5841) (green), Anti-mouse/human SSEA-1 (cat. no. 14-8813) (red) and DAPI (inset).

* Images provided courtesy of Sean Morrison, University of Michigan.

Recombinant Mouse LIF



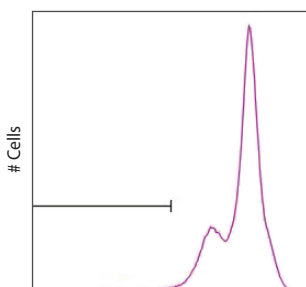
eBioscience[®]



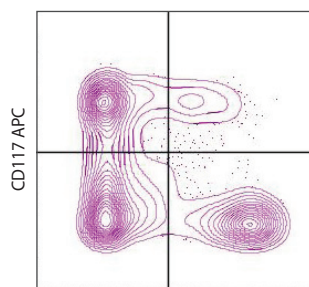
Competitor M

Comparison of eBioscience Mouse LIF (left; cat. no. 34-8521 at 5 ng/ml) and competitor M (right; at 5 ng/mL) for culture of ESC (pluripotency confirmed by Alkaline Phosphatase assay).

Mouse Hematopoietic Lineage Flow Cocktail



Lineage Cocktail eFluor[®] 450



Sca-1 PE

C57Bl/6 bone marrow cells were stained with the Mouse Hematopoietic Lineage Flow Cocktail, Anti-mouse CD117 APC (cat. no. 17-1171) and Anti-mouse Sca-1 PE (cat. no. 12-5981). Viable cells in the lymphocyte gate were used for analysis. Events displayed on the right plot are gated on lineage negative events, as shown on the left histogram.

FEATURING

ANTIBODIES

- CD34
- CD59 (Protectin)
- CD117/c-Kit
- CD133 (Prominin-1)
- CD150
- CD324 (E-Cadherin)
- Musashi
- NCAM (CD56)
- Nestin
- Notch-1
- OCT 3/4
- Sca-1 (Ly6A/E)
- SSEA-1
- TNFRSF8 (CD30)
- TRA-1-60
- TRA-1-81
- Thy1.1 (CD90.1)

RECOMBINANT PROTEINS

- B18R
- BMP-2
- FGF acidic (FGF-1)
- FGF basic (FGF-2)
- G-CSF
- LIF
- SCF
- SHH

SUPPORT PRODUCTS

- Accumax[™] Cell Aggregate Dissociation Medium
- Accutase[™] Enzyme Cell Detachment Medium

Stem Cell Reagents

Specificity	Clone	Applications	Cat. No.	Purified	Functional Grade™ Purified	Biotin	eFluor® 450	eFluor® 605NC	eFluor® 650NC	eFluor® 660	FITC	Alexa Fluor® 488	PE	PE-Cy5	PerCP-eFluor® 710	PE-Cy7	PerCP-Cy5.5	APC	Alexa Fluor® 647	Alexa Fluor® 700	APC-eFluor® 780
Human Stem Cell Markers																					
CD34	4H11	FC, WB	0349	•		•	•		•		•		•		•	•		•	•		
CD38	HB7	FC	0388	•		•			•		•		•		•	•		•		•	
CD44	IM7	FC, IHC, FA, IP, WB	0441	•	•	•	•	•			•		•		•	•		•		•	•
CD59 (Protectin)	MEM-43 & OV9A2	FC	0597 & 0596								•		•					•			
CD117/c-Kit	YB5.B8	FC, IHC/F, IP	1179	•		•					•		•		•	•		•			
CD123	6H6	FC, IHC	1239	•		•	•		•		•		•		•	•		•			
CD144 (VE-Cadherin)	16B1	FC, WB, IHC/P	1449	•		•					•		•		•			•		•	
CD150	A12 (7D4)	FC, IHC, FA	1509	•	•	•					•		•								
CD244	C1.7 & DM244	FC, FA, IP, WB	5837 & 5838	•	•	•					•		•					•		•	
CD324 (E-Cadherin)	DECMA-1	ELISA, FA, FC, IHC, IP, WB	3249	•	•	•									•					•	
Nanog	h.Nanog	FC, IHC, WB	9896	•		•					•									•	
Musashi	14H1	ICC, IHC, WB	9896	•							•										
NCAM (CD56)	CMSSB & MEM-188	FC, IHC, IP	0567 & 0569	•	•	•					•		•		•				•		
Nestin	10C2	IHC/P, IH/F, WB	9843	•							•		•								
OCT 3/4	EM92	ICF, FC, WB, IHC	5841	•							•		•							•	
SSEA-1	MC-480	FC, IHC, IP	8813	•		•		•			•		•							•	
SSEA-3	MC-631	FC, IHC	8833	•		•		•			•		•								
SSEA-4	MC-813-70	FC, IHC	8843	•		•					•		•								
Thy-1 (CD90)	5E10	FC, WB, IHC/F, IP	0909	•		•					•		•	•	•	•	•	•			
TNFRSF8	Ber-H2	IHC, FC	0309	•									•								
TRA-1-60	Tra-1-60	FC, IHC, IP, WB	8863	•		•							•								
TRA-1-81	Tra-1-81	FC, WB, IHC	8883	•		•							•						•		
Mouse Stem Cell Markers																					
CD34	RAM34	FC, IHC/F, IHC/P	0341	•	•	•	•		•		•		•						•	•	
CD38	90	FC, IHC, FA	0381	•	•	•					•		•		•	•		•		•	
CD44	IM7	FC, IHC, FA, IP, WB	0441	•	•	•	•	•			•		•		•	•		•		•	•
CD48	HM48-1	FC, FA, IP, WB	0481	•	•	•					•		•					•			•
CD117/c-Kit	ACK2 & 2B8	FC, IHC/F, IP, WB	1172	•	•	•					•		•	•	•	•		•		•	•
CD133 (Prominin-1)	13A4	FC, IHC, IP, WB	1331	•	•	•					•		•		•			•			
CD144 (VE-Cadherin)	BV13	FC, IHC, FA, WB, IP	1441	•	•	•	•				•		•		•			•		•	
CD150	9D1 & mShad150	FC, FA	1501 & 1502	•	•	•					•		•	•	•			•			
CD324 (E-Cadherin)	DECMA-1	ELISA, FA, FC, IHC, IP, WB	3249	•	•	•									•					•	
Nanog	eBioMLC-51	ICFC, WB	5761	•							•									•	
Nestin	Rat-401 (4D4)	IHC, WB	5843	•									•								
Notch-1	mN1A	ICFC, IHC, WB	5785	•		•							•								
Notch-4	HMN4-14	FC	5764										•								
OCT 3/4	EM92	ICF, FC, WB, IHC	5841	•							•		•							•	
Pax6	AD2.38	ICC, WB	9914	•																	
SSEA-1	MC-480	FC, IHC, IP	8813	•		•		•			•		•							•	
SSEA-3	MC-631	FC, IHC	8833	•		•		•			•		•								
OCT 3/4	EM92	ICF, FC, WB, IHC	5841	•							•		•							•	
Sca-1 (Ly6A/E)	D7	FC, IP, WB	5981	•	•	•	•				•		•	•	•	•	•	•			•
TNFRSF8 (CD30)	mCD30.1	FC, FA		•	•	•							•								
Thy-1 (CD90)	G7	FC, IHC, FA	0901	•	•																
Thy1.1 (CD90.1)	HIS51		0900	•		•	•	•			•		•	•	•	•	•	•			•
Thy1.2 (CD90.2)	30-H12 & 53-2.1	FC, IHC, FA, IP	0903 & 0902	•	•	•	•	•			•		•	•	•	•	•	•			•
Recombinant Proteins																					
	Human		Mouse																		
Products	Recombinant Protein	Carrier-Free	Recombinant Protein	Carrier-Free																	
B18R	14-8185	34-8185	14-8185	34-8185																	
FGF acidic (FGF-1)																					
FGF basic (FGF-2)	14-8986	34-8986	14-8982																		
LIF	14-8460	34-8460	14-8521	34-8521																	
SCF	14-8349	34-8349	14-8341																		
BMP-2	14-8507	34-8507																			
G-CSF	14-8523	34-8523	14-8522	34-8522																	
SHH	14-8679		14-8671	34-8671																	

All designated trademarks used are the property of their respective owners.

TOLL FREE 888.999.1371 | TEL 858.642.2058 | FAX 858.642.2046 | contact@eBioscience.com | www.eBioscience.com

Q211123_Stem_JSSCR_6_11