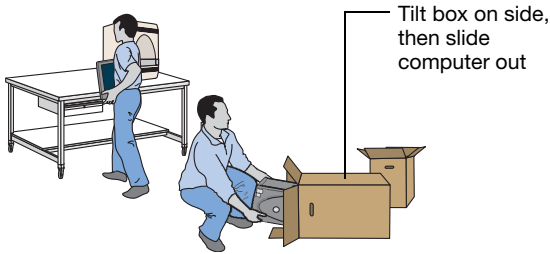


Applied Biosystems 7500/7500 Fast  
Real-Time PCR System  
Computer Setup Guide

**READ  
THIS  
FIRST**

## Unpack the computer boxes and set the proper voltage.

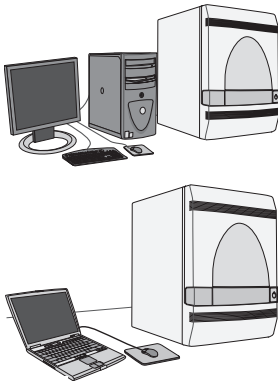
1. Unpack the computer boxes.



**IMPORTANT!** Do not connect the USB cable to the instrument or computer at this time. Doing so will result in installation of incorrect drivers.

2. Place the monitor, computer, keyboard, and mouse on the bench as shown below. Do not connect any components.

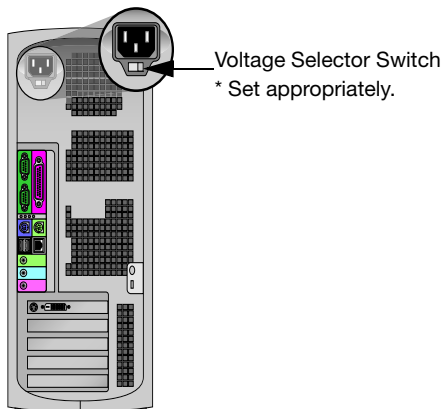
**Note:** The graphics in this guide are general and might vary slightly depending upon your order. Please see your Applied Biosystems installation guides for information on unpacking your instrument.



**CAUTION** Always check the voltage configuration at the rear of the computer to ensure that it matches the site voltage. Failure to properly set the voltage switch can cause damage to the computer.

### Tower Computers

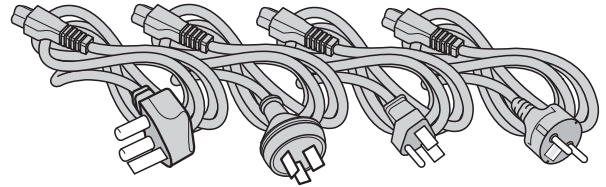
1. Set voltage and connect the power cord.
  - a. At the back of the computer tower, locate the voltage selector switch.



- b. If your computer has a voltage selector switch, set the voltage according to the table below.  
If your computer does not have a voltage selector switch, it contains an auto-sensing voltage selector and automatically sets the correct operating voltage.

Country	Voltage (V)
US/Japan	115
Europe/Australia	230

- c. **Inside the US:** The instrument includes three universal voltage kits (PN 603615) shown below. Use a US power cord from one of the three boxes for the instrument. Discard the additional two voltage kits (PN 603615). Power cords for the computer and monitor are included in their respective Dell® computer boxes.



**IMPORTANT! Outside the US,** use the power cords from the universal voltage kits (PN 603615), not the power cords provided in the computer carton.

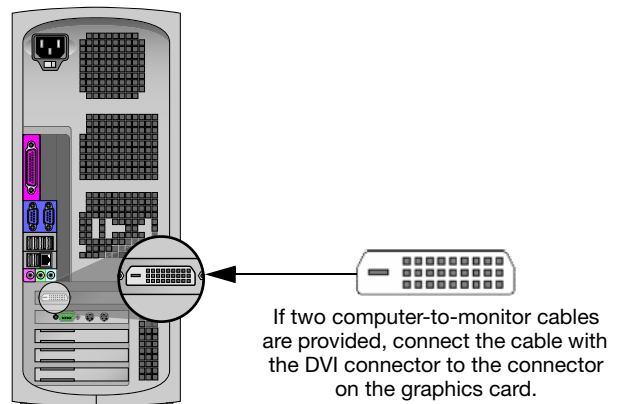
- d. **Outside the US:** The instrument includes three universal voltage kits (PN 603615). Use power cords from these voltage kits for the computer, monitor, and instrument.

### Laptop Computers

**IMPORTANT! Inside the US,** use the power cord kit that is shipped inside the computer box, not the international power cord kit that is in the packing kit.

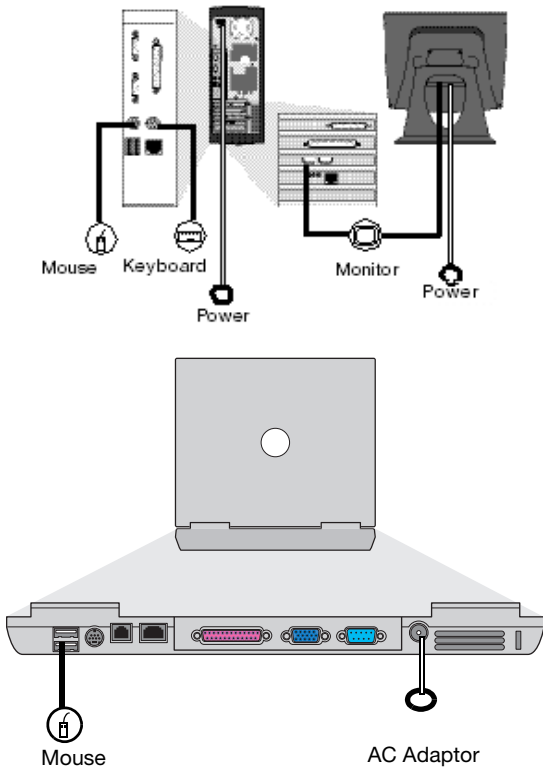
**IMPORTANT! Outside the US,** use the international power cord kit (PN 4346883) that is in the packing kit, not the power cord provided in the computer carton.

1. Connect the power cord (laptop computers contain an auto-sensing voltage detector that automatically selects the correct operating voltage). However, you must attach the correct power cord between the AC adaptor and the outlet.
2. Connect the DVI connector to the tower computer.



## Connect the components and power on the computer.

1. Connect the mouse, monitor, and keyboard as instructed by the Dell® manufacturing instructions and shown below.

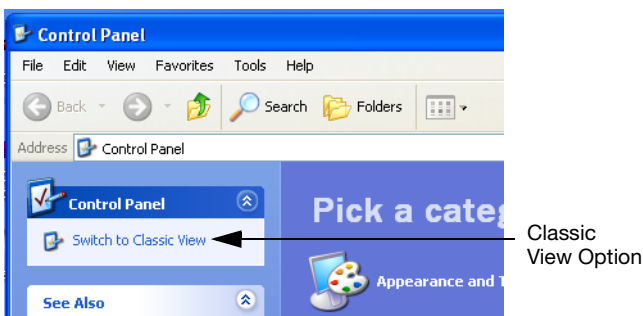


2. Power on the tower computer.  
Power on the laptop computer.
3. Power on the computer monitor with tower configuration.

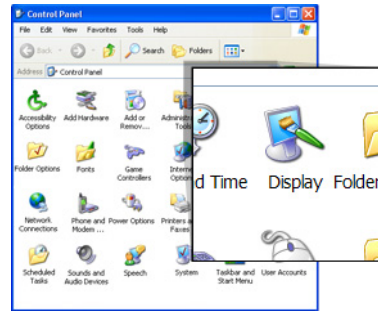
## Set the display preferences.

**IMPORTANT!** You must also have Administrative privileges on the local computer to install and run the instrument software.

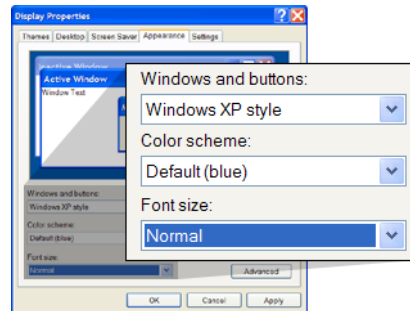
1. Log in with Windows Administrator Account privileges (see your system administrator for more information).
2. In the desktop, select **Start ▶ Control Panel** to see the following screen, then select **Switch to Classic View**.



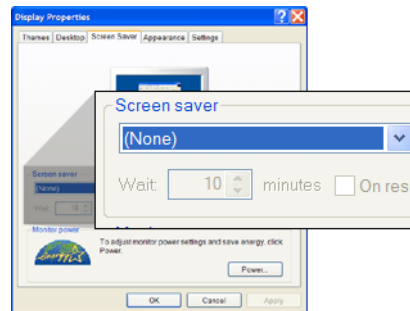
3. Double-click **Display**.



4. Select the **Appearance** tab then specify your appearance scheme as shown below.

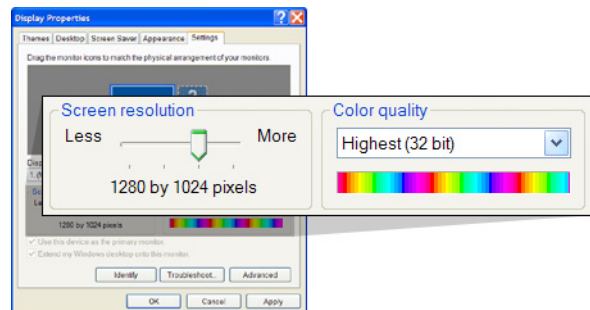


5. Select the **Screen Saver** tab, then set the screen saver option to **None**. Make sure your computer does not go into screen saver mode, which interferes with the data collection process.

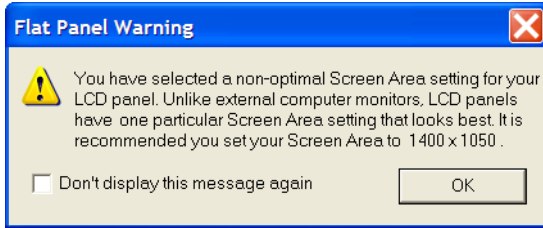


6. Select the **Settings** tab, then specify your settings as shown below, then click **OK**.

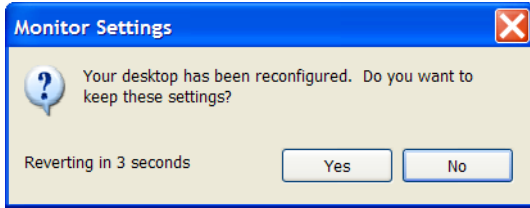
**Note:** The maximum resolution of some laptop models is 1024 by 768 pixels.



7. If the computer displays the Flat Panel Warning, click **OK**.



8. In the Display Properties dialog box, click **OK**. When the following message is displayed, click **Yes** to accept the settings.



## Modify the power options and proceed with system installation.

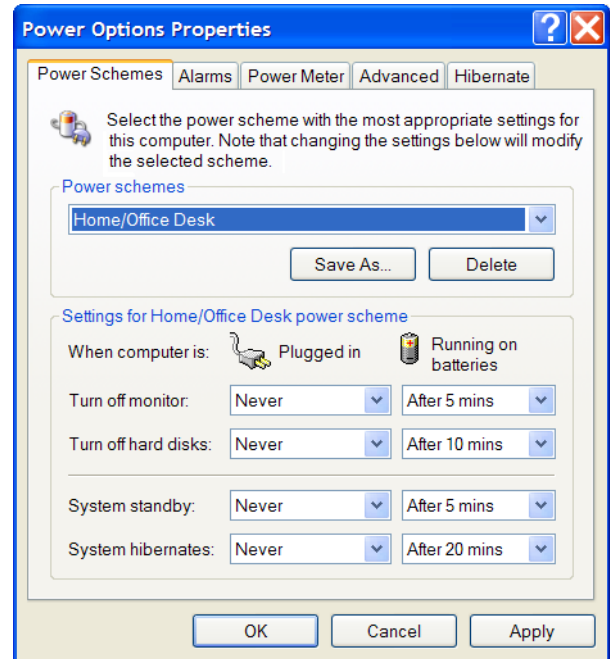
1. Return to the Control Panel, then double-click **Power Options**.



**IMPORTANT!** Make sure that the computer Hibernate power setting is disabled. If the Hibernate setting is enabled, data collection stops when the computer goes into Hibernate mode.

2. Modify the Power Options properties as shown in the following dialog box, then click **OK**.

**Note:** The following dialog box shows battery options for a laptop computer. This dialog box might be different for tower computers.



**IMPORTANT!** Do not connect the 7500/7500 Fast system to a wireless network. A wireless network can interfere with data collection.

**IMPORTANT!** If you plan to install antivirus or antispyware software to the computer, you *must* deactivate such software during installation or operation of Applied Biosystems software. Antivirus/antispyware software will disrupt the installation or data collection.

3. Connect your computer to the network. For help, see your system administrator.
4. Download Adobe® Acrobat® Reader (freeware) from <http://www.adobe.com>. You must download the software to view document links that are in the Real-Time System Setup wizard and the 7500/7500 Fast System Software Help.
5. After the computer is set up, proceed with the installation by using the Applied Biosystems installation and maintenance guides that accompanied your system.

© Copyright 2007, Applied Biosystems. All rights reserved.

Applied Biosystems is a registered trademark and AB (Design) and Applera are trademarks of Applera Corporation or its subsidiaries in the U.S. and/or certain other countries. All other trademarks are the sole property of their respective owners.

10/2007