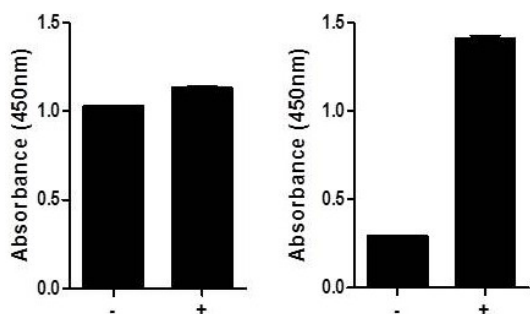


CREB (Total/Phospho) InstantOne ELISA™ Kit

Catalog Number: 85-86153

Also known as: Cyclic AMP-responsive element-binding protein

RUO: For Research Use Only. Not for use in diagnostic procedures.



A431 cells were either treated with UCN-01 (1 ug/mL for 60 min) (-) or treated with EGF (2 ug/mL for 10 min) (+). Cell lysates were prepared as described in the InstantOne ELISA™ User Manual. Using the CREB (Total/Phospho) InstantOne ELISA™, the cell lysates were analyzed for levels of both total CREB and phosphorylated CREB (Ser133).

Product Information

Contents: CREB (Total/Phospho) InstantOne ELISA™



Catalog Number: 85-86153

Clone: ELISA



Temperature Limitation: Store at 2-8°C.

Batch Code: Refer to vial

Use By: Refer to vial

Description

The InstantOne ELISA™ is specifically engineered for accurate measurement of total and phosphorylated human, mouse, and hamster CREB (Ser133) in cell lysates. Detection of phosphorylated rat CREB (Ser133) is also expected. The InstantOne ELISA™ kit allows for fast analysis of samples in approximately one hour. All reagents used in a traditional sandwich ELISA are added in solution to a plate followed by a wash step and detection with the TMB colorimetric substrate.

cAMP response element-binding protein (CREB) is a transcription factor that regulates the expression of numerous genes in response to growth factors, hormones, neurotransmitters, ion fluxes, and stress signals. CREB can form homo- or heterodimers with related family members such as ATF. Upon ligand binding, CREB is activated via phosphorylation at Ser133 by several different kinases, including MAPK and PKA (cAMP-dependent protein kinase). In its inactive form, PKA resides in the cytoplasm as a heterotetramer of paired regulatory and catalytic subunits. Stimulation of cAMP causes release of the catalytic subunits from PKA, thereby allowing phosphorylation of CREB at Ser133.

Components

This (Total/Phospho) kit includes sufficient reagents to perform 48 wells of the total and 48 wells of the phospho-specific detection for a total of 96 wells.

User Manual

CREB (Total) Capture Antibody Reagent (Part No. IOCREBCAR1M) - 1 x 1.5 mL
 CREB (Total) Detection Antibody Reagent (Part No. IOCREBDAR1M) - 1 x 1.5 mL
 phospho-CREB (Ser133) Capture Antibody Reagent (Part No. IOPCREBCAR1M) - 1 x 1.5 mL
 phospho-CREB (Ser133) Detection Antibody Reagent (Part No. IOPCREBDAR1M) - 1 x 1.5 mL
 InstantOne™ Assay Plate (Part No. IOAP96) - 96 well (sealed)
 Cell Lysis Buffer (5X) (Part No. IOCLB1) - 10 mL
 Enhancer Solution (Part No. IOES1) - 1 mL
 Wash Buffer (10X) (Part No. IOWB1) - 15 mL
 Detection Reagent (TMB Substrate) (Part No. IODR1) - 12 mL
 Stop Solution (Part No. IOSS1) - 12 mL
 Positive Control Cell Lysate (lyophilized) (Part No. IOCREBPC1) - 0.25 mL
 Plate seal - 1 ea

Not for further distribution without written consent. Copyright © 2017 Thermo Fisher Scientific Inc. All rights reserved. All trademarks are property of Thermo Fisher Scientific and its subsidiaries unless otherwise specified. Tel: 1 800 9556288 • thermofisher.com/askaquestion • thermofisher.com/support

CREB (Total/Phospho) InstantOne ELISA™ Kit

Catalog Number: 85-86153

Also known as: Cyclic AMP-responsive element-binding protein

RUO: For Research Use Only. Not for use in diagnostic procedures.

Applications Reported

This ELISA antibody has been reported for use in ELISA.

Applications Tested

This assay has been validated for the detection of phosphorylated human CREB (Ser133) in EGF-stimulated A431 cell lysates. This assay was evaluated for specificity by immunoblot analysis using the same lysates and antibody (data shown above).

Related Products

85-86151 CREB (Total) InstantOne ELISA™

85-86152 phospho-CREB (Ser133) InstantOne ELISA™

IOCLB InstantOne ELISA Cell Lysis Buffer (5X) – 100 mL

IOES InstantOne ELISA Enhancer Solution – 100 mL

IOWB InstantOne ELISA Wash Buffer (10X) – 500 mL