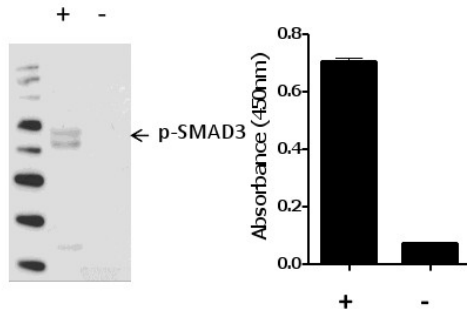


phospho-SMAD3 (Ser423/425) InstantOne ELISA™ Kit

Catalog Number: 85-86192

Also known as: Mothers against decapentaplegic homolog 3

RUO: For Research Use Only. Not for use in diagnostic procedures.



C2C12 cells were either unstimulated (-) or treated with TGF beta (50 ng/mL for 90 min) (+). Lysates were prepared as described in the InstantOne ELISA™ User Manual. Phosphorylated SMAD3 (Ser423/425) was analyzed in cell lysates by immunoblotting (left) and InstantOne ELISA™ (right) using 10ug/analysis. The intensity of the band as detected by immunoblot correlates with InstantOne ELISA™ absorption values.

Product Information

Contents: phospho-SMAD3 (Ser423/425) InstantOne ELISA™



Catalog Number: 85-86192

Clone: ELISA



Temperature Limitation: Store at 2-8°C.



Batch Code: Refer to vial



Use By: Refer to vial

Description

The InstantOne ELISA™ is specifically engineered for accurate measurement of phosphorylated human SMAD3 (Ser423/425) in cell lysates. The InstantOne ELISA™ kit allows for fast analysis of samples in approximately one hour. All reagents used in a traditional sandwich ELISA are added in solution to a plate followed by a wash step and detection with the TMB colorimetric substrate.

SMAD3 is a member of a transcription factor family involved in mediating signaling by growth and differentiation factors such as transforming growth factor beta (TGF- β) and bone morphogenic protein (BMP). SMAD3, along with SMADs 1, 5, and 9, belongs to a class of SMAD proteins that are activated via phosphorylation by specific receptors in response to ligand binding. SMAD3 is activated by members of the TGF- β family. Upon TGF- β binding, SMAD3 is phosphorylated by the TGF- β receptor, which induces dissociation of these proteins from SARA and direct interaction with SMAD4. This SMAD complex translocates to the nucleus to modulate the transcription of genes involved in apoptosis, cell proliferation, and differentiation.

Components

User Manual

Phospho-SMAD3 (Ser423/425) Capture Antibody Reagent (Part No. IOPSMAD3CAR1) - 3 mL

Phospho-SMAD3 (Ser423/425) Detection Antibody Reagent (Part No. IOPSMAD3DAR1) - 3 mL

InstantOne™ Assay Plate (Part No. IOAP96) - 96 well (sealed)

Cell Lysis Buffer (5X) (Part No. IOCLB1) - 10 mL

Enhancer Solution (Part No. IOES1) - 1 mL

Wash Buffer (10X) (Part No. IOWB1) - 15 mL

Detection Reagent (TMB Substrate) (Part No. IODR1) - 12 mL

Stop Solution (Part No. IOSS1) - 12 mL

Positive Control Cell Lysate (lyophilized) (Part No. IOSMAD3PC1) - 0.25 mL

Plate seal - 1 ea

Applications Tested

This assay has been validated for the detection of phosphorylated SMAD3 in stimulated C2C12 cell lysates. This assay was evaluated for specificity by immunoblot analysis using the same lysates and antibody (data shown above).

phospho-SMAD3 (Ser423/425) InstantOne ELISA™ Kit

Catalog Number: 85-86192

Also known as: Mothers against decapentaplegic homolog 3

RUO: For Research Use Only. Not for use in diagnostic procedures.

Related Products

IOCLB InstantOne ELISA Cell Lysis Buffer (5X) – 100 mL

IOES InstantOne ELISA Enhancer Solution – 100 mL

IOWB InstantOne ELISA Wash Buffer (10X) – 500 mL