

TAB1 Monoclonal Antibody (clone C25E9), Rabbit

Store at -20°C

Catalog Number: A16572

Pub. No. MAN0009283 Rev. 1.00

Clonality: Monoclonal
Reactivity: Human TAB1

Amount: 100 µL
Species Reactivity: Human, Monkey

Host/Class: Rabbit IgG

Product Description

The TAK1 mitogen-activated protein kinase kinase kinase pathway is activated by TGF-β and various pro-inflammatory signals (1,2). TAK1 activation requires association with TAB1 (TAK1 binding protein 1), which triggers TAK1 autophosphorylation at Thr184 and Thr187 (3,4). Once activated, TAK1 phosphorylates the MAPK kinases MKK4 and MKK3/6, which activate JNK and p38 MAPK, respectively. TAK1 and TRAF6 also activate the NF-κB pathway by phosphorylating the NF-κB inducing kinase (NIK) to trigger subsequent activation of IKK (2,5). In addition to TAK1, TAB1 interacts with and activates p38α MAPK (6). Targeted disruption of the TAB1 gene in mice causes a drastic reduction in TAK1 activity (7).

Product Specifications

Immunogen:	A synthetic peptide corresponding to residues surrounding Pro381 of human TAB1
Apparent MW:	60 kDa
Gene ID:	10454
Protein Accession No.:	Q15750
Clone/PAD:	C25E9
Isotype:	IgG
Lot:	See product label

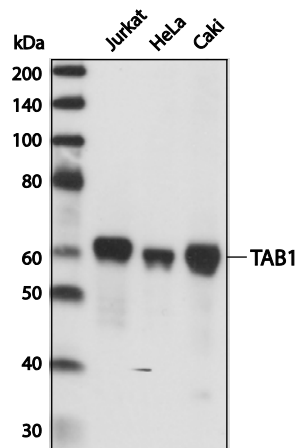


Figure 1

Western blot analysis of extracts from Jurkat, HeLa and Caki cell lines using TAB1 Monoclonal Antibody.

Product Applications

Applications reported for this antibody include western blot, and immunoprecipitation.

Because conditions may vary, it is recommended that each investigator determine the optimal amount of antibody to be used for each application.

Application	Recommended Dilution
Western blotting	1:1000
Immunoprecipitation	1:100

Storage and Handling

Store reagents at -20°C. Avoid repeated freezing and thawing. Do not aliquot the antibody.

Stability

When stored as instructed, expires one year from date of receipt unless otherwise indicated on product label.

Storage Buffer

10 mM sodium HEPES (pH 7.5), 150 mM NaCl, 100 µg/mL BSA, 50% glycerol, <0.02% sodium azide.

For research use only. Not for use in diagnostic procedures

Manufacturing Site • 7335 Executive Way • Frederick • MD 21704 • E-mail: techsupport@lifetech.com

References

1. Yamaguchi, K. et al. (1995) Science 270, 2008-2011.
2. Ninomiya-Tsuji, J. et al. (1999) Nature 398, 252-256.
3. Shibuya, H. et al. (1996) Science 272, 1179-1182.
4. Sakurai, H. et al. (2000) FEBS Lett. 474, 141-145.
5. Wang, C. et al. (2001) Nature 412, 346-351.
6. Ge, B. et al. (2002) Science 295, 1291-1294.
7. Komatsu, Y. et al. (2002) Mech. Dev. 119, 239-249.








Product Documentation

To obtain a Certificate of Analysis or Safety Data Sheets (SDSs), visit www.lifetechnologies.com/support.

Limited Product Warranty

Life Technologies Corporation and/or its affiliate(s) warrant their products as set forth in the Life Technologies' General Terms and Conditions of Sale found on Life Technologies' website at www.lifetechnologies.com/termsandconditions. If you have any questions, please contact Life Technologies at www.lifetechnologies.com/support.

Explanation of symbols

Symbol	Description	Symbol	Description	Symbol	Description
	Manufacturer		Catalog number		Batch code
	Use by		Temperature limitation		
	Consult instructions for use		Caution, consult accompanying documents		

Limited Use Label License No. 508: Cell Signaling Technology and Epitomics Technology for Antibody Production

This antibody is developed, validated, and produced by Cell Signaling Technology (CST) using in part technology under license (granting certain rights including those under U.S. Patents No. 5,675,063 and 7,429,487) from Epitomics, Inc.

DISCLAIMER: LIFE TECHNOLOGIES AND/OR ITS AFFILIATE(S) DISCLAIM ALL WARRANTIES WITH RESPECT TO THIS DOCUMENT, EXPRESSED OR IMPLIED, INCLUDING BUT NOT LIMITED TO THOSE OF MERCHANTABILITY, FITNESS FOR A PARTICULAR PURPOSE, OR NON-INFRINGEMENT. TO THE EXTENT ALLOWED BY LAW, IN NO EVENT SHALL LIFE TECHNOLOGIES AND/OR ITS AFFILIATE(S) BE LIABLE, WHETHER IN CONTRACT, TORT, WARRANTY, OR UNDER ANY STATUTE OR ON ANY OTHER BASIS FOR SPECIAL, INCIDENTAL, INDIRECT, PUNITIVE, MULTIPLE OR CONSEQUENTIAL DAMAGES IN CONNECTION WITH OR ARISING FROM THIS DOCUMENT, INCLUDING BUT NOT LIMITED TO THE USE THEREOF.

©2013 Life Technologies Corporation. All rights reserved. The trademarks mentioned herein are the property of Life Technologies Corporation and/or its affiliates or their respective owners.

For support visit www.lifetechnologies.com/support or email techsupport@lifetech.com

www.lifetechnologies.com

28 August 2013

life
technologies™