



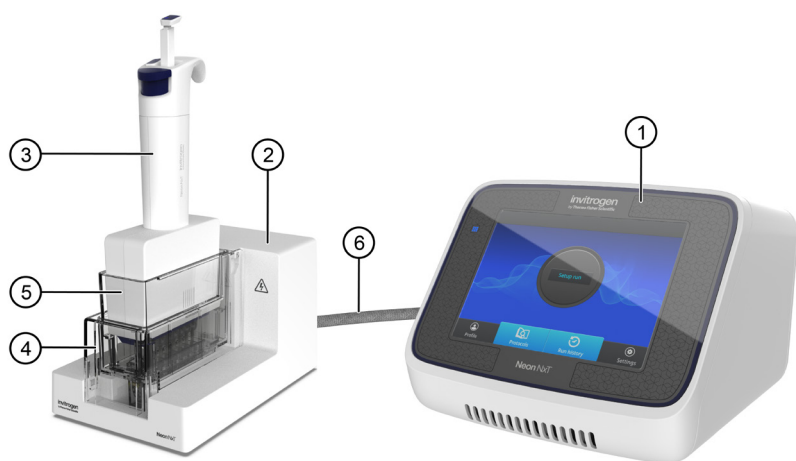
Contents

Product	Cat. No.
Neon™ NxT Electroporation System with 1-Channel and 8-Channel Pipettes	NEON18S
Neon™ NxT Electroporation System 8-Channel Upgrade Package	NEON8 / NEON8U



Product description

The Neon™ NxT Electroporation System is a benchtop electroporation device that employs an electroporation technology which uses a pipette tip as an electroporation chamber to efficiently transfect mammalian cells including primary and immortalized hematopoietic cells, stem cells, and primary cells. The system efficiently delivers nucleic acids, proteins, and siRNA into all mammalian cell types including primary and stem cells with a high cell survival rate. Transfection is performed using as few as 1×10^4 or as many as 1×10^7 cells in a volume of 10 μ L or 100 μ L for a single reaction with the 1-channel pipette, or up to 8 reactions with the 8-channel pipette.



Neon™ NxT Electroporation System

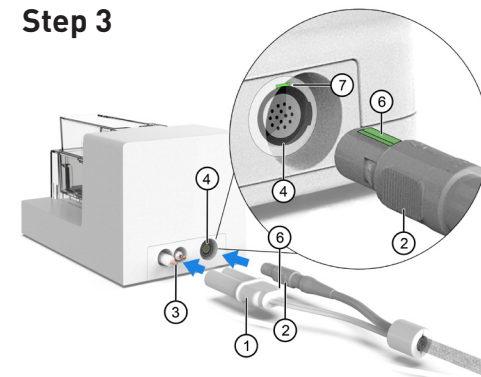
- | | |
|--|------------------------------------|
| 1. Neon™ NxT device | 4. Tube chamber for Neon™ NxT Tube |
| 2. Neon™ NxT 8-Channel Pipette Station | 5. Neon™ NxT 8-Channel Tube |
| 3. Neon™ NxT 8-Channel Pipette | 6. Connector cable |

For Research Use Only. Not for use in diagnostic procedures.

Neon™ NxT 8-Channel Pipette Station setup

1. Place the Neon™ NxT 8-Channel Pipette Station near the Neon™ NxT device.
2. Connect the high voltage ① and low voltage ② interface connectors on the cable to the high voltage ③ and low voltage ④ interface ports at the rear of the Neon™ NxT 8-Channel Pipette Station.

Step 3

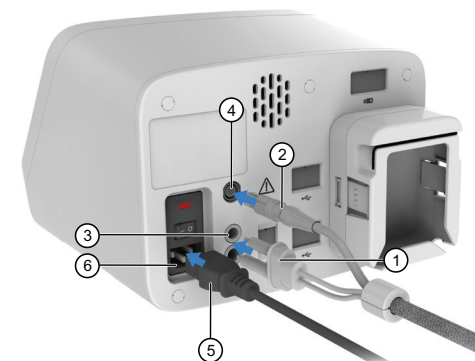


Note: Ensure the notch ⑥ on the low voltage connector ② is aligned with the corresponding slot ⑦ on the low voltage port ④.

3. Connect the high voltage ① and low voltage ② interface connectors on the cable to the high voltage ③ and low voltage ④ interface ports at the rear of the Neon™ NxT device.

Note: Ensure the notch on the low voltage connector is properly aligned with the low voltage port.

Step 4-6



4. Ensure the AC power switch is in the **Off** position.
5. Attach the power cord ⑤ to the AC inlet ⑥ at the rear of the Neon™ NxT device, then plug the cord into an electrical outlet.



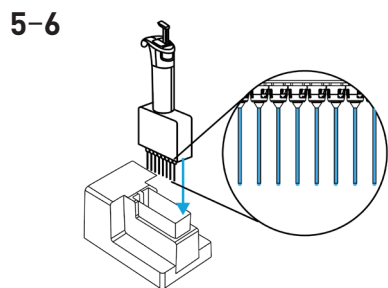
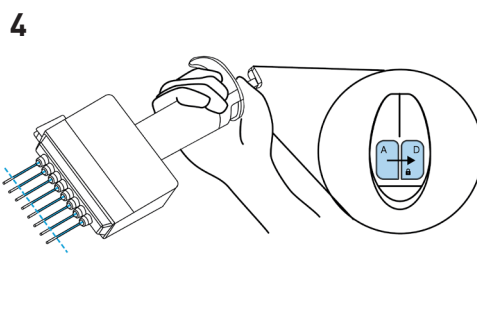
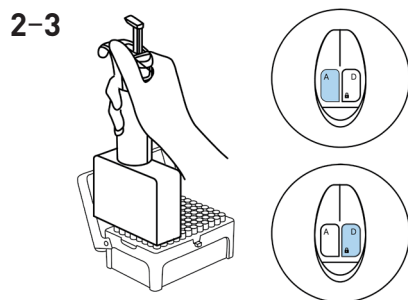
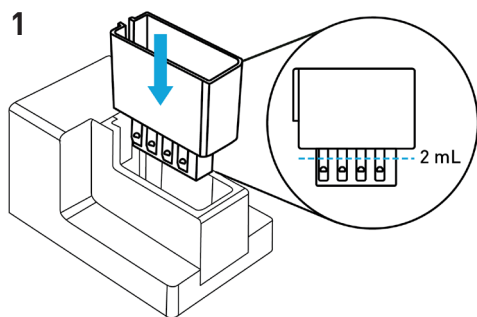
Online resources

- Scan the QR code for videos on how to use the Neon™ NxT pipettes, set up the system, and other FAQs.
- Visit thermofisher.com/neonnxt for manuals, safety, and additional product information.
- For support, visit thermofisher.com/support.



Load consumables using the 8-Channel Pipette

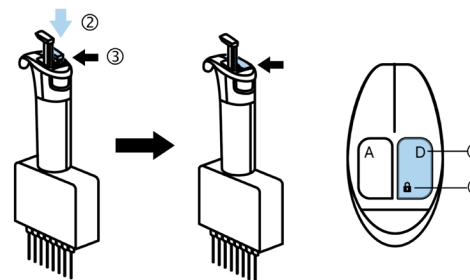
1. Add 2 mL of Electrolytic E10 Buffer for 10 μ L reactions, or Electrolytic E100 Buffer for 100 μ L reactions to each chamber of the 8-Channel Tube, then insert the tube into the pipette station until a click is heard.
2. Ensure the piston engagement button is released and the Aspirate plunger all the way down, then set the pipette evenly onto the tips, and push until the ClipTip™ tabs click into place.
3. Press the Dispense plunger, and continue pressing until the Piston engagement button clicks, and is flush with the top of the pipette to lock the pistons.
4. Ensure the tips are secure and the the pistons retract evenly when the Aspirate plunger is pressed. Press the Dispense plunger to return to the starting position.
5. Slowly press the Aspirate plunger all the way down to aspirate samples. **Note:** Ensure there are no bubbles in the tips. If bubbles are present, press the Dispense plunger until the bubbles exit the tips, then press the Aspirate plunger to refill the tips. Check for meniscus formation at the end of the tip for best results.
6. Slowly dock the pipette into the 8-Channel Tube in the pipette station until it clicks into place.
7. After electroporation, remove the pipette from the pipette station and dispense samples into an appropriate vessel. **Note:** Tips can be reused a second time for duplicate samples.



Using the 8-Channel Pipette

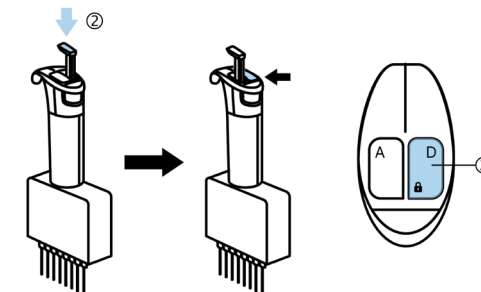
When the Dispense plunger ② is pressed to the first stop, it functions as the Piston engagement button ③.

Note: The Piston engagement button ③ needs to be released before attaching tips.



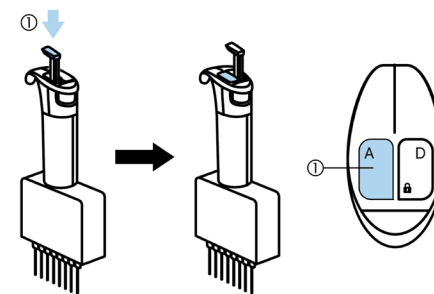
Press the Dispense plunger ② until it is flush with the top of the pipette to:

- Engage the pipette with the pistons in the tips.
- Dispense samples.



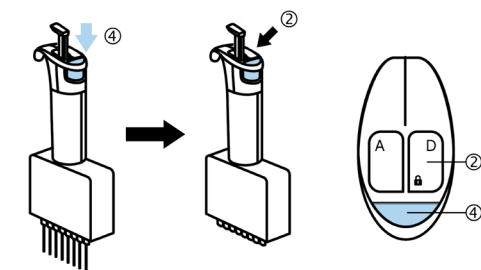
Press the Aspirate plunger ① to:

- Retract pistons.
- Aspirate samples.



Press the Eject button ④ to:

- Eject the tips.
- Release the piston engagement button (when the Dispense plunger ② is all the way down).



Limited product warranty: Life Technologies Corporation and/or its affiliate(s) warrant their products as set forth in the Life Technologies' General Terms and Conditions of Sale found on Life Technologies' website at www.thermofisher.com/us/en/home/global/terms-and-conditions.html.

Disclaimer: TO THE EXTENT ALLOWED BY LAW, LIFE TECHNOLOGIES AND/OR ITS AFFILIATE(S) WILL NOT BE LIABLE FOR SPECIAL, INCIDENTAL, INDIRECT, PUNITIVE, MULTIPLE OR CONSEQUENTIAL DAMAGES IN CONNECTION WITH OR ARISING FROM THIS DOCUMENT, INCLUDING YOUR USE OF IT.

Manufacturer: Life Technologies Holdings Pte Ltd Block 33 | Marsiling Industrial Estate Road 3 | #07-06, Singapore 739256

©2024 Thermo Fisher Scientific Inc. All rights reserved. All trademarks are the property of Thermo Fisher Scientific and its subsidiaries unless otherwise specified.