



Human MMP 3-Plex Panel

Technical Data Sheet

Catalog #: LHC6002

Lot #:* 980047

*Note: A letter at the end of the lot number signifies an additional packaging of this same lot.

Intended Use

This kit is comprised of components for the measurement of human soluble MMP-3, MMP-9, and MMP-13 in tissue culture supernatant only. Due to the specific nature of the buffer systems and standards provided, it is not recommended to multiplex MMPs with additional markers. These reagents are intended for use in the **Luminex® 100™/200™** and the **FlexMAP 3D® System**. **This kit is configured for research use only and is not to be used in diagnostic procedures.**

Reagents Provided

- Hu MMP 3-Plex
1. **Part #:** LM135 **Description:** Antibody Bead Concentrate (10X) **Lot:** 1020448 **Size:** 0.25 mL-100 tests
- Form:** 0.25 mL 10X bead concentrate solution in storage buffer. Contains 0.05% sodium azide as a preservative.
Storage: **Light sensitive material.** Store at 2 to 8°C, in the dark, until the expiration date indicated on the kit.
- Hu MMP 3-Plex
2. **Part #:** BN135 **Description:** Biotinylated Ab Conc. (10X) **Lot:** 1020447 **Size:** 1 mL-100 tests
- Form:** 1 mL of a 10X stock of Biotinylated Antibody Concentrate in Biotin Diluent. Contains 0.1% sodium azide as preservative. Concentration of antibody is matched to this lot of beads. Do not mix lots of Coated Beads and Detection Antibody.
Storage: Store at 2 to 8°C until the expiration date indicated on the kit.
3. **Part #:** SM047 **Description:** Hu 3-Plex MMP Standard **Lot:** R071325 **Size:** 2 Vials
- Form:** Lyophilized. The proteins in this standard have been calibrated against the masses of highly purified recombinant proteins, with the respective Invitrogen ELISA kits and Luminex kits. Contains 0.1% sodium azide as a preservative.
Storage: Store at 2 to 8°C. Use within 1 hour after reconstitution. Discard immediately after use.

Concentration of Reconstituted Standard**:

MMP-3 (190.2 ng/mL) MMP-9 (42.0 ng/mL) MMP-13 (185.5 ng/mL)

****Important note: The concentrations of reconstituted standard are lot-specific. Please verify all concentrations entered in data analysis software.**

Reconstitution of Standard: Note: Reconstitute vial of standard with 0.5 mL of Assay Diluent. Allow vial of standard to rehydrate for at least 10 minutes.

Recommended Starting Concentration for Standard Curve: Upon reconstitution, the starting concentrations of the standards are the values cited above. Make serial 1:3 dilutions in the same diluent used to reconstitute the standard. Use 100 µL per assay. Refer to the User Manual for further information.

For Research Use Only. CAUTION: Not for human or animal therapeutic or diagnostic use.

www.invitrogen.com

Invitrogen Corporation • 7335 Executive Way, Frederick, MD 21704 • Tel: 800.955.6288 • E-mail: techsupport@invitrogen.com

LHC6002

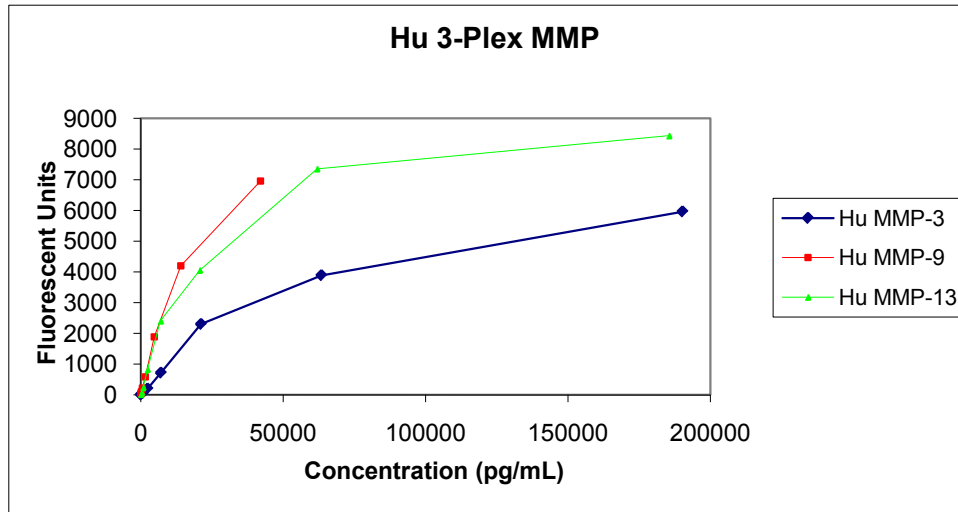
(Page 1 of 2) MAN0005092 Rev 1.00 Effective Date: 01 SEP 2011

Limited Use Label License: Research Use Only

The purchase of this product conveys to the purchaser the limited, non-transferable right to use the purchased amount of the product only to perform internal research for the sole benefit of the purchaser. No right to resell this product or any of its components is conveyed expressly, by implication, or by estoppel. This product is for internal research purposes only and is not for use in commercial applications of any kind, including, without limitation, quality control and commercial services such as reporting the results of purchaser's activities for a fee or other form of consideration. For information on obtaining additional rights, please contact outlicensing@lifetech.com or Out Licensing, Life Technologies, 5791 Van Allen Way, Carlsbad, California 92008.

Human MMP 3-Plex Panel Technical Data Sheet

Performance Characteristics



Typical Standard Curves

Analyte	Hu MMP-3	Hu MMP-9	Hu MMP-13
Bead Region	66	49	67
Sensitivity (pg/mL)	<1	<1	<1
Recovery (TC)	✓	✓	✓
Intra-assay variation	2.3%	8.5%	4.7%
Inter-assay variation	4.0%	9.7%	6.2%

Notes: 70-130% recovery (✓), 50-69% recovery (-), 131-150% recovery (+) and <50% or >150% recovery (NR - Not recommended)

Specificity: The analytes of the multiplex were assayed individually at 200 or 450 ng/mL with the Invitrogen Human MMP 3-Plex Panel and all were found to have no cross-reactivity.

Explanation of symbols

Symbol	Description	Symbol	Description
	Catalogue Number		Batch code
	Research Use Only		In vitro diagnostic medical device
	Use by		Temperature limitation
	Manufacturer		European Community authorised representative
	Without, does not contain		With, contains
	Protect from light		Consult accompanying documents
	Directs the user to consult instructions for use (IFU), accompanying the product.		

For Research Use Only. CAUTION: Not for human or animal therapeutic or diagnostic use.

www.invitrogen.com

Invitrogen Corporation • 7335 Executive Way, Frederick, MD 21704 • Tel: 800.955.6288 • E-mail: techsupport@invitrogen.com

LHC6002

(Page 2 of 2) MAN0005092 Rev 1.00 Effective Date: 01 SEP 2011

Limited Use Label License: Research Use Only

The purchase of this product conveys to the purchaser the limited, non-transferable right to use the purchased amount of the product only to perform internal research for the sole benefit of the purchaser. No right to resell this product or any of its components is conveyed expressly, by implication, or by estoppel. This product is for internal research purposes only and is not for use in commercial applications of any kind, including, without limitation, quality control and commercial services such as reporting the results of purchaser's activities for a fee or other form of consideration. For information on obtaining additional rights, please contact outlicensing@lifetech.com or Out Licensing, Life Technologies, 5791 Van Allen Way, Carlsbad, California 92008.