

Catalog No. 4471136

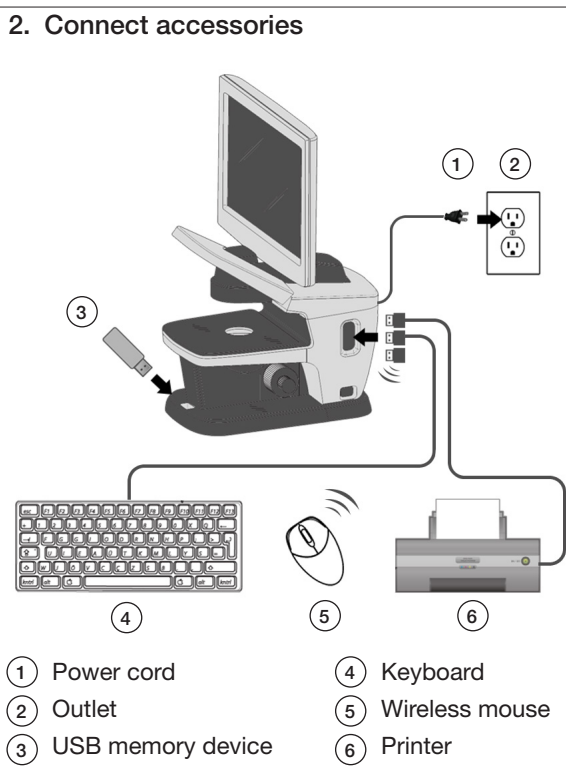
Contents
FLoid™ Cell Imaging Station
Power cord
Keyboard
Wireless mouse
USB memory device (containing user manual)
Quick reference card
Printer (Cat. No. 4472351)

1. Install battery in mouse

- a. Remove cover from mouse.
- b. Insert battery.
- c. Turn on power switch.

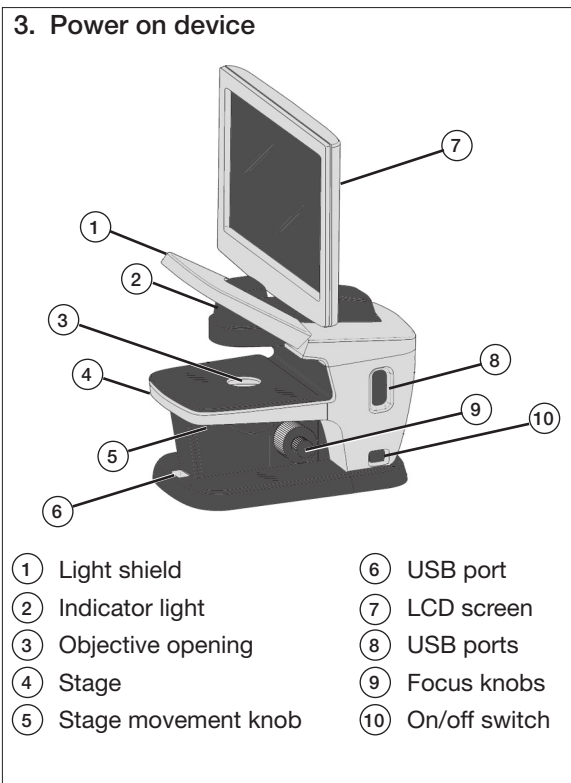


2. Connect accessories



- | | |
|---------------------|------------------|
| ① Power cord | ④ Keyboard |
| ② Outlet | ⑤ Wireless mouse |
| ③ USB memory device | ⑥ Printer |

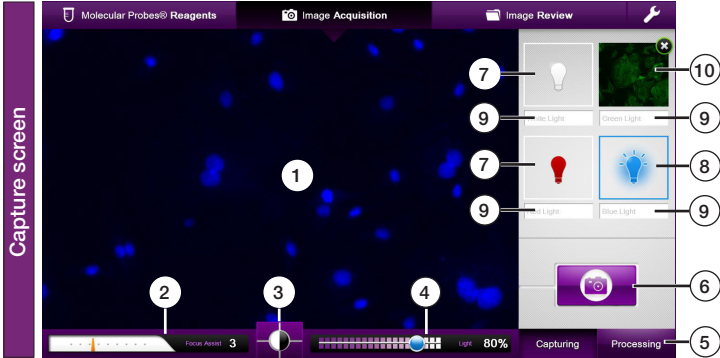
3. Power on device



- | | |
|-----------------------|-----------------|
| ① Light shield | ⑥ USB port |
| ② Indicator light | ⑦ LCD screen |
| ③ Objective opening | ⑧ USB ports |
| ④ Stage | ⑨ Focus knobs |
| ⑤ Stage movement knob | ⑩ On/off switch |

4. Capture image

- Place sample on stage over objective opening.
- Turn on light by selecting light bulb icon.
- Focus image using focus knobs.
- Capture image(s) then press **Processing** button.



- | | |
|-------------------------------|----------------------|
| ① Image pane | ⑥ Capture button |
| ② Focus assist gauge | ⑦ Light switch (OFF) |
| ③ Black/White toggle | ⑧ Light switch (ON) |
| ④ Light intensity slider | ⑨ Text box |
| ⑤ Capturing/processing toggle | ⑩ Image thumbnail |

Important Licensing Information: This product may be covered by one or more Limited Use Label Licenses. By use of this product you accept the terms and conditions of all applicable Limited Use Label Licenses.

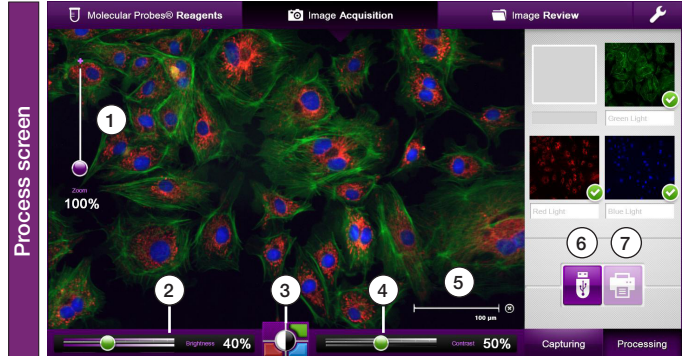
Manufacturer: Life Technologies Corporation | 22025 20th Ave SE | Bothell, WA 98021

© 2018 Thermo Fisher Scientific Inc. All rights reserved. All trademarks are the property of Thermo Fisher Scientific and its subsidiaries unless otherwise specified.

For support, visit thermofisher.com/support.

5. Process image

- Adjust brightness and contrast as needed.
- Save image to USB flash drive and print image.



- Zoom scale
- Brightness slider
- Color selector
- Contrast slider
- Scale bar
- Save button
- Print button

