

USER GUIDE

applied
biosystems®
by *life* technologies™

Pathatrix® *Campylobacter* spp. Kit (Individual Samples) Linked to Selective Agar Plates

For use with the Pathatrix® Auto Instrument

Catalog Number APC50

Publication Number MAN0007137

Revision 9 November 2012

For testing of Food and Environmental samples only.

life
technologies™

The information in this guide is subject to change without notice.

DISCLAIMER

LIFE TECHNOLOGIES CORPORATION AND/OR ITS AFFILIATE(S) DISCLAIM ALL WARRANTIES WITH RESPECT TO THIS DOCUMENT, EXPRESSED OR IMPLIED, INCLUDING BUT NOT LIMITED TO THOSE OF MERCHANTABILITY, FITNESS FOR A PARTICULAR PURPOSE, OR NON-INFRINGEMENT. TO THE EXTENT ALLOWED BY LAW, IN NO EVENT SHALL LIFE TECHNOLOGIES AND/OR ITS AFFILIATE(S) BE LIABLE, WHETHER IN CONTRACT, TORT, WARRANTY, OR UNDER ANY STATUTE OR ON ANY OTHER BASIS FOR SPECIAL, INCIDENTAL, INDIRECT, PUNITIVE, MULTIPLE OR CONSEQUENTIAL DAMAGES IN CONNECTION WITH OR ARISING FROM THIS DOCUMENT, INCLUDING BUT NOT LIMITED TO THE USE THEREOF.

Limited Use Label License: Environmental testing, quality control/quality assurance testing, food and agricultural testing

The purchase of this product conveys to the purchaser the limited, non-transferable right to use the purchased amount of the product (a) to perform internal research for the sole benefit of the purchaser; and (b) for environmental testing, quality control/quality assurance testing, food and agricultural testing, including reporting results of purchaser's activities in environmental testing, quality control/quality assurance testing, food and agricultural testing for a fee or other commercial consideration. No other right is hereby granted expressly, by implication, or by estoppel. This product is for environmental testing, quality control/ quality assurance testing, food and agricultural testing and research purposes only.

The purchase of this product does not grant the purchaser any additional rights, including (without limitation) the right to transfer or resell the product in any form or the right to use the product as a therapeutic agent or diagnostics test component, or to use the product to perform other tests on a contract or fee per test basis for or on behalf of third parties. For information on obtaining additional rights, please contact outlicensing@lifetech.com.

TRADEMARKS

The trademarks mentioned herein are the property of Life Technologies Corporation or their respective owners in the United States and other countries.

TaqMan is a registered trademark of Roche Molecular Systems, Inc. used under permission and license.

Stomacher is a registered trademark of Seward Limited, UK. Whirl-Pak is a registered trademark of Wheatherby/Nasco, Inc.

© 2012 Life Technologies Corporation. All rights reserved.

Contents

Product Information	5
About the kit	5
Kit contents	6
Materials not included in the kit	6
Methods	9
Workflow	9
Procedural guidelines	9
Sample enrichment	10
Sample preparation	10
Samples and consumable loading	11
Sample unloading	13
Detection – direct plating	13
Test result interpretation and classification	14
■ APPENDIX A Background	15
Product overview	15
Description of target organisms	15
Audience	15
Sampling protocol	15
Kit sensitivity	15
Operating conditions	16
■ APPENDIX B Ordering Information	17
Related materials from Life Technologies	17
■ APPENDIX C Safety	18
Chemical safety	18
Specific chemical handling	19
Biological hazard safety	19

Documentation and Support	20
Obtaining SDSs	20
Obtaining Certificates of Analysis	20
Obtaining support	20
Limited product warranty	20
Reference	21

Product Information

IMPORTANT! Before using this product, read and understand the information in [Appendix C, “Safety” on page 18](#).

CAUTION! Care must be taken when handling samples that may contain *Campylobacter* spp. Laboratory personnel must be adequately trained to handle pathogens before being permitted to analyze samples for *Campylobacter* spp. Laboratory personnel must wear appropriate protective equipment, which includes but is not limited to: protective eyewear, face shield, clothing/lab coat, and gloves. Waste should be disposed of in compliance with local and national legislation as appropriate.

About the kit

The Pathatrix® *Campylobacter* spp. Kit provides a sample preparation method for presence/absence testing based on the detection of as few as 1–10 cfu (colony forming units)/25 g of food sample.

Using the Pathatrix® *Campylobacter* spp. Kit (Individual Samples) Linked to Selective Agar Plates, presumptive results can be obtained, prior to confirmation, within 49 hours. A presumptive positive isolate should be subsequently confirmed by the use of subculture, as well as appropriate biochemical and serological tests as required.

Once confirmed, the results are reported as:

- *Campylobacter* spp. **Detected** in 25 g (sample matrices)
- *Campylobacter* spp. **Not detected** in 25 g (sample matrices)

See [Appendix A on page 15](#) for additional background information.

Kit contents

The Pathatrix® *Campylobacter* spp. Kit (Cat. no. APC50) contains enough consumable components and Pathatrix® paramagnetic beads to process 50 samples.

Item	Quantity or volume	Storage
Pre-sterilized Sample and Elution Vessel Packs	50 each	Room temperature
Pre-sterilized Capture Phase Packs	50 each	Room temperature
Pre-sterilized Flat Cap Lids	50 each	Room temperature
Anti- <i>Campylobacter</i> spp. Antibody-Coated Paramagnetic Beads†	2.5 mL (50 tests)	5 ±3°C

† The beads have a shelf life of 12 months and are labeled with an expiration date accordingly.

IMPORTANT! Never freeze the Pathatrix® paramagnetic beads. Beads that have been subjected to freezing temperatures may be rendered inactive.

Note: Parts may ship separately depending on configuration and storage conditions.

Materials not included in the kit

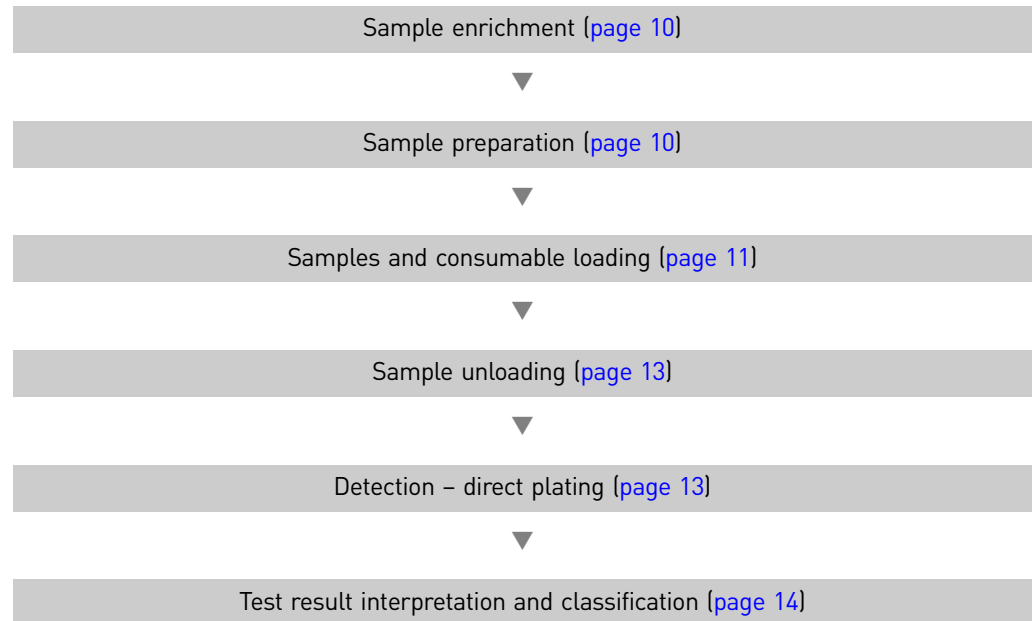
The following table includes materials and equipment for using (but not included in) the Pathatrix® consumables kits. Unless otherwise indicated, many of the listed items are available from major laboratory suppliers (MLS).

Item	Source
Equipment	
Incubator, 37 ±1°C	MLS
Incubator, 42 ±1°C	MLS
Anaerobic jar	MLS
Gas generation system (CampyGen Atmosphere Generation System, or equivalent)	Oxoid Product Codes CN0025 or CN0035, or equivalent
Pathatrix® Auto Instrument	Life Technologies Cat. no. PATHATRIXAUTO

Item	Source
Consumables	
Sterile bags for enrichment (Whirl-Pak® or Stomacher® bag, or equivalent)	Nasco # B01196WA, Seward product code BA6041, or equivalent
Optional for high-particulate or high-fat-content samples: Sterile filter bags for enrichment (Whirl-Pak® or Stomacher® bag, or equivalent)	Nasco # B01348WA, Seward product code BA6041/STR, or equivalent
Sterile, disposable 10-µL loops	MLS
Media	
See page 10 for recommendations about enrichment media choice. The media is supplied by several manufacturers (e.g., Oxoid [product codes shown], Difco, and Merck) in a dehydrated form and should be prepared according to the manufacturer's instructions.	
Preston Broth: <ul style="list-style-type: none"> • Preston Broth: Nutrient Broth No. 2 • Laked Horse Blood • <i>Campylobacter</i> Growth Supplement • Preston <i>Campylobacter</i> Selective Supplement (suitable for high background contamination and/or agar plate detection) 	<ul style="list-style-type: none"> • Oxoid product code CM0067 • Oxoid product code SR0048 • Oxoid product code SR0232 • Oxoid product code SR0117
Selective agar	
Modified CCDA: <ul style="list-style-type: none"> • mCCDA: <i>Campylobacter</i> agar base • CCDA selective supplement 	<ul style="list-style-type: none"> • Oxoid product code CM0739 • Oxoid product code SR0155
Reagents	
PBS, 10X, pH 7.4	Life Technologies Cat. no. AM9624 or AM9625

Product Information
Materials not included in the kit

Workflow



Procedural guidelines

- Use aseptic technique and good laboratory practices at all times.
- A facemask should be worn when weighing out powders.
- Care must be taken when boiling agar prior to autoclaving, and heat-resistant gloves should be worn when handling hot flasks of liquid.
- Take care when handling plates or vessels that contain microorganisms.
- Avoid generating aerosols, as pathogenic organisms may be present.
- Used or unused reagents, used media, sample enrichments, as well as other contaminated disposable materials should be disposed of following procedures for infectious or potentially infectious products.
- Sample enrichments might be contaminated with pathogenic organisms infectious to humans, so all waste must be treated as biohazardous and handled and disposed using safe laboratory practices, in accordance and compliance with all appropriate regulations.

Sample enrichment

1. Prepare a 1:10 dilution of the food sample using **prewarmed (42 ±1°C)** Preston Broth in a sterile bag.

Note: For example, add 25 g of food sample to 225 mL of prewarmed media.

IMPORTANT! It is critical that the enrichment media is prewarmed to 42 ±1°C prior to adding the food sample. To prevent cooling, all samples should then immediately be placed in the incubator at 42 ±1°C.

2. Homogenize the sample by massaging the sample between the fingers for 10–15 seconds to disperse any large clumps of material (Narang and Cray, 2006).
3. Reduce the headspace in the sterile bag as much as possible and then seal the bag to minimize air contact with the enrichment broth.
4. Incubate at **42 ±1°C** for a **minimum of 24 hours**.

Note: We recommend that sub-samples for analysis are processed immediately or, if storage is required, that the samples are refrigerated at 5 ±3°C. Samples should be rewarmed to 37 ±1°C prior to analysis on the Pathatrix® Auto Instrument.

Sample preparation

1. Remove the Sample and Elution Vessels from the consumable kit packaging and place into the Sample Vessel Holder.
2. Partially remove the lids from both vessels, making a large enough opening to allow the sample and wash buffer to be dispensed into the vessels.
3. Place 50 mL of your sample in the sample vessel.

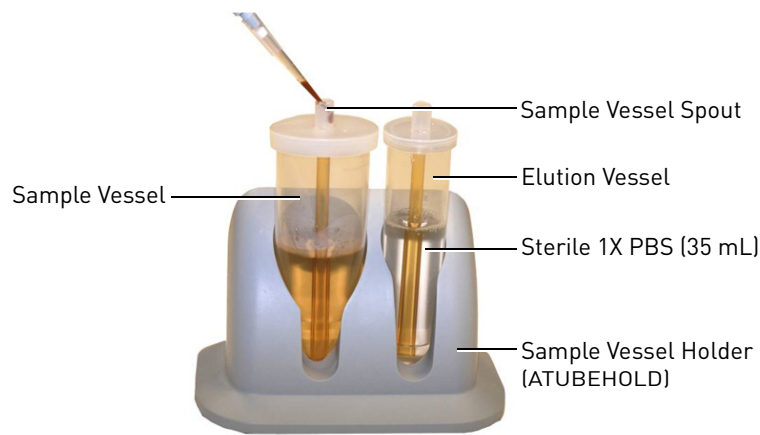
Note: If your sample is highly particulate or has a high fat content, a Seward plain sterile bag with internal strainer (Seward Product Code BA6041/STR or equivalent) may be used.

4. Store the individual enriched samples in microaerophilic conditions at 5 ±3°C for potential reanalysis until the test result is confirmed.

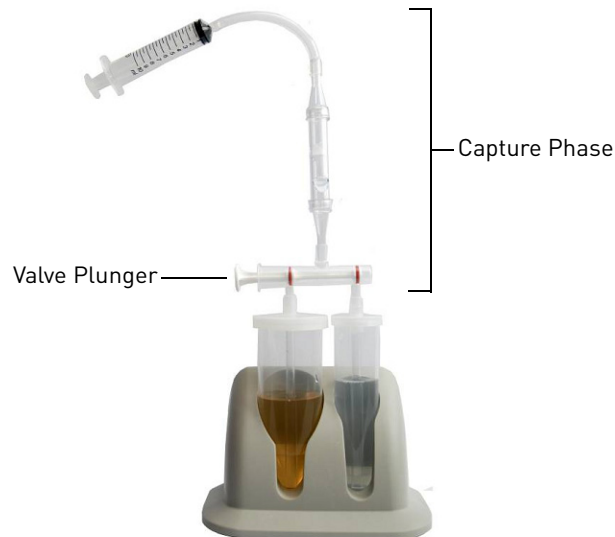
Note: Do not store for more than 24 hours. If refrigerated after enrichment, samples should be rewarmed to 37 ±1°C prior to removal of aliquots for analysis.

Samples and consumable loading

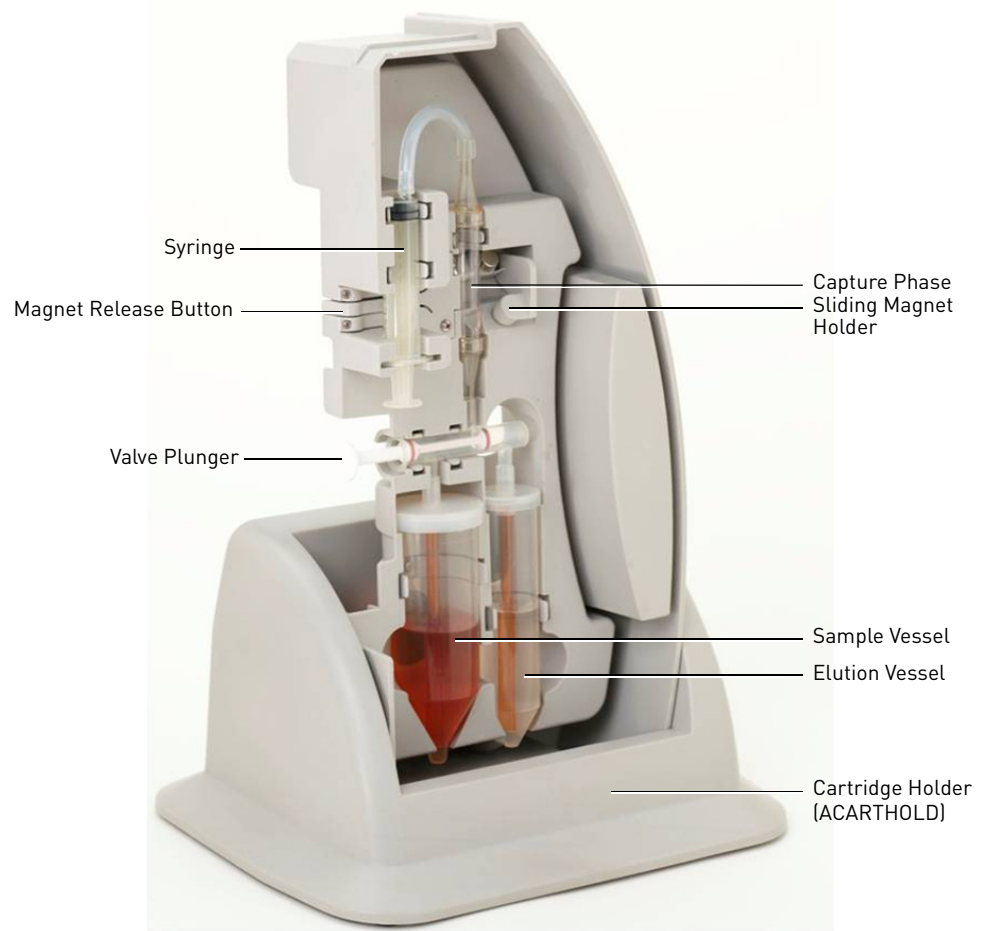
1. Add PBS (Cat. no. AM9624, diluted to 1X) to the fill line of the Elution Vessel (approximately 35 mL of 1X PBS).
2. Place the lids on to the Sample and Elution Vessels making sure that the vessels are sealed all the way around.
3. Ensure the Pathatrix® paramagnetic beads (included with the kit) are fully resuspended by agitating the bead vial (for example, by vortexing bead vial or inversion of sealed vial), and add 50 µL of the Pathatrix® paramagnetic bead suspension into the spout on the lid of the Sample Vessel.



4. Remove the capture-phase kit from the bag and orient with the valve plunger pointing left. Connect the valve firmly to the lids of the Sample and Elution Vessels.



5. Holding both vessels, lift the assembled vessels and attached capture-phase kit out of the Sample Vessel Holder.
6. Place the vessels into the Cartridge, pushing them in firmly from the bottom upwards.
7. Firmly push the remainder of the kit into the Cartridge, ensuring that the valve, the capture phase, and the syringe are all held securely in the molded recess of the Cartridge.
8. Push the magnet slider across into the locking position and press the magnet release button on the side of the Cartridge to ensure the kit is positioned correctly and the magnets can freely disengage from the capture phase.



9. Reset the magnets into the locking position.
10. Insert the Cartridge into the Pathatrix® Auto Instrument until it clicks into the locking position.
11. Press the numbered button above the appropriate Cartridge to start the run (approximately 14 minutes). The associated LED will turn green to indicate the run has started.

Sample unloading

1. At the end of the run, the LED will flash red and green alternately.
2. Press the button above the appropriate Cartridge to initialize the draining step (approximately 1 minute).
3. When the draining step is complete and the LED is illuminated red, remove the Cartridge by pulling it out, away from the instrument.
4. Remove the syringe from the Cartridge and carefully pull out the rest of the kit, starting at the top and working downwards. When removing the Sample and Elution Vessels from the Cartridge, hold firmly by the vessels themselves to prevent spillage.
5. Place both vessels in the Tube Rack (also known as the Sample Vessel Holder or rack).
6. Remove the lid from the Elution Vessel and, leaving the Elution Vessel in place in the rack, lift away the rest of the consumable, including the Sample Vessel, and discard.
7. Place the Elution Vessel in the rack and cap with a flat lid (provided in the kit). Leave in the rack for 1 minute to allow capture of the Pathatrix[®] paramagnetic beads.
8. Remove all the liquid from the Elution Vessel, without removing the vessel from the rack, taking care not to disturb the captured Pathatrix[®] paramagnetic beads.
9. Remove the Elution Vessel from the vessel holder, add 100 μ L of PBS into the Elution Vessel, and resuspend the Pathatrix[®] paramagnetic beads.

Detection – direct plating

Note: We recommend streaking the sample out to generate individual colonies, as opposed to spread plating.

1. Immediately pipet the remainder of the Pathatrix[®] paramagnetic bead suspension onto the edge of freshly prepared, well-dried *Campylobacter* Blood Free Selective Medium (for example, Modified CCDA, Preston, Karmali or similar selective agar plates).
2. Using a sterile 10- μ L inoculation loop, streak from this pool to generate isolated colonies.
3. Immediately invert the plate and incubate at **37 \pm 1°C for 24 hours** under microaerophilic conditions (for example, Campygen system, Oxoid).

A presumptive positive result is defined as the isolation of typical, suspicious, or atypical *Campylobacter* spp. colonies on the agar plates used.

A presumptive positive isolate should be subsequently confirmed by the use of subculture and appropriate biochemical and serological tests.

Test result interpretation and classification

The Pathatrix® *Campylobacter* spp. Kit is designed as a sample preparation method for presence/absence detection of *Campylobacter* spp. in food matrices.

Using the Pathatrix® *Campylobacter* spp. Kit (Individual Samples) Linked to Selective Agar Plates, presumptive results can be obtained, prior to confirmation, within 49 hours.

Once confirmed, the results are reported as:

- *Campylobacter* spp. **Detected** in 25 g (sample matrices)
- *Campylobacter* spp. **Not detected** in 25 g (sample matrices)



Background

Product overview

Description of target organisms

The genus *Campylobacter*, consisting of 11 species, is a member of the *Campylobacteraceae* family. *Campylobacter jejuni* and *Campylobacter fetus* are of clinical relevance to humans, although *Campylobacter jejuni* and *Campylobacter coli* are the primary causes of bacterial diarrheal illness in the United States, causing more cases of disease than *Shigella* and *Salmonella* combined. *Campylobacter jejuni* bacteria are the causative agent of Campylobacteriosis. Outbreaks have been associated with raw chicken, raw milk, raw clams, and non-chlorinated water.

Audience

The Pathatrix® *Campylobacter* spp. Kit is for professional use only and is intended for use by qualified users interested in determining the presence/absence of *Campylobacter* spp. in food samples. Users may include, but are not limited to, food producers, food processors, food manufacturers, retailers, and microbiology testing laboratories.

Sampling protocol

The standard food sample size used in the Pathatrix® Auto system is 25 g of food diluted with 225 mL of enrichment medium. We recommend that sub-samples removed for analysis are processed immediately. The remaining enriched sample should be stored in microaerophilic conditions until the test result has been obtained and confirmed. Samples should be rewarmed to 37 ±1°C prior to analysis with the Pathatrix® Auto system.

Kit sensitivity

The sample preparation procedure allows you to detect as few as 1–10 cfu from 25 g of food sample. The limitation of the Pathatrix® *Campylobacter* spp. Kit is in the ability of the target to reproduce in the enrichment medium, be captured by the magnet, and subsequently be isolated on selective agar plates.

CAUTION! The Pathatrix® kit has been evaluated on raw chicken food matrices. Given the wide variety of products and manufacturing procedures, we recommend that you check that the composition of the matrices to be tested does not affect the reliability of the results.

A negative result does not guarantee the absence of target organism in the original sample and may be due to the inability of the organism to adequately reproduce to required levels in the enrichment medium (with subsequent outgrowth on selective agar plates) potentially due to, but not limited to, competitive microflora, sub-lethal injury, or matrix inhibition.

Operating conditions

The Pathatrix[®] Auto Instrument is for indoor use only and for altitudes not exceeding 2000 m (6500 ft.) above sea level.

Temperature and humidity requirements	
Condition	Acceptable range
Temperature	5–40°C
Humidity	Maximum relative humidity 80% for temperatures up to 31°C, decreasing to 50%

Related materials from Life Technologies

Item	Cat. no.
Equipment	
Pathatrix® Auto Instrument	PATHATRIXAUTO
Cartridge Rack (optional for use with the Pathatrix® Auto Instrument; holds 5 Cartridges)	ACARTRACK
DynaMag™-2 Magnet (for use with microcentrifuge tubes)	123.21D
Reagents	
PBS, 10X, pH 7.4	AM9624 or AM9625
Related PCR assay	
TaqMan® <i>Campylobacter jejuni</i> Detection Kit	4366098



WARNING! GENERAL SAFETY. Using this product in a manner not specified in the user documentation may result in personal injury or damage to the instrument or device. Ensure that anyone using this product has received instructions in general safety practices for laboratories and the safety information provided in this document.

- Before handling chemicals, read and understand all applicable Safety Data Sheets (SDSs) and use appropriate personal protective equipment (gloves, gowns, eye protection, etc). To obtain SDSs, see the [“Documentation and Support”](#) section in this document.
-

Chemical safety



WARNING! GENERAL CHEMICAL HANDLING. To minimize hazards, ensure laboratory personnel read and practice the general safety guidelines for chemical usage, storage, and waste provided below, and consult the relevant SDS for specific precautions and instructions:

- Read and understand the Safety Data Sheets (SDSs) provided by the chemical manufacturer before you store, handle, or work with any chemicals or hazardous materials. To obtain SDSs, see the [“Documentation and Support”](#) section in this document.
- Minimize contact with chemicals. Wear appropriate personal protective equipment when handling chemicals (for example, safety glasses, gloves, or protective clothing).
- Minimize the inhalation of chemicals. Do not leave chemical containers open. Use only with adequate ventilation (for example, fume hood).
- Check regularly for chemical leaks or spills. If a leak or spill occurs, follow the manufacturer's cleanup procedures as recommended in the SDS.
- Handle chemical wastes in a fume hood.
- Ensure use of primary and secondary waste containers. (A primary waste container holds the immediate waste. A secondary container contains spills or leaks from the primary container. Both containers must be compatible with the waste material and meet federal, state, and local requirements for container storage.)
- After emptying a waste container, seal it with the cap provided.

- Characterize (by analysis if necessary) the waste generated by the particular applications, reagents, and substrates used in your laboratory.
- Ensure that the waste is stored, transferred, transported, and disposed of according to all local, state/provincial, and/or national regulations.
- **IMPORTANT!** Radioactive or biohazardous materials may require special handling, and disposal limitations may apply.

Specific chemical handling

CAS	Chemical	Phrase
26628-22-8	Sodium Azide	Sodium azide may react with lead and copper plumbing to form highly explosive metal azides.

Biological hazard safety



WARNING! BIOHAZARD. Biological samples such as tissues, body fluids, infectious agents, and blood of humans and other animals have the potential to transmit infectious diseases. Follow all applicable local, state/provincial, and/or national regulations. Wear appropriate protective equipment, which includes but is not limited to: protective eyewear, face shield, clothing/lab coat, and gloves. All work should be conducted in properly equipped facilities using the appropriate safety equipment (for example, physical containment devices). Individuals should be trained according to applicable regulatory and company/institution requirements before working with potentially infectious materials. Read and follow the applicable guidelines and/or regulatory requirements in the following:

In the U.S.:

- U.S. Department of Health and Human Services guidelines published in Biosafety in Microbiological and Biomedical Laboratories found at: www.cdc.gov/biosafety
- Occupational Safety and Health Standards, Bloodborne Pathogens (29 CFR§1910.1030), found at: www.access.gpo.gov/nara/cfr/waisidx_01/29cfr1910a_01.html
- Your company's/institution's Biosafety Program protocols for working with/handling potentially infectious materials.
- Additional information about biohazard guidelines is available at: www.cdc.gov

In the EU:

Check local guidelines and legislation on biohazard and biosafety precaution and refer to the best practices published in the World Health Organization (WHO) Laboratory Biosafety Manual, third edition, found at: www.who.int/csr/resources/publications/biosafety/WHO_CDS_CSR_LYO_2004_11/en/

Documentation and Support

Obtaining SDSs

Safety Data Sheets (SDSs) are available from www.lifetechnologies.com/support.

Note: For the SDSs of chemicals not distributed by Life Technologies, contact the chemical manufacturer.

Obtaining Certificates of Analysis

The Certificate of Analysis provides detailed quality control and product qualification information for each product. Certificates of Analysis are available on our website. Go to www.lifetechnologies.com/support and search for the Certificate of Analysis by product lot number, which is printed on the box.

Obtaining support

Support email: foodsafety@lifetech.com

For the latest services and support information for all locations, go to:

www.lifetechnologies.com/support

At the website, you can:

- Access worldwide telephone and fax numbers to contact Technical Support and Sales facilities
- Search through frequently asked questions (FAQs)
- Search for user documents, SDSs, application notes, formulations, handbooks, certificates of analysis, citations, and other product support documents
- Obtain information about customer training

Limited product warranty

Life Technologies Corporation and/or its affiliate(s) warrant their products as set forth in the Life Technologies' General Terms and Conditions of Sale found on Life Technologies' website at www.lifetechnologies.com/termsandconditions. If you have any questions, please contact Life Technologies at www.lifetechnologies.com/support.

Reference

Narang, N. and Cray, W.C. 2006. Evaluation of Hand Mixing of Ground Beef and Poultry Samples as an Alternative to Stomaching for the Detection of *Salmonella*. *Food Protection Trends*. 26:14–19.

Headquarters

5791 Van Allen Way | Carlsbad, CA 92008 USA | Phone +1 760 603 7200 | Toll Free in USA 800 955 6288

For support visit www.lifetechnologies.com/support or email techsupport@lifetech.com

www.lifetechnologies.com

