

NHS-Rhodamine

46406

2083.1

Number

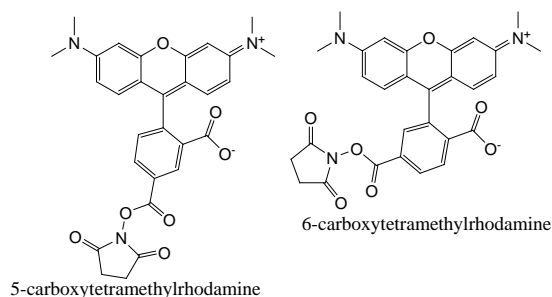
46406

Description
NHS-Rhodamine, 25mg

 Chemical name: 5-(and 6)-
 carboxytetramethylrhodamine,
 succinimidyl ester

Molecular weight: 528

Ex/Em wavelength: 552/575nm

 Extinction coefficient: $80,000\text{M}^{-1}\text{cm}^{-1}$
 (in aqueous buffer at pH 9.0)

Introduction

Thermo Scientific™ NHS-Rhodamine is an amine-reactive fluorescent labeling reagent that absorbs green visible light (552nm) and emits orange-red visible light (575nm). Rhodamine displays lower sensitivity to pH than fluorescein and is more photostable; however, rhodamine conjugates have a significantly lower quantum yield than fluorescein conjugates.

N-Hydroxysuccinimide (NHS)-ester labeling reagents are the simplest and most commonly used reagents for labeling proteins. NHS esters react efficiently with primary amino groups ($-\text{NH}_2$) in pH 7-9 buffers to form stable amide bonds. The reaction results in the release of *N*-hydroxysuccinimide. Proteins, including antibodies, generally have several primary amines in the side chain of lysine (K) residues that are available as targets for NHS-ester reagents.

Important Product Information

- NHS-Rhodamine is moisture-sensitive. To avoid moisture condensation onto the product, the vial must be equilibrated to room temperature before opening.
- Prepare this reagent immediately before use. The NHS-ester moiety readily hydrolyzes and becomes non-reactive; therefore, do not prepare stock solutions for storage. Discard any unused reconstituted labeling reagent.
- Hydrolysis of the NHS ester is a competing reaction and increases with increasing pH. Hydrolysis occurs more readily in dilute protein or peptide solutions. In concentrated protein solutions, the acylation reaction is favored.

Example Protocol for Antibody Labeling with NHS- Rhodamine
A. Materials Required

- Dimethylformamide (DMF; Product No. 20673) or Dimethylsulfoxide (DMSO; Product No. 20688)
- Conjugation Buffer: 0.1M sodium phosphate, 0.15M sodium chloride; pH 7.2 (PBS, Product No. 28372). Other non-amine-containing buffers at pH 7-9, such as Thermo Scientific™ BupH™ Borate Buffer Packs, Product No. 28384 (Product No. 28372); 20mM HEPES; and 100mM carbonate/bicarbonate may also be used. Do not use buffers that contain primary amines (e.g., Tris or glycine) because they will react with the NHS-ester moiety and compete with the intended reaction.
- Device to remove excess dye, such as the Thermo Scientific™ Fluorescent Dye Removal Columns (Product No. 22858), Zeba™ Desalt Spin Column (Product No. 89891) or a Slide-A-Lyzer™ Dialysis Cassette, 10K MWCO (Product No. 66380)

B. Antibody Preparation

- If the antibody is lyophilized and salt-free, dissolve it in Conjugation Buffer. For each labeling reaction, use 50µL to 1mL of purified antibody sample at a concentration from 1-10mg/mL. After reconstitution, proceed to Calculations section.
- If the antibody is already in solution, exchange the buffer with Conjugation Buffer by dialysis or desalting.

C. Calculations

Perform the following calculations before beginning the Labeling Reaction. The amount of NHS-Rhodamine to use for each reaction depends on the amount of the protein to be labeled. By using the appropriate molar ratio of labeling reagent to protein, the extent of conjugation can be controlled. When conjugating proteins with NHS-Rhodamine, a 10- to 15-fold molar excess of the fluorescent dye is optimal; however, this ratio may be varied to alter the degree of labeling.

1. Calculate millimoles of NHS-Rhodamine labeling reagent to add to the reaction:

$$\text{mL protein} \times \frac{\text{mg protein}}{\text{mL protein}} \times \frac{\text{mmol protein}}{\text{mg protein}} \times \frac{10 \text{ mmol NHS-Rhodamine}}{\text{mmol protein}} = \text{mmol NHS-Rhodamine}$$

2. Calculate microliters of NHS-Rhodamine solution to add to the reaction:

$$\text{mmol NHS-Rhodamine} \times \frac{528 \text{ mg}}{\text{mmol NHS-Rhodamine}} \times \frac{100 \mu\text{L}}{1 \text{ mg}} = \mu\text{L NHS-Rhodamine}$$

- 10 = Recommended molar ratio of NHS-Rhodamine to protein
- 528 = Molecular weight of NHS-Rhodamine
- 100 = Microliters of solvent in which the 1mg of NHS-Rhodamine is dissolved

EXAMPLE:

For 1mL of a 1mg/mL solution of IgG (150,000Da), 3.5µL NHS-Rhodamine will be used.

$$1 \text{ mL IgG} \times \frac{1 \text{ mg IgG}}{1 \text{ mL IgG}} \times \frac{\text{mmol IgG}}{150,000 \text{ mg IgG}} \times \frac{10 \text{ mmol NHS-Rhodamine}}{\text{mmol IgG}} = 0.00007 \text{ mmol NHS-Rhodamine}$$

$$0.00007 \text{ mmol NHS-Rhodamine} \times \frac{528 \text{ mg}}{\text{mmol NHS-Rhodamine}} \times \frac{100 \mu\text{L}}{1 \text{ mg}} = 3.5 \mu\text{L}$$

D. Labeling Reaction

Note: To protect the reagent from moisture, allow the vial of NHS-Rhodamine to equilibrate to room temperature before opening.

Note: Using a high molar excess with antibody in borate or carbonate buffer (pH 8.5 or pH 9.0, respectively) could cause antibody or dye precipitation. For initial reaction use PBS for conjugation.

1. Transfer the antibody solution to a reaction tube.
2. Dissolve NHS-Rhodamine at 10mg/mL in DMF or DMSO. Mix thoroughly.
3. Transfer the appropriate amount of dye (from **Calculations** Section) to the antibody solution and mix well.
4. Incubate the reaction at room temperature for 1 hour or on ice for 2 hours.
5. Remove non-reacted NHS-Rhodamine by dialysis or gel filtration, or with a Dye Removal Column. Use the Thermo Scientific™ BCA Protein Assay Reagent Kit (Product No. 23225) to estimate protein concentration.
6. Store Rhodamine-labeled protein at 4°C protected from light until ready to use. To prevent microbial contamination, add a preservative such as sodium azide to a final concentration of 0.1%.

E. Calculate the Degree of Labeling

Note: The non-reacted dye must be completely removed for optimal results and accurate fluor-to-protein ratio determination.

1. Use a 1cm path length cuvette to measure the absorbance of the labeled protein at 280nm and 555nm. It may be necessary to dilute a small amount of the desalted/dialyzed sample.

2. Calculate the concentration of the protein in the sample:

- $\epsilon_{\text{protein}}$ = protein molar extinction coefficient (e.g., the molar extinction coefficient of IgG is $\sim 210,000 \text{ M}^{-1} \text{ cm}^{-1}$)
- $A_{\text{max}} = A_{555}$
- CF = Correction factor = $\frac{A_{280}}{A_{\text{max}}}$; CF for Rhodamine = 0.3400

$$\text{Protein concentration (M)} = \frac{A_{280} - (A_{\text{max}} \times \text{CF})}{\epsilon_{\text{protein}}} \times \text{dilution factor}$$

3. Calculate the degree of labeling:

- ϵ' = Rhodamine molar extinction coefficient = $80,000 \text{ M}^{-1} \text{ cm}^{-1}$

$$\text{Moles fluor per mole protein} = \frac{A_{\text{max}} \text{ of the labeled protein}}{\epsilon' \times \text{protein concentration (M)}} \times \text{dilution factor}$$

Additional Information Available on Our Website

- Tech Tip #43: Protein stability and storage
- Tech Tip #6: Extinction coefficients guide
- Tech Tip #31: Calculate dye:protein (F/P) molar ratios

Related Thermo Scientific Products

28384	BupH Borate Buffer Packs, 40 packs
28372	BupH Phosphate Buffered Saline Packs, 40 packs
22858	Fluorescent Dye Removal Columns
66380	Slide-A-Lyzer Dialysis Cassette, 10K MWCO
89890	Zeba Desalt Spin Columns, 2 ml, 25 each, for 200-700 μl samples
53031	Pierce NHS-Rhodamine Antibody Labeling Kit
53027	Pierce FITC Antibody Labeling Kit
53029	Pierce NHS-Fluorescein Antibody Labeling Kit

General References

Harlow, E. and Lane, D. (1988). Antibodies; A laboratory manual. Cold Spring Harbor Laboratory, New York, **409**.

Fluorescent Antibody Techniques and their Application. Ed. by A. Kawamura Jr., 1977, Univ. of Tokyo Press, Baltimore.

Products are warranted to operate or perform substantially in conformance with published Product specifications in effect at the time of sale, as set forth in the Product documentation, specifications and/or accompanying package inserts ("Documentation"). No claim of suitability for use in applications regulated by FDA is made. The warranty provided herein is valid only when used by properly trained individuals. Unless otherwise stated in the Documentation, this warranty is limited to one year from date of shipment when the Product is subjected to normal, proper and intended usage. This warranty does not extend to anyone other than Buyer. Any model or sample furnished to Buyer is merely illustrative of the general type and quality of goods and does not represent that any Product will conform to such model or sample.

NO OTHER WARRANTIES, EXPRESS OR IMPLIED, ARE GRANTED, INCLUDING WITHOUT LIMITATION, IMPLIED WARRANTIES OF MERCHANTABILITY, FITNESS FOR ANY PARTICULAR PURPOSE, OR NON INFRINGEMENT. BUYER'S EXCLUSIVE REMEDY FOR NON-CONFORMING PRODUCTS DURING THE WARRANTY PERIOD IS LIMITED TO REPAIR, REPLACEMENT OF OR REFUND FOR THE NON-CONFORMING PRODUCT(S) AT SELLER'S SOLE OPTION. THERE IS NO OBLIGATION TO REPAIR, REPLACE OR REFUND FOR PRODUCTS AS THE RESULT OF (I) ACCIDENT, DISASTER OR EVENT OF FORCE MAJEURE, (II) MISUSE, FAULT OR NEGLIGENCE OF OR BY BUYER, (III) USE OF THE PRODUCTS IN A MANNER FOR WHICH THEY WERE NOT DESIGNED, OR (IV) IMPROPER STORAGE AND HANDLING OF THE PRODUCTS.

Unless otherwise expressly stated on the Product or in the documentation accompanying the Product, the Product is intended for research only and is not to be used for any other purpose, including without limitation, unauthorized commercial uses, in vitro diagnostic uses, ex vivo or in vivo therapeutic uses, or any type of consumption by or application to humans or animals.

Current product instructions are available at www.thermoscientific.com/pierce. For a faxed copy, call 800-874-3723 or contact your local distributor.

© 2013 Thermo Fisher Scientific Inc. All rights reserved. All (other) trademarks are the property of Thermo Fisher Scientific Inc. and its subsidiaries. Printed in the USA.