

GeneRuler High Range DNA Ladder

Catalog Number SM1351, SM1352

Pub. No. MAN0013052 Rev. E.00



WARNING! Read the Safety Data Sheets (SDSs) and follow the handling instructions. Wear appropriate protective eyewear, clothing, and gloves. Safety Data Sheets (SDSs) are available from thermofisher.com/support.

Contents and storage

Cat. No.	Contents	Amount	Storage
SM1351	GeneRuler High Range DNA Ladder	50 µg (for 150 applications), 0.5 µg/µL	-25 °C to -15 °C
	6X DNA Loading Dye	1 mL	
SM1352	GeneRuler High Range DNA Ladder	250 (5 x 50) µg (for 800 applications), 0.5 µg/µL	
	6X DNA Loading Dye	2 x 1 mL	

Description

Thermo Scientific™ GeneRuler™ High Range DNA Ladder is designed for sizing and approximate quantification of high molecular weight DNA fragments on low percentage agarose gels in relatively short time. It takes only 1.5 hours to obtain complete separation of ladder's bands in 0.4 % agarose gel.

The ladder is composed of 8 purified individual DNA fragments (in base pairs): 48502, 24508, 20555, 17000, 15258, 13825, 12119, 10171.

The ladder is dissolved in TE buffer and should be premixed with the supplied 6X DNA Loading Dye prior to loading on the gel.

Storage Buffer (TE buffer)

10 mM Tris-HCl (pH 7.6) and 1 mM EDTA.

6X DNA Loading Dye

10 mM Tris-HCl (pH 7.6), 0.03 % bromophenol blue, 0.03 % xylene cyanol FF, 60 % glycerol and 60 mM EDTA.

Protocol for Loading

Loading mixture for the 8 mm agarose gel lane*:

DNA ladder	0.6 µL
6X DNA Loading Dye	3 µL
Deionized water	14.4 µL
	<hr/> 18µL

Step 1: Mix gently

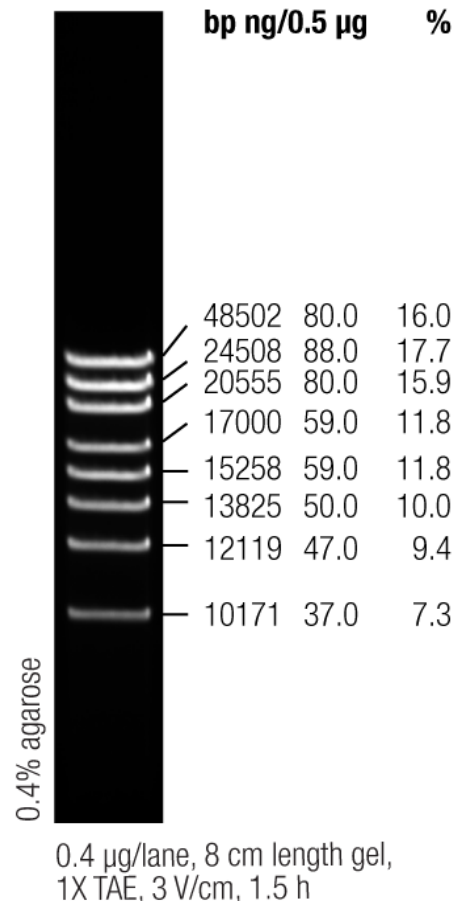
Step 2: Load on the low percentage agarose gel. Run electrophoresis at 3 V/cm for 1.5 h. Higher voltage may result in incomplete separation of upper bands.

* For gels with other lane widths, the components of the mixture should be scaled either up or down. Use 0.08 µL (0.04 µg) of DNA ladder per 1 mm of lane width.

Recommendations

- Do not heat before loading.
- Dilute your DNA sample with the 6X DNA Loading Dye. Mix 1 volume of the dye solution with 5 volumes of the DNA sample. The dye (#R0611) is supplied with the ladder.
- Load the same volumes of the DNA sample and the DNA ladder;
- For quantification, adjust the concentration of the sample to equalize it approximately with the amount of DNA in the nearest band of the Ladder.
- Use 1X TAE buffer for electrophoresis.
- For DNA band visualization with SYBR[™] Green and other intercalating dyes, do not add the dyes into the sample, use gel staining after electrophoresis or include dyes into agarose gel to avoid aberrant DNA migration.
- **Important note:** For DNA band visualization with GelRed[™] use gel staining after electrophoresis to avoid aberrant DNA migration.

GeneRuler High Range DNA Ladder



Limited product warranty

Life Technologies Corporation and/or its affiliate(s) warrant their products as set forth in the Life Technologies' General Terms and Conditions of Sale at www.thermofisher.com/us/en/home/global/terms-and-conditions.html. If you have any questions, please contact Life Technologies at www.thermofisher.com/support.



Thermo Fisher Scientific Baltics UAB | V.A. Graiciuno 8, LT-02241 Vilnius, Lithuania
For descriptions of symbols on product labels or product documents, go to thermofisher.com/symbols-definition.

The information in this guide is subject to change without notice.

DISCLAIMER: TO THE EXTENT ALLOWED BY LAW, THERMO FISHER SCIENTIFIC INC. AND/OR ITS AFFILIATE(S) WILL NOT BE LIABLE FOR SPECIAL, INCIDENTAL, INDIRECT, PUNITIVE, MULTIPLE, OR CONSEQUENTIAL DAMAGES IN CONNECTION WITH OR ARISING FROM THIS DOCUMENT, INCLUDING YOUR USE OF IT.

Important Licensing Information: These products may be covered by one or more Limited Use Label Licenses. By use of this product, you accept the terms and conditions of all applicable Limited Use Label Licenses.

©2019 Thermo Fisher Scientific Inc. All rights reserved. All trademarks are the property of Thermo Fisher Scientific and its subsidiaries unless otherwise specified. GelRed is a registered trademark of Biotium Inc.

thermofisher.com/support | thermofisher.com/askaquestion

thermofisher.com

11 October 2019

ThermoFisher
SCIENTIFIC