



Contents

Catalog No. Amount
12352019 100 applications



Kit contents



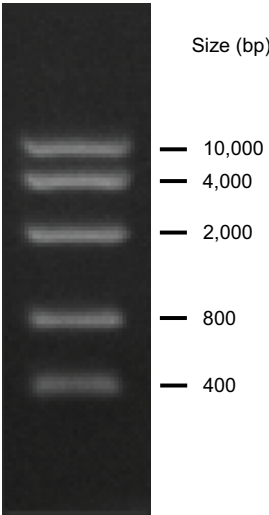
Storage

- Product is shipped at [ambient temperature](#).
- Store at room temperature or at 4°C for up to 6 months, or at –20°C for long term storage.



Product description

- The Invitrogen™ E-Gel™ 96 High Range DNA Ladder is designed for sizing and quantification of double stranded DNA on 1% E-Gel™ agarose gels.
- The E-Gel™ 96 High Range DNA Ladder consists of 5 individual chromatography-purified DNA fragments ranging in size from 400 bp to 10,000 bp.
- The ladder is supplied with 1X E-Gel™ Sample Loading Buffer for sample DNA.



Online resources

- Visit our [product pages](#) for additional information and protocols.
- Go online to view related [DNA ladders and markers](#).
- For support, visit thermofisher.com/support.



Required materials

- E-Gel™ E-Gel™ EX or E-Gel™ Agarose Gel with SYBR™ Safe (See **Choosing the right DNA ladder for your E-Gel™ agarose gel**)
- TE Buffer (Cat. No. AM9858)
- Ultrapure™ DNase/RNase-Free Distillated Water (Cat. No. 10977023)



Important guidelines

- Do not heat the E-Gel™ 96 High Range DNA Ladder before loading.
- Load the same volume of DNA sample and DNA ladder.
- For quantification, adjust the concentration of the sample to equalize it approximately with the amount of DNA in the nearest band of the ladder.
- Dilute sample DNA in TE buffer to avoid degradation of DNA sample.



Choosing the right DNA ladder for your E-Gel™ agarose gel



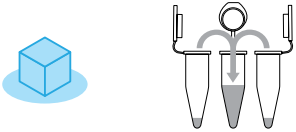
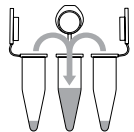
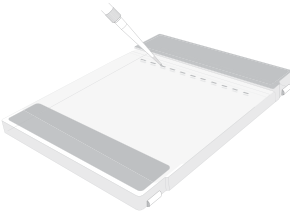
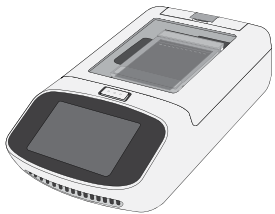

Troubleshooting



Limited product warranty and disclaimer details

Prepare DNA ladders and samples for electrophoresis

This protocol provides a brief description of how to use the DNA ladder with E-Gel™ agarose gels. For detailed instructions on using specific types of E-Gel™ agarose gels, go to thermofisher.com or contact Technical Support.

Step		Action																		
1		Prepare DNA ladder <ol style="list-style-type: none"> Thaw, mix and briefly centrifuge DNA ladder before use. Prepare DNA ladder. <ul style="list-style-type: none"> For E-Gel™ EX Agarose Gels, mix 5 µL of DNA ladder with 15 µL of water. For E-Gel™ Agarose Gels, mix and use the ladder without dilution. For E-Gel™ 96 Agarose Gels, mix and use the ladder without dilution. 																		
2		Prepare samples <ol style="list-style-type: none"> Dilute your sample 2- to 10-fold with TE Buffer (Cat. No. AM9858), 1X E-Gel™ Sample Loading Buffer (Cat No. 10482055), or water. Mix gently. 																		
3		Load samples and DNA ladders <ol style="list-style-type: none"> Load 20 µL of DNA ladders and DNA samples into the appropriate wells of the E-Gel™ agarose gel. Add water to any empty wells, so that all wells contain an equal volume of liquid. 																		
4		Perform electrophoresis <ol style="list-style-type: none"> Choose the appropriate E-Gel™ run protocol for your gel type based on the electrophoresis device being used. <table border="1"> <thead> <tr> <th>Gel type</th><th>Program</th><th>Recommended run time</th></tr> </thead> <tbody> <tr> <td colspan="3">E-Gel™ Power Snap Electrophoresis Device (Cat. No. G8100)</td></tr> <tr> <td>E-Gel™ EX Agarose Gel (1%, 2%)</td><td>E-Gel EX 4 1-2%</td><td>15 min (20 min max)</td></tr> <tr> <td>E-Gel™ Agarose Gel (0.8%, 1.2%, 2%)</td><td>E-Gel 0.8-2%</td><td>26 min (40 min max)</td></tr> <tr> <td colspan="3">E-Gel™ E-Base™ Device</td></tr> <tr> <td>E-Gel™ 96 Agarose Gel (1%, 2%)</td><td>EG</td><td>12 min</td></tr> </tbody> </table> Run the program to start electrophoresis. 	Gel type	Program	Recommended run time	E-Gel™ Power Snap Electrophoresis Device (Cat. No. G8100)			E-Gel™ EX Agarose Gel (1%, 2%)	E-Gel EX 4 1-2%	15 min (20 min max)	E-Gel™ Agarose Gel (0.8%, 1.2%, 2%)	E-Gel 0.8-2%	26 min (40 min max)	E-Gel™ E-Base™ Device			E-Gel™ 96 Agarose Gel (1%, 2%)	EG	12 min
Gel type	Program	Recommended run time																		
E-Gel™ Power Snap Electrophoresis Device (Cat. No. G8100)																				
E-Gel™ EX Agarose Gel (1%, 2%)	E-Gel EX 4 1-2%	15 min (20 min max)																		
E-Gel™ Agarose Gel (0.8%, 1.2%, 2%)	E-Gel 0.8-2%	26 min (40 min max)																		
E-Gel™ E-Base™ Device																				
E-Gel™ 96 Agarose Gel (1%, 2%)	EG	12 min																		
5		Visualize agarose gel <p>Visualize DNA ladder and samples.</p> <ul style="list-style-type: none"> Use the E-Gel™ Power Snap Camera (Cat. No. G8200), E-Gel™ Imager (Cat. No. 466612), or other blue light imager to detect DNA bands stained with SYBR™ stains. UV transilluminator to detect DNA bands stained with ethidium bromide. 																		