



Key Code TSMX9409A
www.oxid.com/ifu

US 1 855 236 0910

CA 1 855 805 8539

ROW +31 20 794 7071

Thrombo-Wellcotest Collection Tubes EN

REF R30853001 100 Tubes

1. INTENDED USE

Thrombo-Wellcotest™ Collection Tubes are a supplementary component intended for use with Thrombo-Wellcotest kit, which contain all components necessary for rapid semi-quantitative testing of human serum and urine samples for the presence of fibrin/fibrinogen degradation products (FDP). **For complete information and correct use of this product, please refer to the Instructions For Use which accompanies the Thrombo-Wellcotest kit (R30852601).**

IVD For *in vitro* diagnostic use only. For professional use only.

2. DESCRIPTION, PREPARATION FOR USE AND RECOMMENDED STORAGE CONDITIONS



The Sample Collection Tubes may be stored at 2 to 25°C. Stable until the expiration date marked on the carton.

Please refer to the manufacturer's safety data sheet and the product labelling for information on potentially hazardous components.



Sample Collection Tubes:

100 glass tubes containing soya bean trypsin inhibitor (approximately 3600 NF units/tube) and *Bothrops atrox* venom (>10 µg/tube) for the collection of 2 ml whole blood or urine.

3. REMOVAL OF HEMOGARD CLOSURE:

- Grasp Sample Collection Tube with one hand, placing the thumb under the HEMOGARD closure.
- Using the other hand, grasp the closure as shown in the diagram. (fig. 1)
- Twist and pull HEMOGARD closure while simultaneously pushing up with thumb of other hand.



fig. 1

NOTE: ONE HANDED TECHNIQUE OR THUMB ROLLS IS NOT RECOMMENDED FOR THE REMOVAL OF THE HEMOGARD CLOSURE.

If plastic cap separates from rubber stopper, DO NOT REASSEMBLE.

Carefully remove rubber stopper from the tube.

All blood specimens and devices used to collect or store blood should be carefully handled and disposed of in conformity with the "universal precautions" recommendations of the CDC and NCCLS.

REPLACEMENT OF HEMOGARD CLOSURE:

- With one hand, hold the unstoppered Sample Collection Tube.
- Using the other hand, place the HEMOGARD closure over the tube and gently push until the HEMOGARD closure is fully seated.

4. DIRECTIONS FOR USE:

To ensure proper specimen collection and to prevent possible backflow from the tube, it is important to take these precautions (see fig. 2):

- Select site for venepuncture.
- Apply tourniquet. Prepare site with appropriate antiseptic.
- Perform venepuncture with the patient's arm in a downward position with the stopper uppermost.
- Push tube to end of holder, puncturing stopper diaphragm.
- Remove tourniquet as soon as blood begins to fill the tube.
- Tube contents should not come in contact with the needle during the procedure.

5. RECOMMENDED ORDER OF DRAW:

- Blood culture tubes.
- Tubes with no additives.
- Coagulation tubes.
- Tubes with additives.

6. SYMBOL LEGEND

| | |
|------------------|-------------------------------------------|
| REF | Catalogue Number |
| IVD | <i>In Vitro</i> Diagnostic Medical Device |
| | Consult Instructions for Use (IFU) |
| | Temperature Limitations (Storage temp.) |
| LOT | Batch Code (Lot Number) |
| | Use By (Expiration Date) |
| | Do not reuse |
| STERILE R | Sterilised using irradiation |
| | Manufactured by |

IFU X9409A Revised August 2022

Printed in the UK

Remel Europe Ltd.
Clipper Boulevard West, Crossways
Dartford, Kent, DA2 6PT, UK

For technical assistance please contact your local distributor.

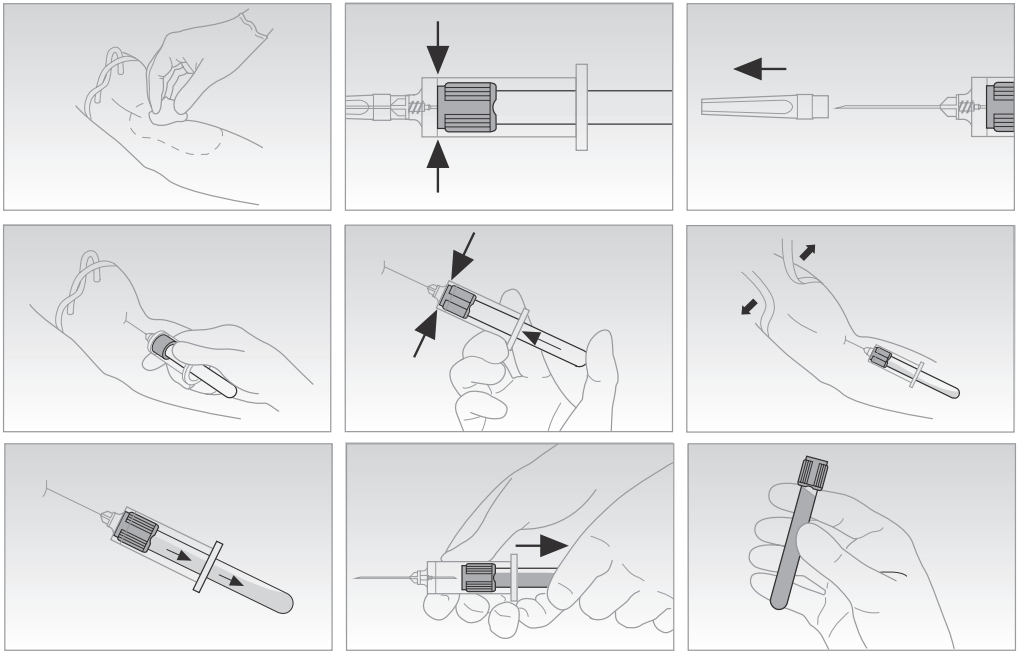


fig. 2