

Thermo Scientific Homogenizer Laboratory Blender

IMPORTANT:

- Use and maintenance of the Homogenizer should only be carried out by qualified staff.
- Always connect the Homogenizer to an earthed power source.
- For normal use, do not run the Homogenizer for more than 15 minutes non-stop.
- For your safety and for best work quality, please read the complete user guide supplied with the unit.

1. Place the Thermo Scientific™ Homogenizer Laboratory Blender on a flat and horizontal surface.
2. Connect the power cord. (Fig. 1)
3. Check that the drip tray has been correctly positioned inside the unit. (Fig. 2a)
4. Put the On/Off switch to "I". (Fig. 2b)
5. Set the required blending time and blending speed. (Fig. 3)
6. Adjust the paddles position with the handle according to the nature and size of the sample. (Fig. 4)
7. Open the door by pulling forward the handle. Place inside the unit the filter-bag containing the sample and diluant. (Fig. 5a)
8. Hold the bag upright while closing the door. Push the handle as far back as possible to start the blending process. (Fig. 5b)
9. The Homogenizer starts, blends the sample and stops automatically.
10. Open the door and take out the bag. The sample is now blended.

Figure 1

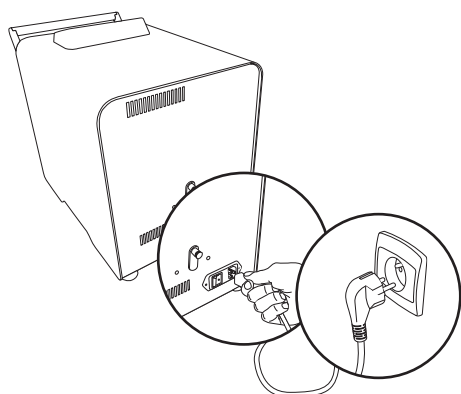


Figure 3

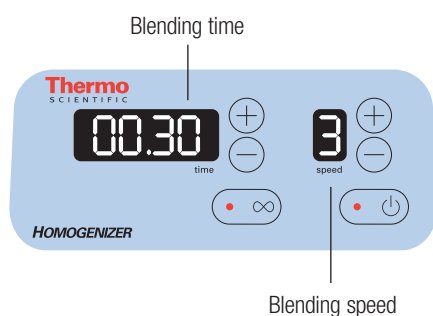


Figure 5

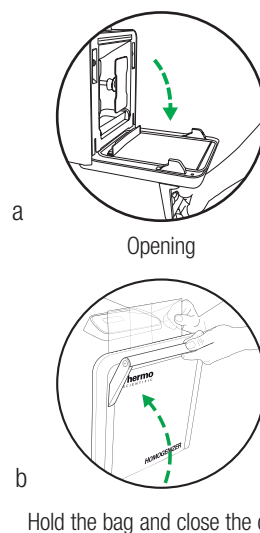


Figure 2

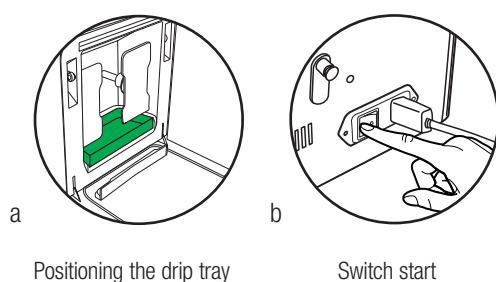
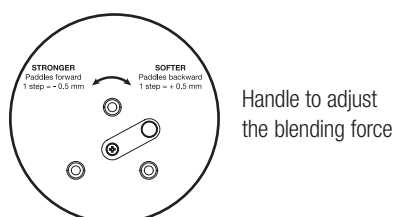


Figure 4



Thermo
SCIENTIFIC

Quick cleaning with the Click & Clean® system

1. Put the switch to "0". Disconnect from the power source.
2. Slide the Homogenizer to the front edge of the work surface. (Fig. 6)
3. Open the door as far as possible by pulling the handle forwards. (Fig. 7)
4. Remove, clean and disinfect the drip tray.
5. To remove the paddles, unclick them one after the other. (Fig. 8)
6. Clean and disinfect the blending chamber using appropriate cleaning products. (Fig. 9)
7. Replace the paddles by clicking them into place (Fig. 10) then reposition the drip tray.
8. After cleaning, once the unit is dry, reconnect the power cord.

Figure 6

Position

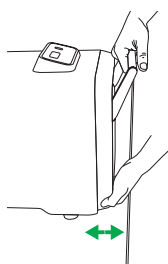


Figure 7

Open

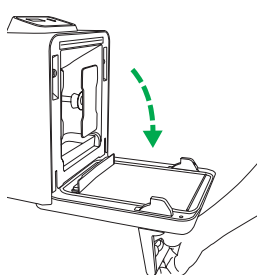


Figure 8

Unclick

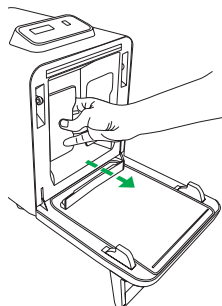


Figure 9

Clean

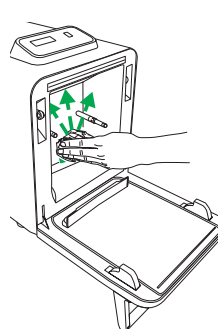
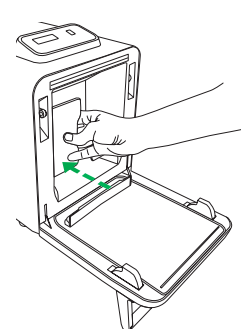


Figure 10

Reclick



Troubleshooting

Technical problems	Solutions
The unit does not start.	<ol style="list-style-type: none"> 1. Is the power cord connected? 2. Is the On/Off switch in position "I"? (Fig. 2) 3. Is the door correctly positioned and closed? <i>Be careful not to force.</i> 4. Have you checked the fuses?
The blending is unsatisfactory.	<ol style="list-style-type: none"> 1. Adjust the paddles with the handle at the back of the unit. <i>(See the chapter "Setting the blending force" in the user handbook)</i> 2. Is the timer correctly set?
The bags often leak during or at the end of the blending process.	Do you use good quality bags? We recommend filter bags.

[thermoscientific.com/microbiology](https://www.thermoscientific.com/microbiology)

© 2015 Thermo Fisher Scientific Inc. All rights reserved. Click & Clean is a trademark of INTERSCIENCE. All other trademarks are the property of Thermo Fisher Scientific and its subsidiaries. This information is presented as an example of the capabilities of Thermo Fisher Scientific products. It is not intended to encourage use of these products in any manners that might infringe the intellectual property rights of others. Specifications, terms and pricing are subject to change. Not all products are available in all countries. Please consult your local sales representative for details.

Contact details

United States
csemail@thermofisher.com
Tel (800) 255-6730

International
oxid.info@thermofisher.com
Tel +44 (0) 1256 841144

Thermo
SCIENTIFIC

A Thermo Fisher Scientific Brand