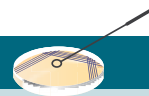


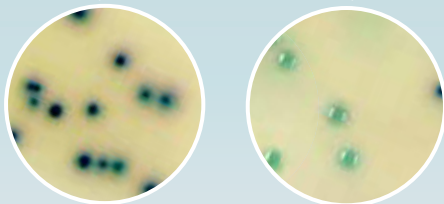
# Thermo Scientific™ Spectra™ ESBL User Guide

Presumptive identification of extended-spectrum beta-lactamase (ESBL)-producing organisms

Inoculate plate. Incubate at 35°C for 18-24 hrs. Read results.



Positive\*



*E. coli*, *Klebsiella pneumoniae* or *Klebsiella oxytoca*:  
Blue-turquoise-green colonies

Non-target Organisms\*\*



*Pseudomonas* spp.: Cream or naturally pigmented e.g. green/brown

*Enterobacter*, *Serratia*, *Citrobacter*: Green colonies

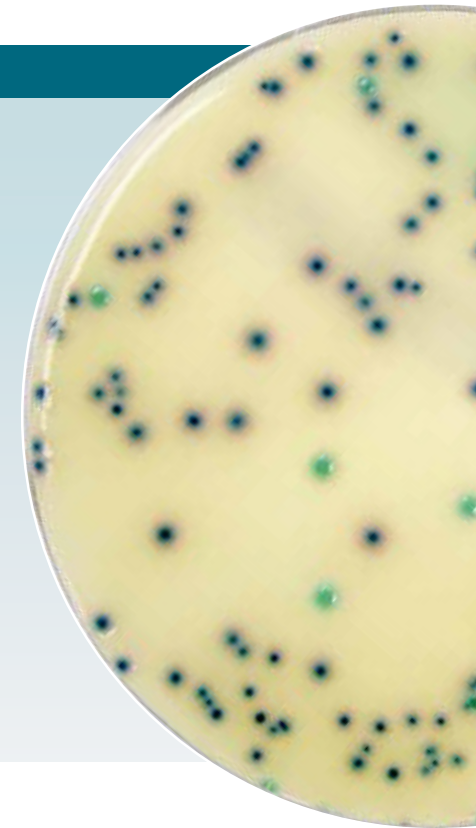


$\beta$ -galactosidase-negative  
*E. coli*: Pink colonies

*Proteus mirabilis*:  
Tan with brown halo



*Acinetobacter* spp.: Cream colonies, same as non-pigmented *Pseudomonas* spp.



\*Bacteria with other resistance mechanisms may also produce growth. Any such isolate may be clinically significant and should be investigated further.

\*\*Non-ESBL-producing organisms

Prevention saves lives, saves time, saves money.

Find out more at [thermofisher.com/preparedmedia](http://thermofisher.com/preparedmedia)