

## Install a Sampling Accessory

The Nicolet™ Summit Spectrometer accommodates a wide variety of sampling accessories, including integrated accessories and those that require additional adapters.

Integrated accessories and baseplates are easy to install and remove and are recognized automatically by OMNIC Paradigm software.

### Installing Integrated Accessories

Integrated accessories such as the Thermo Scientific™ Everest™ ATR Accessory fit over two alignment pins on the spectrometer baseplate and are held in place by magnets.



1. Pins
2. Magnets

❖ **To install an integrated accessory**

1. Hold the accessory by the front and rear handles and lower it into the spectrometer sample compartment. Magnets hold the accessory in place.



2. If you are purging your instrument, attach the purge line labeled “To accessory” to the purge inlet on the back of the accessory. See [Install a Purge Kit](#) for more information.



1. Purge inlet

**Note** To remove an accessory, disconnect the purge line if necessary and then grasp the accessory by the handles and lift it up. When not using an accessory, store it in a dust-free environment, such as a cabinet or box.

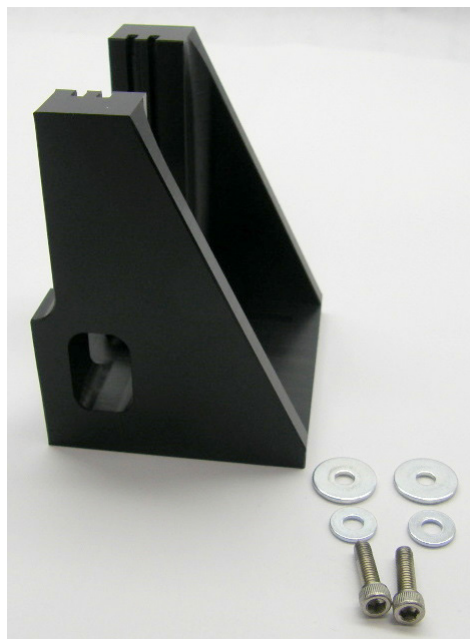
## Installing Baseplate-mounted Accessories

The iD Base Adapter accommodates a wide variety of accessories for FTIR sampling, including large transmission accessories and other specialized accessories.



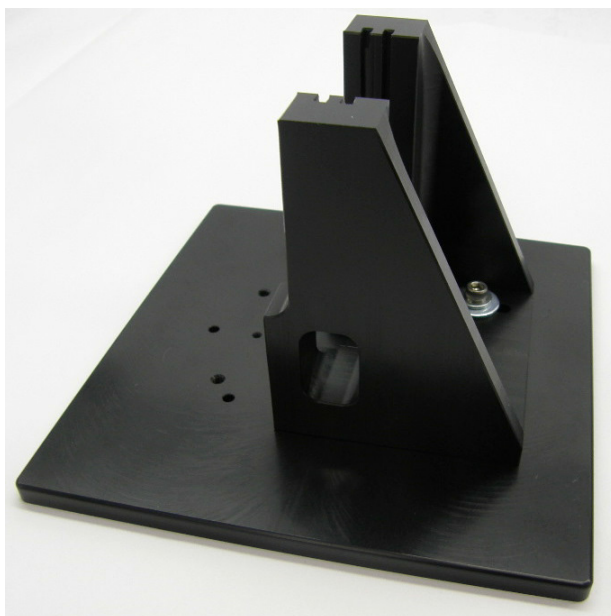
**Note** Avoid installing the iD Base Adapter without an attached accessory. Very strong magnets hold the adapter in place; you may need to use a tool to pry it free.

For slide-mounted accessories that are too big for the iD1 Transmission Accessory, a slide mount that fits the iD base is available.



The iD Base Adapter has two sets of screw holes so the slide mount can be installed facing either direction. To install the slide mount, position it over the screw holes, and then insert and tighten the two washers and screws.

Use the height adjustment screw to raise or lower a sample or accessory to align it in the infrared beam.



❖ **To install an accessory using the iD Base Adapter**

1. Attach the accessory to the iD Base Adapter.
2. Place the iD Base Adapter on the two pins in the spectrometer baseplate. Strong magnets hold the adapter and accessory in place.

## Installing Slide-mounted Accessories

The iD1 Transmission accessory is designed to accommodate gas or liquid transmission cells and thin film or pellet holders that have a 2" X 3" slide mount.



### ❖ To install a slide-mounted accessory

1. Slide the accessory into one pair of slots in the iD1 Transmission Accessory.

## Install a Sampling Accessory

Choose a pair of slots that will place the center of the accessory at the beam focus (designated by arrow heads on the accessory housing).



© 2019 Thermo Fisher Scientific Inc. All rights reserved.

Microsoft and Windows are either trademarks or registered trademarks of Microsoft Corporation in the United States and/or other countries. All other trademarks are the property of Thermo Fisher Scientific Inc. and its subsidiaries.

269-334400\_Revision A