

## About Workflows

You can use the workflow features in OMNIC Paradigm software to automate important procedures and frequent tasks. A workflow is a series of software operations that can be initiated with the click of a button. The software operations are represented by tiles, which you drag and drop onto the workflow canvas in OMNIC Paradigm software. You can specify settings for data collection, provide instructions for operators, and define data processing, reporting, and archiving in advance. Once a workflow has been created, operators can use it repeatedly to complete the steps the same way every time.

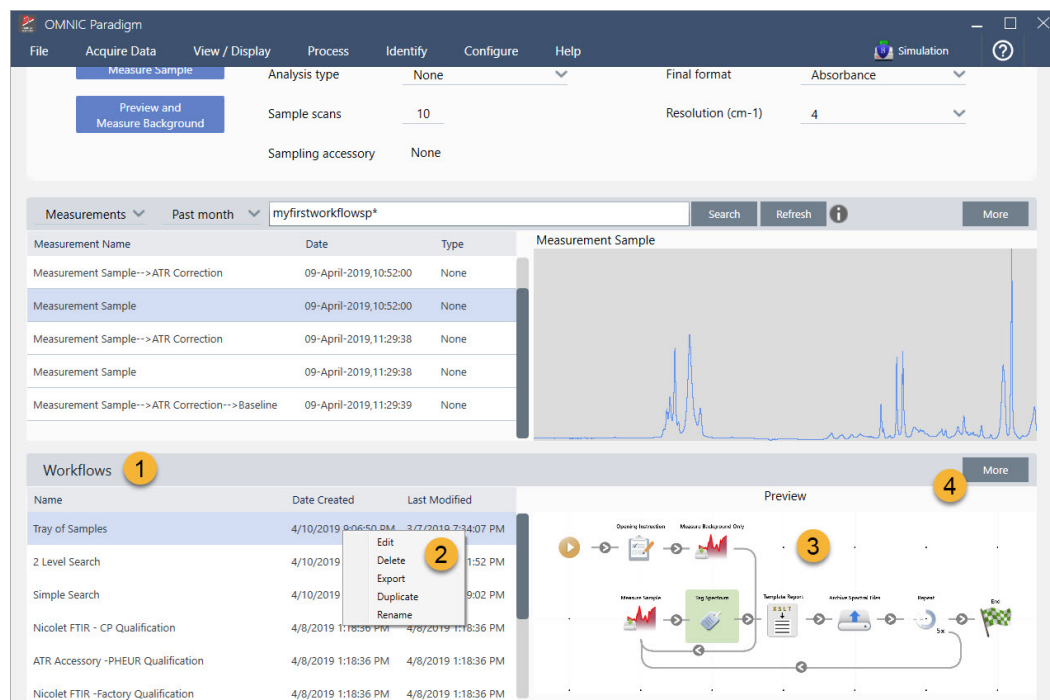
This article provides an overview of these basic workflow features and tools:

- Workflow pane
- Play Workflow window
- Workflow editor

## Workflow Pane

The workflow pane is always available at the bottom of the OMNIC Paradigm dashboard. Use this space to preview and play workflows you've created, and to open the workflow editor to edit or create a new workflow.

**Figure 1.** Workflow Pane on the OMNIC Paradigm Dashboard



1. Most recent workflows (click once to preview a workflow; click twice to play it)
2. Right-click a workflow for more options
3. Preview of selected workflow
4. Enlarge or reduce the Workflows pane

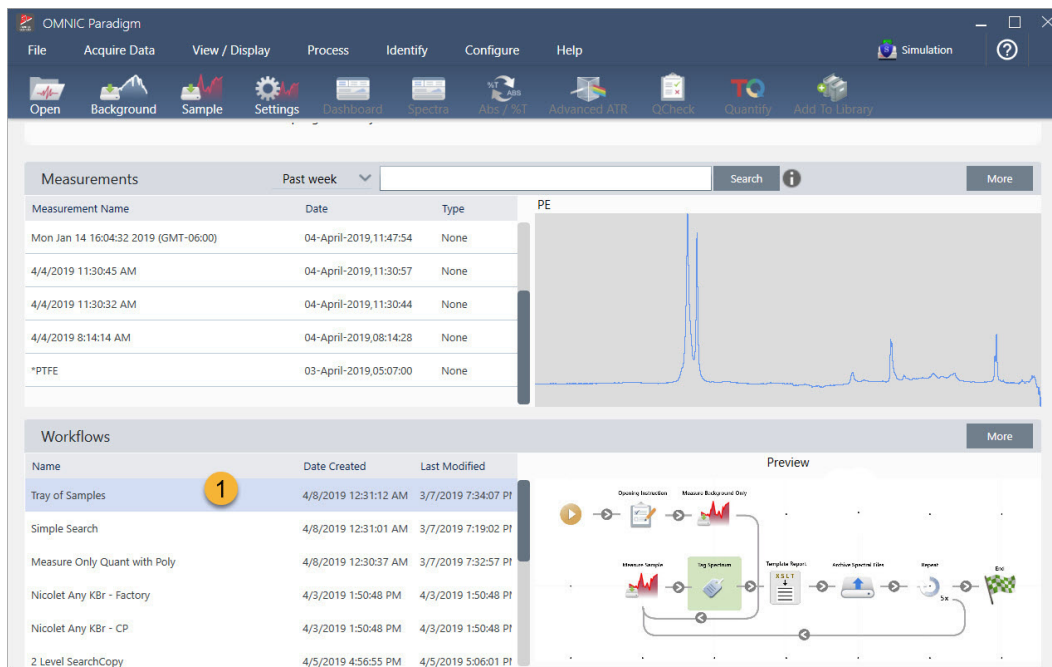
**Table 1.** Work with existing workflows from the workflow pane

To do this...	Take this action
Select and preview a workflow	Click once on the workflow name
Test or run a workflow	Double-click the workflow name. This opens the Play Workflow window where you can step through the workflow tasks.
Edit, rename, duplicate, delete or export the selected workflow	Right-click the workflow and choose an option from the shortcut menu.

## Play Workflow Window

Use the Play Workflow window to test or run a workflow. To open the Play Workflow window, double-click a workflow name in the Workflows list on the dashboard.

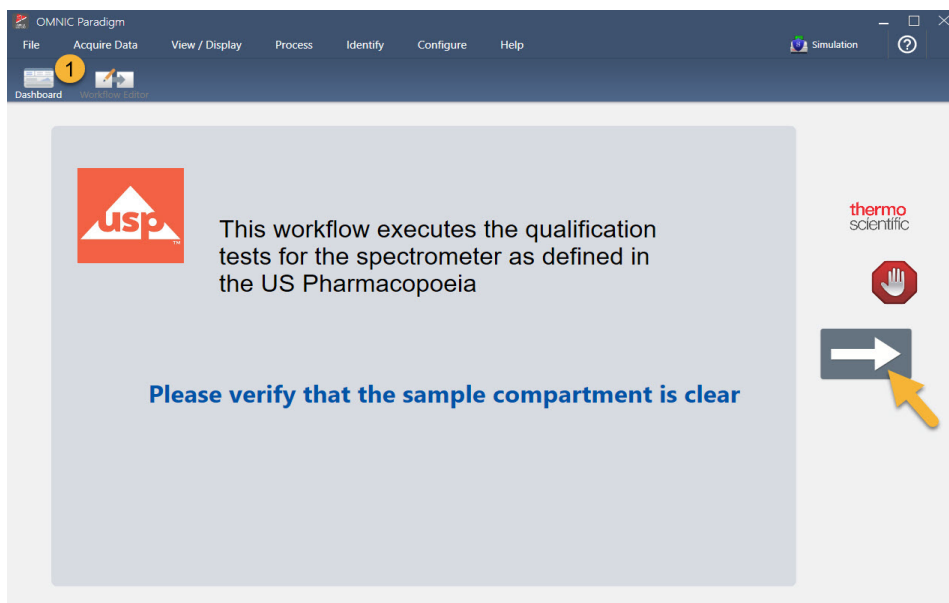
**Figure 2.** Double-click a Workflow Name to Run the Workflow



1. Selected workflow (double-click to open and run this workflow)

From the Play Workflow window, use the arrow button to move to the next task in the workflow. The workflow will play exactly as it has been designed, with tasks and operator messages displayed as indicated by the workflow.

**Figure 3.** Play Workflow Window



1. Toolbar

To stop the workflow and return to the dashboard, click the Stop button in the Play Workflow window. (If the workflow doesn't have a Stop button, click the Dashboard button on the toolbar to stop the workflow.)

## Workflow Editor

The workflow editor contains all the tools for creating workflows, including the workflow menu, toolbar, tile selection bar, and canvas. To open the workflow editor, right-click a workflow name on the dashboard and choose **Edit** from the shortcut menu.

You can also open the workflow editor from the OMNIC Paradigm main window by choosing:

**File (menu) > Workflows > Create Workflow**

The workflow canvas is where you select and set up the tasks you want the workflow to perform and join tasks together to create the workflow. The workflow editor opens with the mandatory “Workflow Start” and “Workflow End” tiles displayed on the canvas. Available settings for each tile in the current workflow are in the expandable sections below the canvas. Tools for scrolling, zooming and resetting the canvas view are at the right. A handy toolbar is above the canvas.

**Figure 4.** Workflow Editor



- |                       |  |
|-----------------------|--|
| 1. Toolbar            | 5. Tools to adjust and reset the canvas view |
| 2. Tile selection bar | 6. Start tile                                |
| 3. Canvas             | 7. End tile                                  |
| 4. Tile settings      |  |

Each task is represented by a colorful tile in the tile selection bar. Here are some commonly used examples:



Tools for creating, opening, and exporting workflows are located in the Workflow submenu (available from the OMNIC Paradigm File menu). Example workflows, available [here](#), are a good place to start, or you can create a workflow from a spectrum's history. See [“Create and Run Your First Workflow”](#) for details.

Tiles can be added, moved, copied and deleted to create the desired workflow. For more information, see the article titled “[Edit a Workflow](#).”