

OMNIC Paradigm Software Options

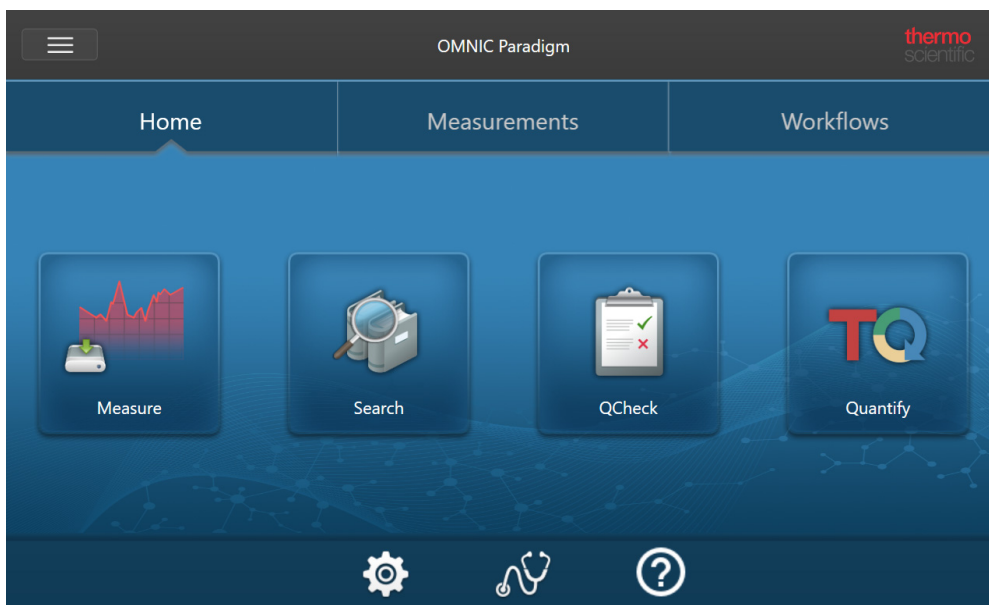
OMNIC Paradigm software features three interfaces to suit your device or task and pairs with other Thermo Scientific software, allowing you to develop and run quantification methods or protect and audit your data.

OMNIC Paradigm Software Interfaces

Switch anytime between OMNIC Paradigm software's touchscreen and desktop interfaces to best suit your device and goals.

Touchscreen Interface

Figure 1. The touchscreen interface features a simplified interface for streamlined analysis.

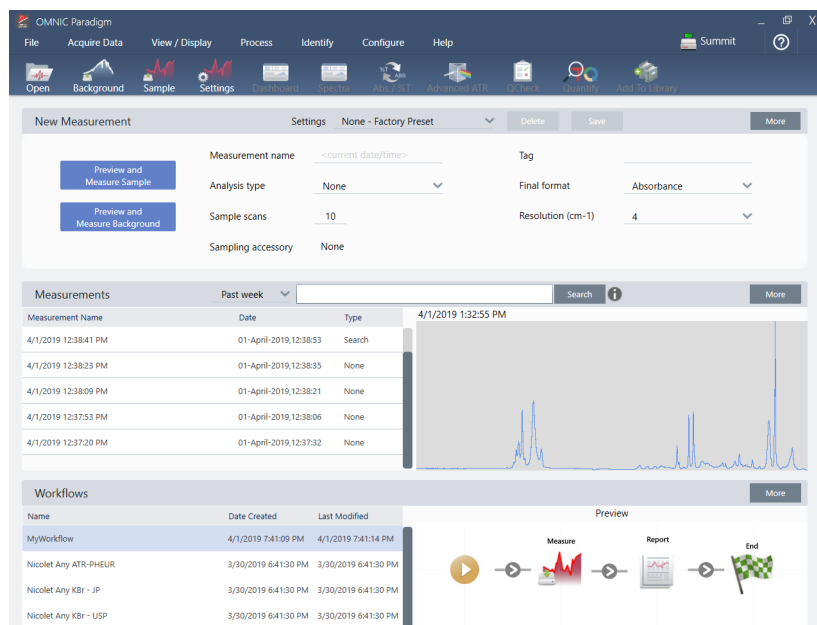


The touchscreen interface is optimized for small screens, such as the Thermo Scientific[™] Nicolet[™] Summit spectrometer's optional touchscreen device.

Use the touchscreen interface for measuring and analyzing samples or running workflows in a streamlined, simplified interface.

Desktop Interface

Figure 2. The desktop interface includes a wider range of features and tools for more complex measurements and analyses.



Use the desktop interface when working from a larger screen and when you need additional features not available in the touchscreen interface, such as the workflow editor and select spectral processing and analysis tools.

Connect your Summit spectrometer to an external monitor and a USB mouse and keyboard for the best experience using the desktop interface.

Switching Between Interfaces

Although desktop and touchscreen software are optimized for different tasks and devices, you can switch between interfaces at any time.

❖ To switch between the touchscreen and desktop interfaces

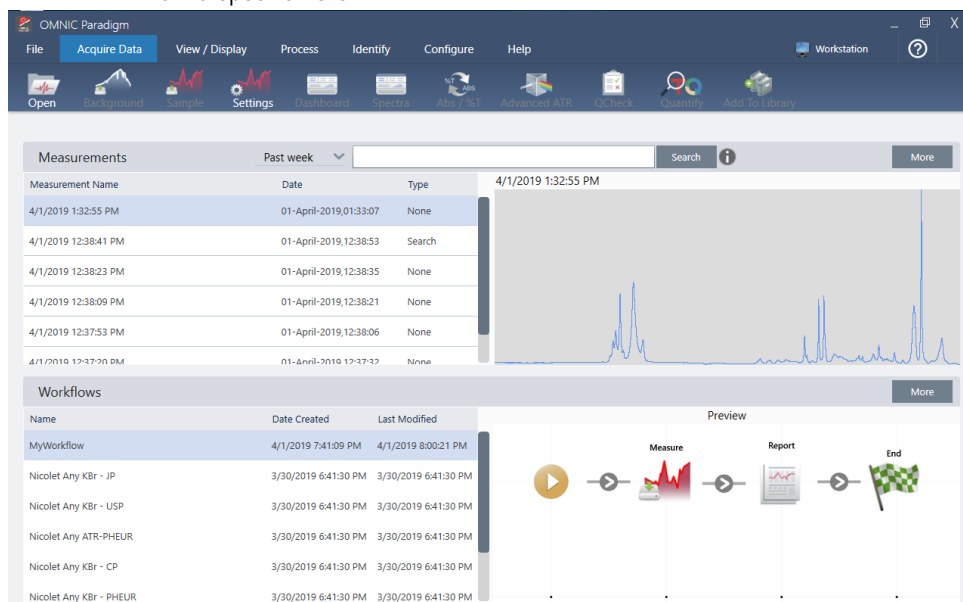
- To switch from desktop to touchscreen, select **View / Display > Switch to Touchscreen**. The software will close briefly and re-open with the touchscreen interface.
- To switch from touchscreen to desktop, from the home screen, select **Switch to Desktop** from the menu. The software will close briefly and re-open with the desktop interface.

Pairing OMNIC Paradigm with Other Thermo Scientific Software

OMNIC Paradigm software is compatible with other Thermo Scientific software for added flexibility and for quantitative analysis and data security.

OMNIC Paradigm Workstation software

Figure 3. Workstation software lets you analyze spectra or develop workflows while you're away from a spectrometer



When working from a separate computer and not connected to an instrument, use Workstation software to analyze previously collected data, create workflows for later use, or create and share reports.

Quantitative Analysis Software

Pair OMNIC Paradigm software with TQ Analyst™ software to develop and run quantitative analysis methods that you can use in OMNIC Paradigm software.

- TQ Analyst EZ Edition
- TQ Analyst Professional Edition

See “[TQ Analyst™ Pro Edition Software](#)” on thermofisher.com for details.

Data Security Software

Use Thermo Scientific™ OMNIC™ Security Suite Software to ensure your data's security and integrity. The Security Suite software ensures 21CFR Part 11 compliance and includes the following:

- Security Administration for controlling system access, handling security policies, and setting digital signatures for responsibility and data integrity

- Audit Manager for creating and managing complete audit trails
- Thermo Software IQ tool to verify your security installation

See “[OMNIC™ DS Data Security Software](#)” for more on securing your data with Security Suite software.

© 2019 Thermo Fisher Scientific Inc. All rights reserved.

Microsoft and Windows are either trademarks or registered trademarks of Microsoft Corporation in the United States and/or other countries. All other trademarks are the property of Thermo Fisher Scientific Inc. and its subsidiaries.

269-335800_Revision A