

Welcome to OMNIC Paradigm Software

Thermo Scientific™ OMNIC™ Paradigm software for desktop and touchscreen is an advanced software package for FTIR spectroscopy, designed to simplify how you acquire, process, and interpret data and to help you work remotely and collaborate with colleagues around the globe.

Manage New and Recent Work from the Dashboard

The screenshot displays the OMNIC Paradigm software interface. At the top is a menu bar with options: File, Acquire Data, View / Display, Process, Identify, Configure, Help, and a Summit button. Below the menu is a toolbar with icons for Open, Background, Sample, Settings, and others. The main area is divided into three sections:

- New Measurement:** A form for setting up a new measurement. Fields include Measurement name (set to <current date/time>), Tag, Analysis type (set to None), Final format (set to Absorbance), Sample scans (set to 10), Resolution (cm-1) (set to 4), and Sampling accessory (set to None). Buttons for 'Preview and Measure Sample' and 'Preview and Measure Background' are visible.
- Measurements:** A table listing recent measurements with columns for Measurement Name, Date, and Type. A search bar and a 'Past week' filter are present. A preview of a spectrum is shown on the right.
- Workflows:** A table listing workflows with columns for Name, Date Created, and Last Modified. A 'Preview' section shows a workflow diagram with steps: Measure, Report, and End.

With the new dashboard in OMNIC Paradigm software, you can set and save your measurement settings, measure a new sample, resume your recent work, or run an automated workflow all from the same, convenient screen.

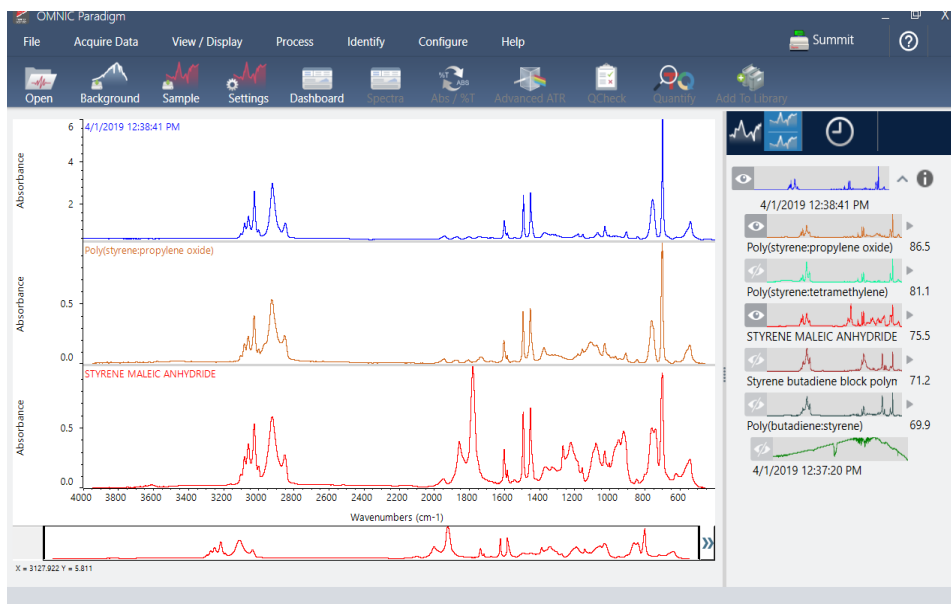
In Paradigm for touchscreen, the home screen provides many of these same tools and features in an even more streamlined, intuitive interface so operators can focus on their work and on the tools they need.

Learn More

- [Measurement Settings](#)

- [Measure a Sample](#)
- [Create and Run Your First Workflow](#)

Process, Analyze, and Explore Spectra in the Spectral View



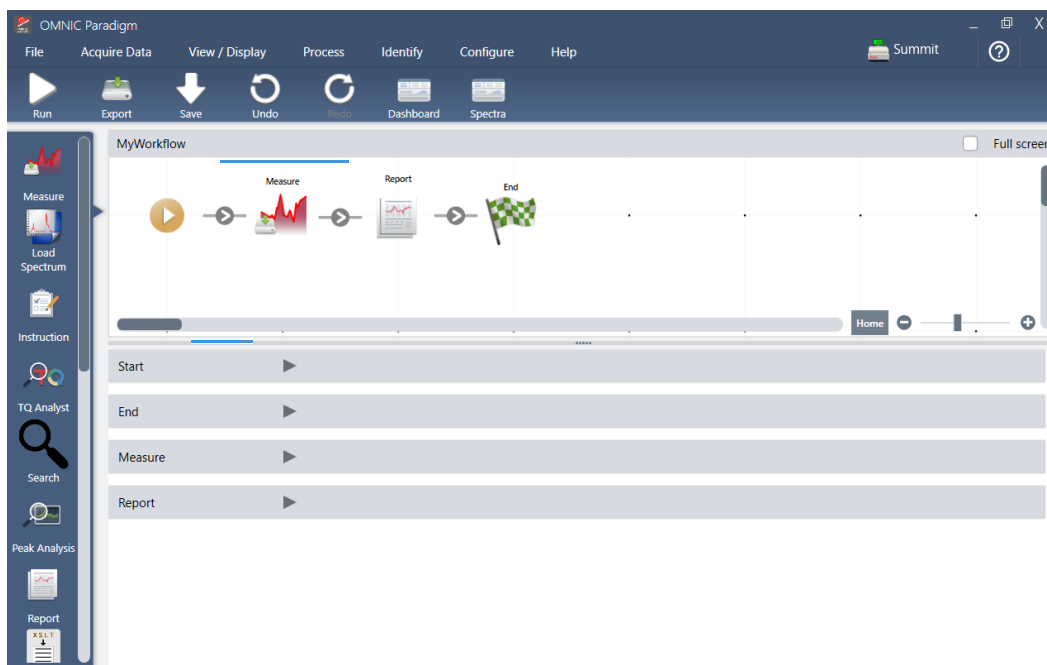
Use the spectral view to process, analyze, or explore your data in depth. Here you can process your data, find and label peaks, and optimize the view so you can more easily compare or analyze spectra.

The results pane allows you to quickly add or remove a spectrum from the main view, explore details of each spectra, or review the change history of your selected spectrum.

Learn More

- [Identify an Unknown Sample with ATR](#)
- [Verify Sample Composition](#)

Automate Repetitive Tasks with Workflows



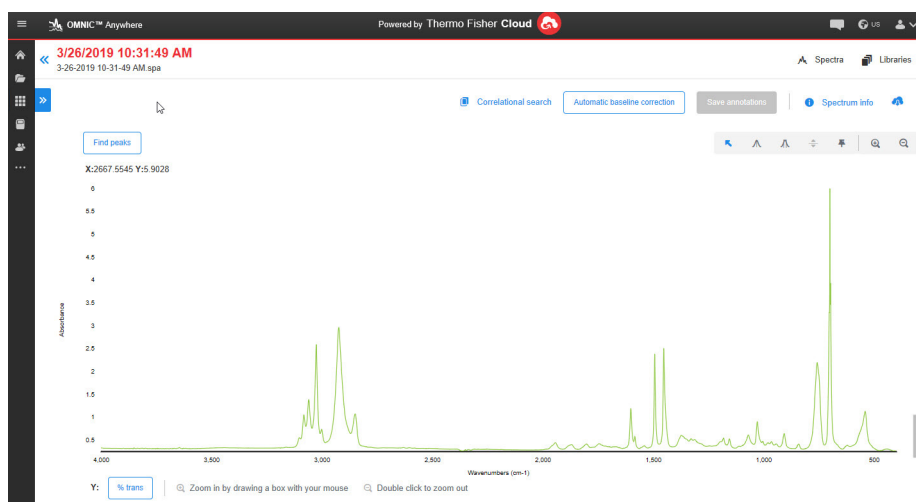
Automate your tasks with a workflow to ensure that measurements are collected and processed in exactly the same way each time. Edit or create a workflow by simply dragging and dropping tiles in the workflow editor, and then run the workflow at the click of a button.

Operators using Paradigm for touchscreen can import and run one of our factory installed performance tests or a custom workflow right from the home screen.

Learn More

- [Create and Run Your First Workflow](#)
- [Edit a Workflow](#)
- [Workflow Tiles](#)

Share Your Work Remotely



Upload your data to the cloud and use OMNIC Anywhere to view, analyze or share your data using any connected PC, Apple computer, Android or iOS device.

With a Nicolet™ Summit™ spectrometer and a free Connect account, measure samples in the classroom or lab, upload the data to your Connect account, and view, explore, or share the data on another device in your dorm or workspace.

Learn More

- [View Your Data with the OMNIC Anywhere App](#)

© 2019 Thermo Fisher Scientific Inc. All rights reserved.

Microsoft and Windows are either trademarks or registered trademarks of Microsoft Corporation in the United States and/or other countries. All other trademarks are the property of Thermo Fisher Scientific Inc. and its subsidiaries.

269-335800_Revision A