

Thermo Scientific Process 11 Parallel Twin-screw Extruder

Small, Simple, Scalable

Starting with as little as 20 g/h of material, the new Thermo Scientific™ Process 11 Twin-screw Extruder is designed to meet the key challenges faced by research and development formulation scientists.

Versatile setup

The Thermo Scientific™ Process 11 Parallel Twin-screw Extruder includes several setup possibilities: multiple split feeding and venting ports, a die design for quick changes of the strand diameter, and eight barrel segments (length: 5 L/D) for accurate temperature profiles.

We offer a complete compounding line including feeding solutions and downstream equipment such as water baths, conveyor belt, variable length pelletizers, melt pump, 3D filament spooler or sheet take off.

As a workflow solution, the Thermo Scientific™ HAAKE™ MiniJet Pro Molding System can be used to shape the compounded materials into test specimens for further testing of mechanical or optical properties.



Flexible design

The instrument's segmented screw design allows adapting the processing conditions to simulate various compounding applications. Due to the constant processing geometry within the Thermo Scientific™ extruder portfolio, knowledge obtained from the lab trials using the Process 11 Extruder can directly be transferred to pilot or production scale equipment. This scale-up transfer is based on the specific energy introduced into the material. Figure 1 displays the residence time distributions for trials run using a Process 11 Extruder with 1 kg/h (orange) and a 16 mm diameter extruder (blue). Achieving equal specific energy levels leads to an almost perfect match for the material's residence time within the extruder.

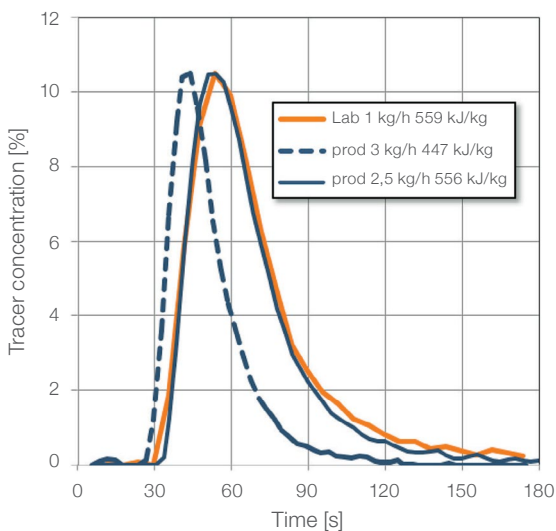


Figure 1: Residence time distribution.

Applications

- Polymer research & development
- Nano compound processing
- Food research & development

Key benefits:

Small

- The only real bench-top compounder available on the market (no hidden electric cabinet) maximizes the usage of the available lab space.
- Minimized material usage. Throughput rates of 20 g/h to 2.5 kg/h with realistic processing conditions.

Simple

- Easy-to-operate by intuitive touch screen control.
- Integrated feeder control.
- Easy cleaning due to clam-shell barrel design with removable top half barrel.

Scalable

- Direct scalable processing conditions, due to portfolio wide similar screw geometry.
- Transfers knowledge obtained in the lab to pilot and production scale processes.
- Segmented screw design with common screw element types.

Technical data

Barrel diameter	11 mm
Barrel length	40 L/D
Barrel material	Nitriding steel 1.7365 (EN40B)
Screw speed	10...1000 rpm
Torque per shaft	6 Nm, constant torque, safety monitored
Pressure	100 bar, safety monitored
Temperature	RT...350 °C (optional 450 °C)
Feed zone	Permanently water cooled
Heating zones	7 x 5 L/D electrical heated (optional water cooled)
Dimensions	820 x 480 x 410 mm (L x W x H)
Weight	55 kg
Power supply	230 V, 16 A, 50/60 Hz

Selected options

567-7602	High temperature option up to 450 °C especially for high performance polymers
567-7604	Controlled liquid cooling for the barrel for low temperature applications
567-7606	Fully ported barrel allows maximum flexibility for split feeding and venting
567-7635	Screw length adjustment kit, allows reducing the extruder's processing length in 5 L/D steps
567-7623	Vacuum venting stack

Selected accessories

567-7680	Thermo Scientific™ Process 11 Melt Pump for pulsation-free metering
567-7688	Filament Spooler for winding 3D filaments
567-7672	Thermo Scientific™ VariCut Pelletizer with variable pellet sizing
567-7675	Thermo Scientific™ Sheet Take-off System



Easy cleaning due to clam-shell barrel design with removable top-half barrel.

Find out more at thermofisher.com/process11

ThermoFisher
SCIENTIFIC