

# Connected Care Portal

## Information at your fingertips

The **Connected Care Portal** from Thermo Fisher Scientific delivers the insights and knowledge you need to effectively manage your system and workflow. The secure, on-demand information in the Connected Care Portal will help you:



- **Assess** the performance of your instrument across multiple parameters
- **Analyze** system performance over time
- **Track** system health and support activities
- **Quickly locate** reports and other documents

The Connected Care portal runs in the Thermo Fisher Cloud environment and can be easily accessed anytime through a web browser. Within the Connected Care portal, you will find numerous views and aggregated data sets that will facilitate better system performance and turnkey maintenance and support.

Secure  
connection

On-demand  
information

Actionable  
insights

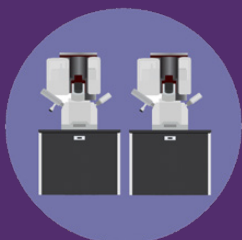
Easy and  
convenient

## Key features of the Connected Care Portal



### System overview

Provides on-demand insights into your system's productivity and utilization. Shows current system state, indications of system health, and microscope service history.



### Multiple system views

Compare the performance of multiple system or groups, or review a defined group of systems to identify improvement opportunities.



### Service and support overview

Provides an overview of dates of service agreement coverage, status of service calls, and the balance of remaining support or applications resources.



### Document repository

Provides stored fleet reports, enablement plans, site survey reports, and more.

Thermo Fisher Scientific's **Connected Care Portal** is available through our **Accelerate** and **Advance** service portfolios.

Find out more at

[thermofisher.com/emserviceandsupport](https://thermofisher.com/emserviceandsupport)

**ThermoFisher**  
SCIENTIFIC