

FlowPRA Screening Test

Key benefits

- **Easy**—quick and simple one-tube method to detect anti-HLA antibodies
- **Powerful**—screens Class I and Class II antibodies separately or simultaneously
- **Accurate**—eliminates false-positive reactions due to non-HLA antibodies and autoantibodies
- **Convenient**—no frozen lymphocyte panels to maintain and no cell viability issues
- **Flexible**—works with most commercial flow cytometers
- **Comprehensive**—panel coverage equivalent to 30 different lymphocytes
- **Informative analysis**—can determine percent PRA of HLA Class I and Class II simultaneously
- **Reproducible**—consistent results each and every time
- **Sensitive**—more sensitive than CDC-AHG
- **Economical**—minimal shipping and storage costs



Fast and clear test results

One Lambda™ FlowPRA™ Class I and Class II screening tests each consist of a pool of 30 different bead preparations. Each bead is coated with HLA Class I or Class II antigens purified from one of 30 cell lines. All common HLA antigens, as well as many rare HLA antigens, are represented in the pool.

Class I and Class II beads are distinguishable on a flow cytometer by their different fluorescent properties. There is no cross reactivity between Class I and Class II beads, so they can be mixed to detect Class I and Class II antibodies simultaneously.

After incubation of serum with FlowPRA beads, followed by staining with a FITC-labeled anti-human IgG antibody, the anti-HLA IgG positive serum shows a fluorescent channel shift as compared with the negative serum. Percent PRA is represented by the percentage of beads that react positively with the serum.

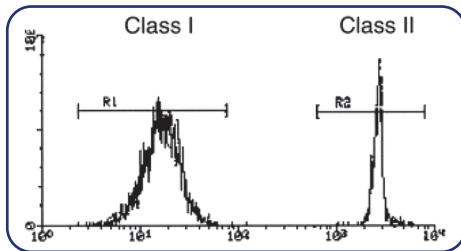
One Lambda™ FlowPRA™ Control Beads allow you to determine the background level of your test serum when using FlowPRA Specific or Screening Tests.

FlowPRA Screening Test

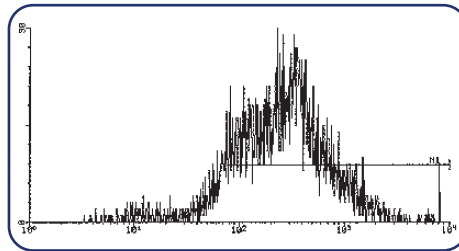
Principle

The FlowPRA Screening Test provides precalibrated reagents for rapid flow cytometric detection of PRA in human sera. Reactivity of the FlowPRA beads has been confirmed by flow cytometry using human allosera and specific monoclonal samples for the detection of HLA antibodies.

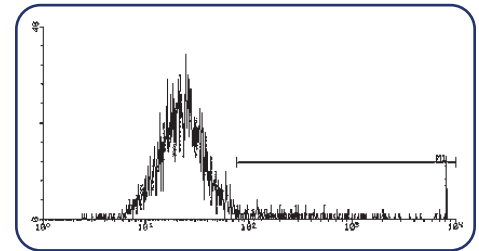
Representative results from a FlowPRA Screening Test



FL2 histogram differentiating Class I and Class II beads



FL1 histogram of FlowPRA beads reacting with positive control serum



FL1 histogram of FlowPRA beads reacting with negative control serum

Ordering information

Product	Quantity	Cat. No.
For <i>In Vitro</i> Diagnostic Use. (Unless otherwise stated.)		
FlowPRA Class I Screening Test	50 tests	FL1-30
FlowPRA Class II Screening Test	50 tests	FL2-30
FlowPRA Class I & II Screening Test	50 tests	FL12-60
FlowPRA Class I & II Negative Control	10 tests	FL-NC
FlowPRA Control Beads	50 tests	FLCNTBD
For General Laboratory Use.		
Adsorb Out beads	25 tests	ADSORB

Find out more at thermofisher.com/onelambda

For *In Vitro* Diagnostic Use. © 2022 Thermo Fisher Scientific Inc. All rights reserved. All trademarks are the property of Thermo Fisher Scientific and its subsidiaries unless otherwise specified. Specifications, terms and pricing are subject to change. Not all products are available in all countries. Please consult your local sales representative for details.

TDX-MKT-0002 | SEPT 2022 | Rev 03

One Lambda, Inc.
22801 Roscoe Blvd., West Hills, CA 91304 USA
TEL: 747-494-1000
FAX: 747-494-1001
(US and Canada only)
INTERNATIONAL: Contact your local distributor



ThermoFisher
SCIENTIFIC