

FlowPRA Specific and Single Antigen tests

Antibody detection tests



Key benefits

- **Easy**—both Class I and Class II tests available
- **Accurate**—HLA antibody detection with purified HLA antigens
- **Reliable**—high sensitivity and reproducibility
- **Quick**—only four reactions needed for analysis of Class I or Class II antibody profile
- **Specific**—reduces false positive reactions due to non-HLA antibodies and autoantibodies
- **Convenient**—no frozen lymphocyte panels to maintain and no cell viability problems
- **Informative**—determines the percent PRA and identifies individual HLA antibody specificities
- **Comprehensive**—additional bead groups available for rare HLA antigens
- **Flexible**—works with most commercial flow cytometers

Patent No. 5,948,627; 6,150,122; 6,514,714

Flow cytometric detection of HLA Class I and Class II antibodies

The One Lambda™ FlowPRA™ Specific Class I and Class II antibody detection tests each consist of a panel of 32 beads coated with different purified Class I or Class II antigens, respectively. The 32 different antigen beads in each test are divided into four HLA groups with eight antigen beads in each group. Also, a control bead without antigen is added to each panel. A serum sample must be tested separately with each group of beads to complete the 32 antigen bead panel analysis of the HLA Class I or Class II antibodies in that serum.

In the procedure, each group of beads is incubated separately with the test serum, followed by staining with a FITC-conjugated anti-human IgG antibody. A positive reaction shows an FL1 channel shift compared to the negative control serum. Each of the eight beads shows a different FL2 channel shift. By analyzing the FL1 versus FL2 dot plots, you can determine HLA specificity.

FlowPRA Single Antigen Test

The One Lambda™ FlowPRA™ Single Antigen test is designed to uncover hidden specificities for analysis in high-PRA sera. The test is used to screen highly sensitized patients, both pre- and post-transplant, and is useful in identifying acceptable antigens prior to a solid organ transplant or re-transplant.

Straightforward interpretation

FlowPRA Specific Class I test—group 4

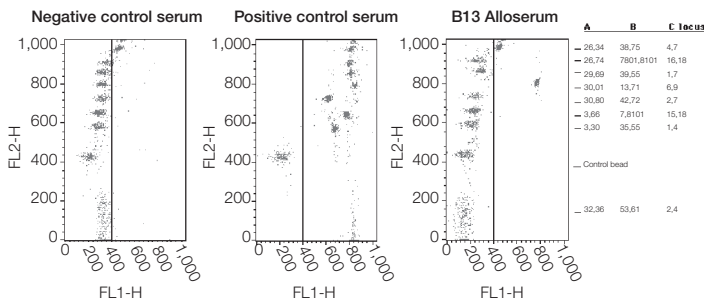


Figure 1. Sample dot plot for B13 positive alloserum. The figure depicts only one out of four groups. The actual assay results consist of four groups, plus positive and negative controls. Please consult the product insert for more information.

FlowPRA Specific Class II test—group 1

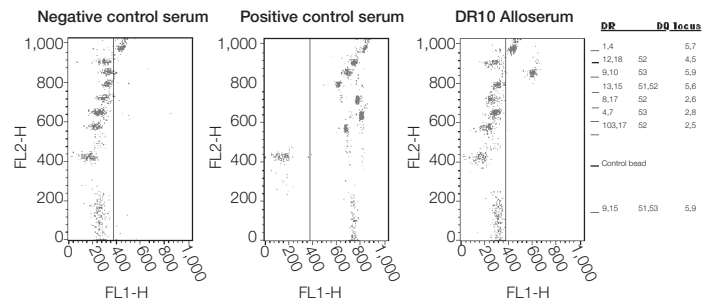


Figure 2. Sample dot plot for DR10 positive alloserum. The figure depicts only one out of four groups. The actual assay results consist of four groups, plus positive and negative controls. Please consult the product insert for more information.

Ordering information

Products	Quantity	Cat. No.
FlowPRA Specific test		
FlowPRA Specific HLA Class I Antibody Detection Test	10 tests	FL1SP
FlowPRA Specific HLA Class II Antibody Detection Test	10 tests	FL2SP
FlowPRA Single Antigen Class I test		
FlowPRA Single Antigen HLA Class I Antibody Detection Test	10 tests	FL1HD
FlowPRA Single Antigen HLA Class I - 1 Antibody Detection Test	10 tests	FL1HD01
FlowPRA Single Antigen HLA Class I - 2 Antibody Detection Test	10 tests	FL1HD02
FlowPRA Single Antigen HLA Class I - 3 Antibody Detection Test	10 tests	FL1HD03
FlowPRA Single Antigen HLA Class I - 4 Antibody Detection Test	10 tests	FL1HD04
FlowPRA Single Antigen HLA Class I Supplement - 5 Antibody Detection Test	10 tests	FL1HD05
FlowPRA Single Antigen HLA Class I Supplement - 6 Antibody Detection Test	10 tests	FL1HD06
FlowPRA Single Antigen HLA Class I Supplement - 7 Antibody Detection Test	10 tests	FL1HD07
FlowPRA Single Antigen HLA Class I Supplement - 8 Antibody Detection Test	10 tests	FL1HD08
FlowPRA Single Antigen HLA Class I Supplement - 9 Antibody Detection Test	10 tests	FL1HD09
FlowPRA Single Antigen HLA Class I Supplement - 10 Antibody Detection Test	10 tests	FL1HD010
FlowPRA Single Antigen Class II test		
FlowPRA Single Antigen HLA Class II Antibody Detection Test	10 tests	FL2HD
FlowPRA Single Antigen HLA Class II - 1 Antibody Detection Test	10 tests	FL2HD01
FlowPRA Single Antigen HLA Class II - 2 Antibody Detection Test	10 tests	FL2HD02
FlowPRA Single Antigen HLA Class II - 3 Antibody Detection Test	10 tests	FL2HD03
FlowPRA Single Antigen HLA Class II - 4 Antibody Detection Test	10 tests	FL2HD04
FlowPRA Single Antigen HLA Class II Supplement - 5 Antibody Detection Test	10 tests	FL2HD05
FlowPRA Class I Positive Control	10 tests	FL1-PC
FlowPRA Class II Positive Control	10 tests	FL2-PC
FlowPRA Negative Control	10 tests	FL-NC
FlowPRA Control Beads	50 tests	FLCNTBD
Adsorb Out beads	25 tests	ADSORB

Applicable to all FlowPRA products above, for *In Vitro* Diagnostic Use Only. European Union Only.

Applicable to Adsorb Out beads, for General Laboratory Use.

Find out more at thermofisher.com/onelambda

Intended use of the products mentioned in this document varies. For specific intended use statements, please refer to the Instructions for Use (IFU). © 2022 Thermo Fisher Scientific Inc. All rights reserved. All trademarks are the property of Thermo Fisher Scientific and its subsidiaries unless otherwise specified. Specifications, terms, and pricing are subject to change. Not all products are available in all countries. Please consult your local sales representative for details. TDX-MKT-0044 | SEPT 2022 | REV 03

One Lambda, Inc.
22801 Roscoe Blvd., West Hills, CA 91304 U.S.A.
TEL: 747-494-1000
FAX: 747-494-1001
(U.S. and Canada Only)
INTERNATIONAL: Contact your local distributor

